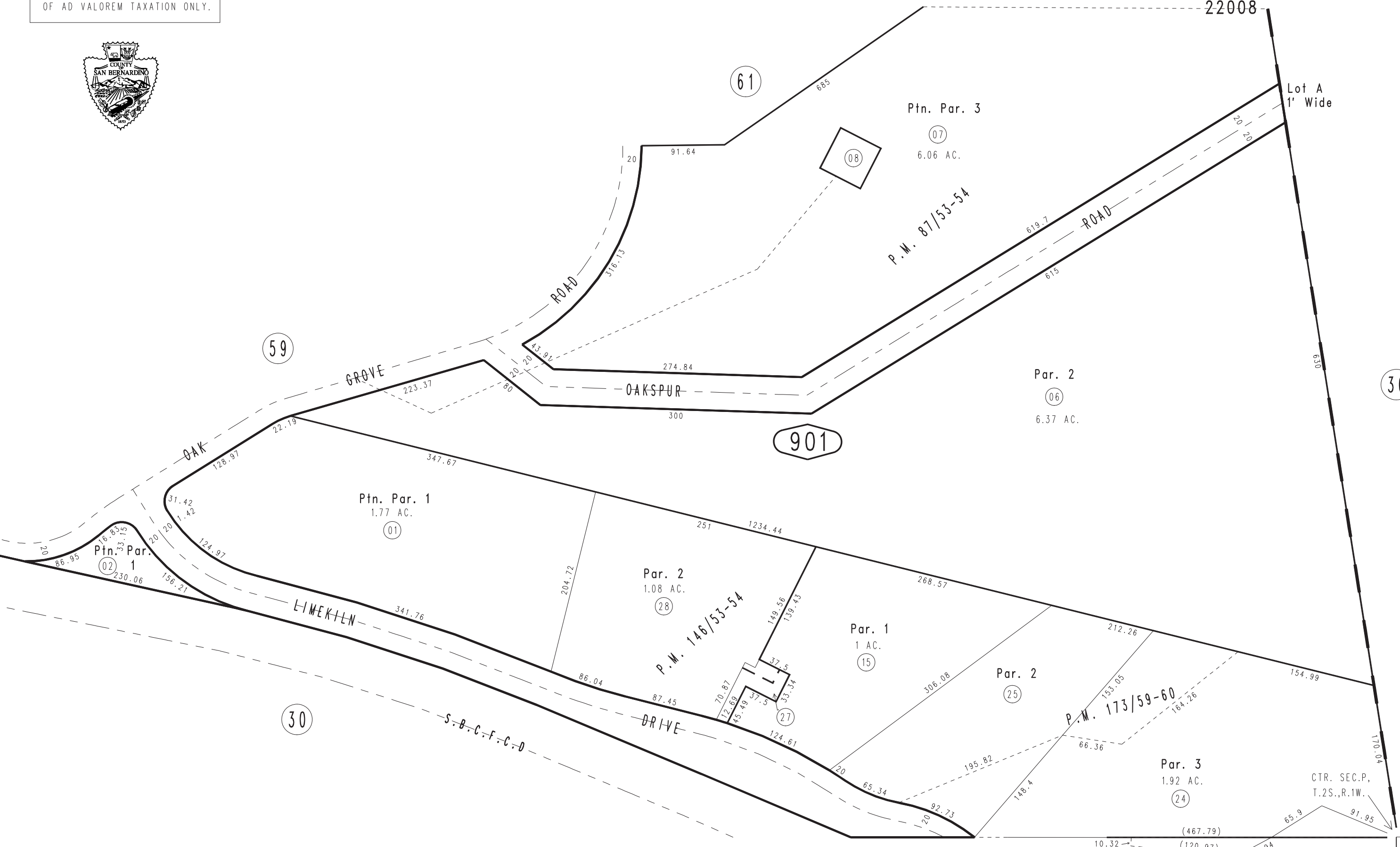
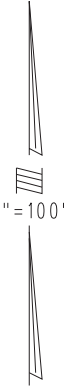


THIS MAP IS FOR THE PURPOSE
OF AD VALOREM TAXATION ONLY.



Ptn. N.W.1/4 Sec.9, T.2S.,R.1W., S.B.B.&M.

City of Yucaipa
Tax Rate Area 0322-90
22008



Parcel Map No. 14217, P.M. 173/59-60
Ptn. Parcel Map No. 12209, P.M. 146/53-54
Ptn. Parcel Map No. 7802, P.M. 87/53-54

February 2005

Assessor's Map
Book 0322 Page 90
San Bernardino County

REVISED
02/05/20 KA
03/29/21 KA