

THIS MAP IS FOR THE PURPOSE OF AD VALOREM TAXATION ONLY.

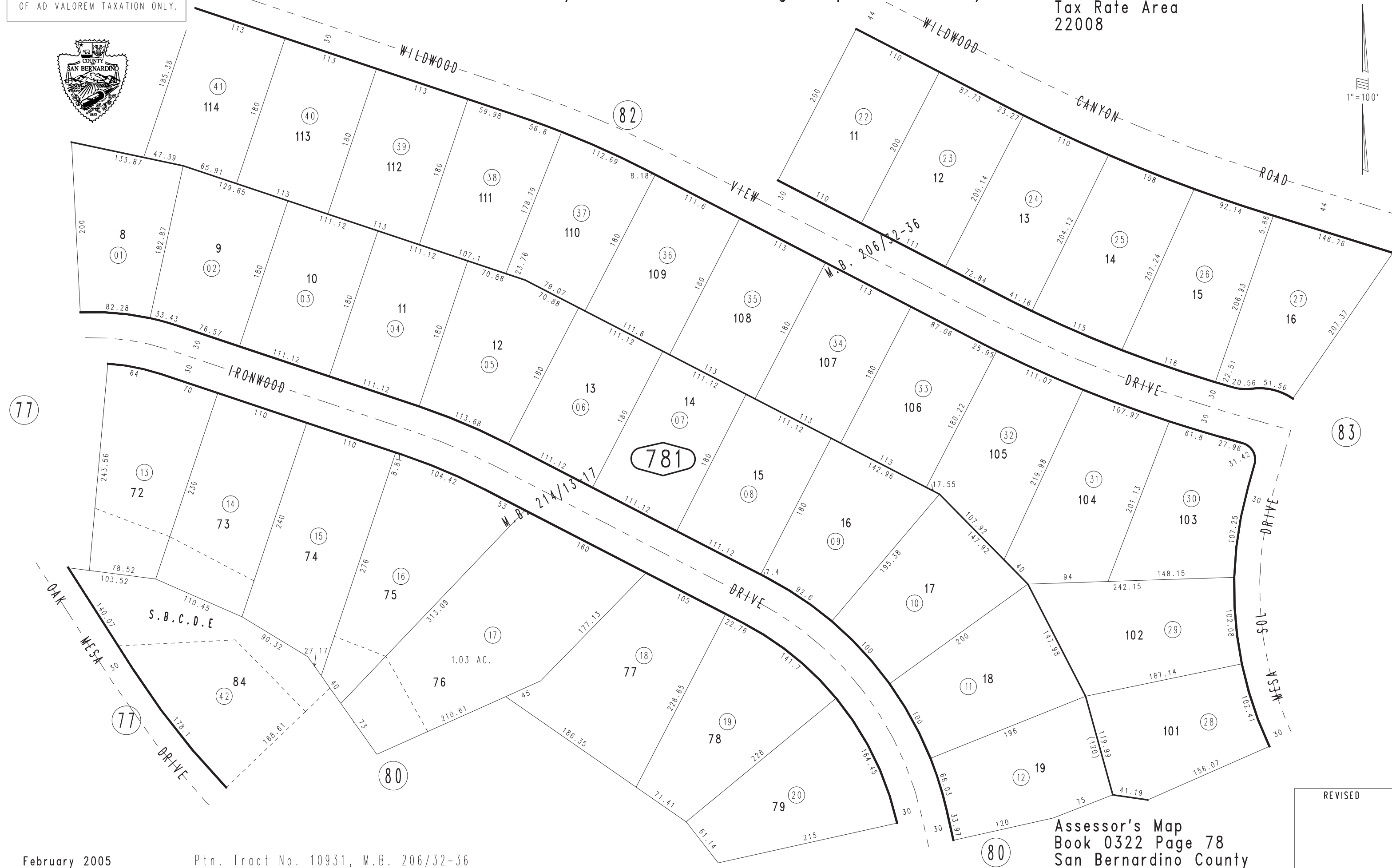


Ptn Tract No. 10777, M.B. 179/58-62, Amending Map, M.B. 214/13-17

City of Yucaipa
Tax Rate Area
22008

0322-78

1"=100'



February 2005

Ptn. Tract No. 10931, M.B. 206/32-36

Assessor's Map
Book 0322 Page 78
San Bernardino County

REVISED