

THIS MAP IS FOR THE PURPOSE OF AD VALOREM TAXATION ONLY.

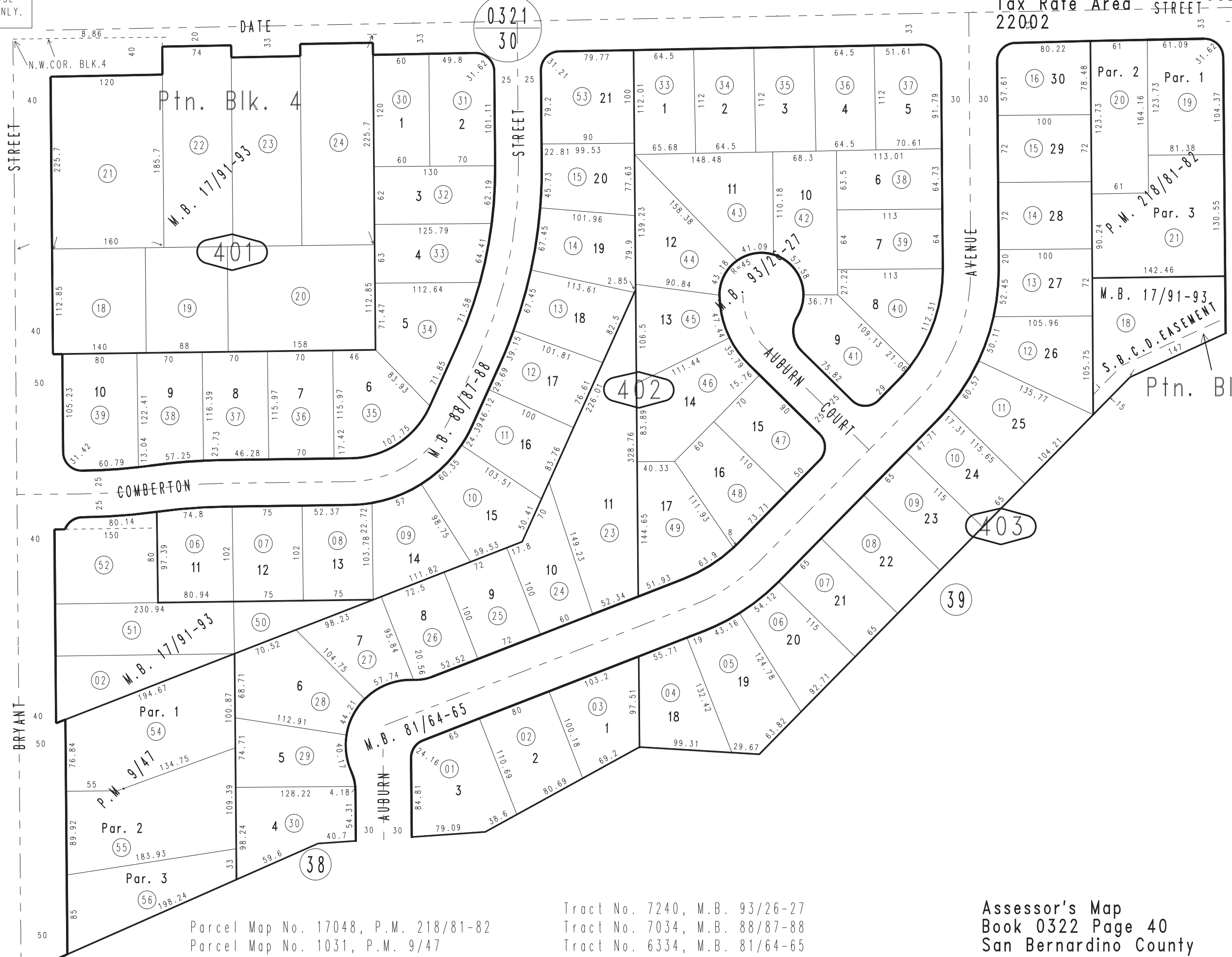


# Ptn. Revised Map of Yucaipa City, M.B. 17/91-93

City of Yucaipa  
Tax Rate Area - STREET - 0322-40  
22002

N.E. COR. BLK. 3

1"=100'



Parcel Map No. 17048, P.M. 218/81-82  
Parcel Map No. 1031, P.M. 9/47

Tract No. 7240, M.B. 93/26-27  
Tract No. 7034, M.B. 88/87-88  
Tract No. 6334, M.B. 81/64-65

Assessor's Map  
Book 0322 Page 40  
San Bernardino County

REVISED  
03/24/07 RU  
07/14/09 GL