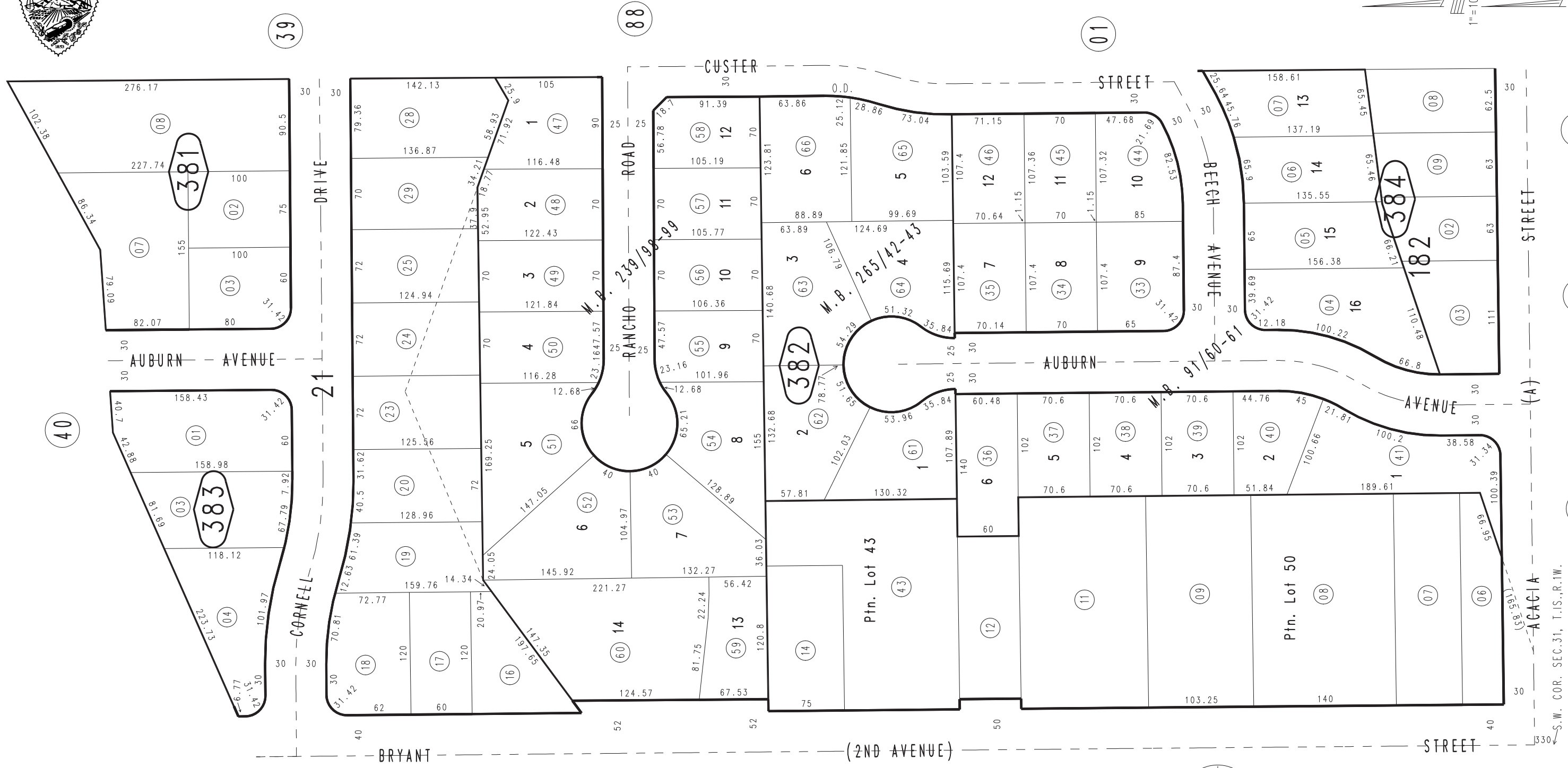


THIS MAP IS FOR THE PURPOSE OF AD VALOREM TAXATION ONLY.

Ptn. Revised Map of Yucaipa City, M.B. 17/91-93

City of Yucaipa
Tax Rate Area
22002

0322-38



0303
23

0303
27

February 2005

Tract No. 13970, M.B. 265/42-43
Tract No. 14195, M.B. 239/98-99
Tract No. 7126, M.B. 91/60-61

Assessor's Map
Book 0322 Page 38
San Bernardino County

REVISED