

THIS MAP IS FOR THE PURPOSE OF AD VALOREM TAXATION ONLY.

Ptn. Sec.9, T.2S.,R1W., S.B.B.&M.

City of Yucaipa
Tax Rate Area
22008

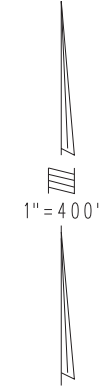
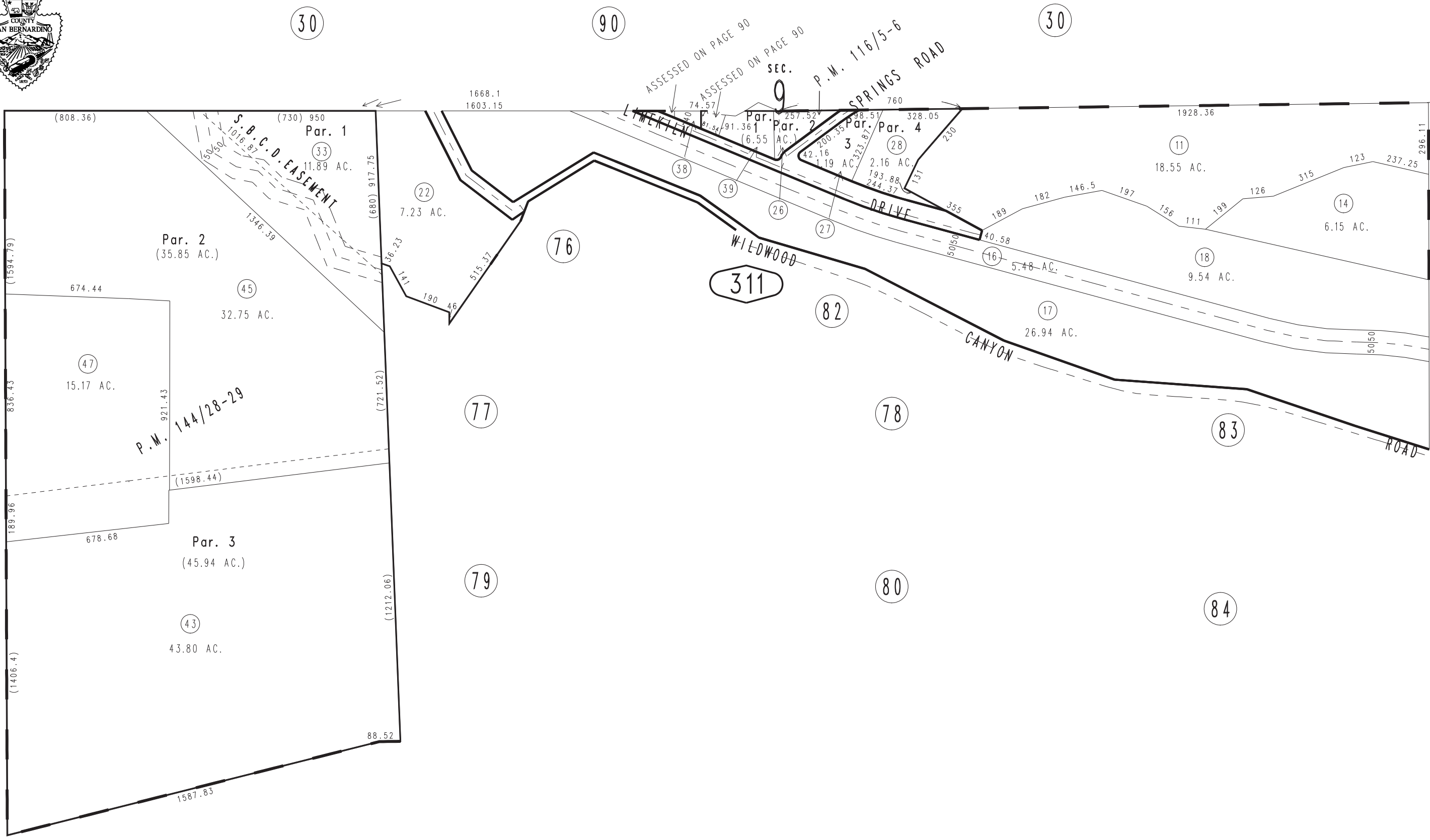
0322-31



1242
62

1242
55

1242
63



0325
11

February 2005

Parcel Map No. 11211, P.M. 144/28-29
Parcel Map No. 9870, P.M. 116/5-6

Assessor's Map
Book 0322 Page 31
San Bernardino County

REVISED
09/12/14 RU
11/26/14 RU