

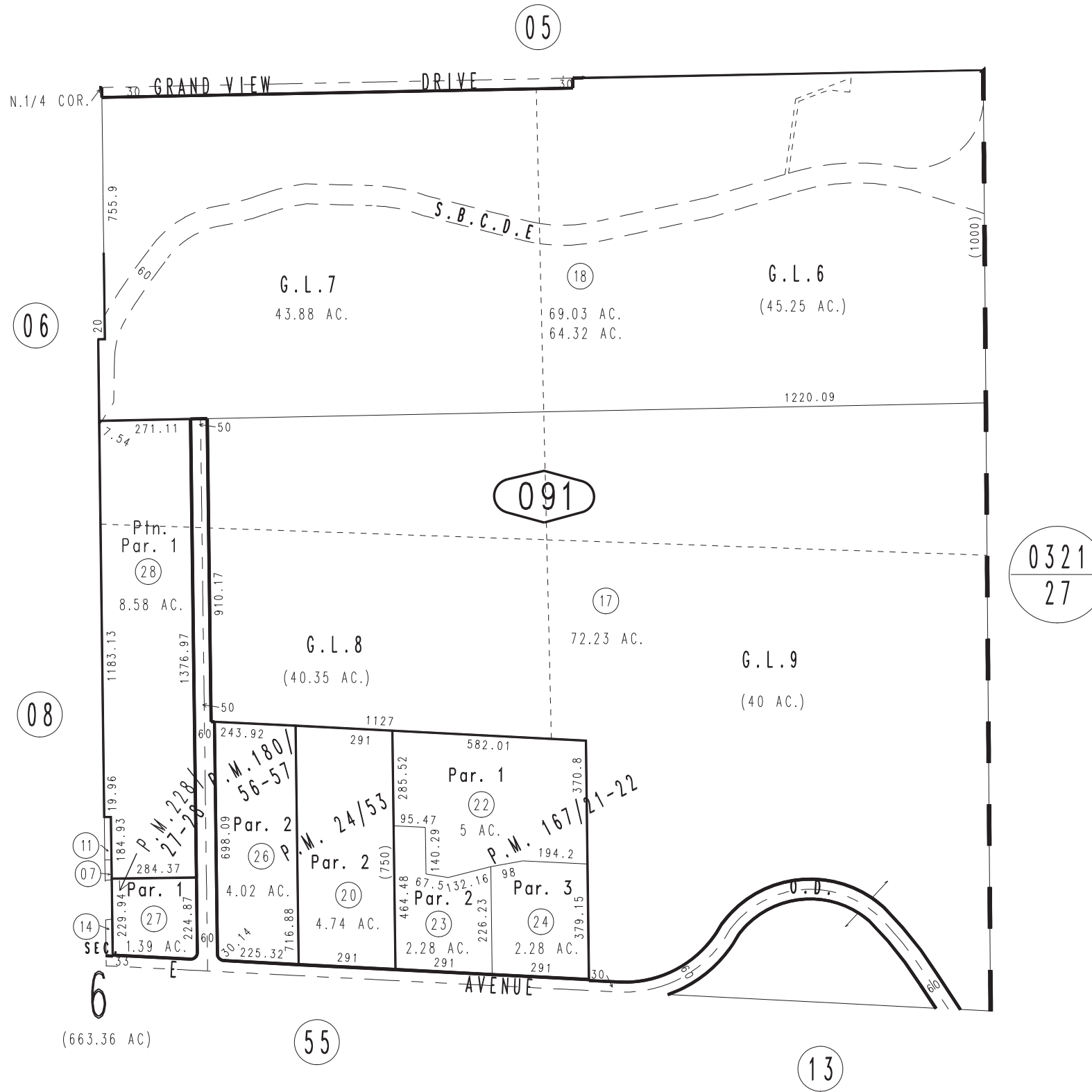
THIS MAP IS FOR THE PURPOSE
OF AD VALOREM TAXATION ONLY.



Ptn. Sec.6, T.2S.,R.1W., S.B.B.&M.

City of Yucaipa
Tax Rate Area
22002

0322-09



Parcel Map No. 18475, P.M. 228/27-28
 Parcel Map No. 14739, P.M. 180/56-57
 Parcel Map No. 13936, P.M. 167/21-22
 Ptn. Parcel Map No. 2710, P.M. 24/53

February 2005

Assessor's Map
 Book 0322 Page 09
 San Bernardino County

REVISED
 05/27/08 KA
 01/13/10 LH