

THIS MAP IS FOR THE PURPOSE OF AD VALOREM TAXATION ONLY.

Ptn. Revised Map of Yucaipa City, M.B. 17/91-93

City of Yucaipa
Tax Rate Area
22002

0322-08



0319
09

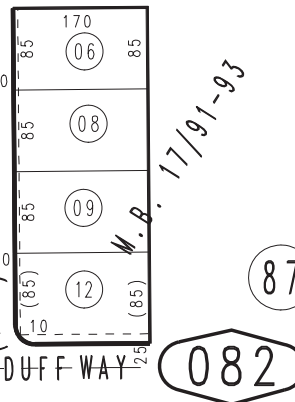
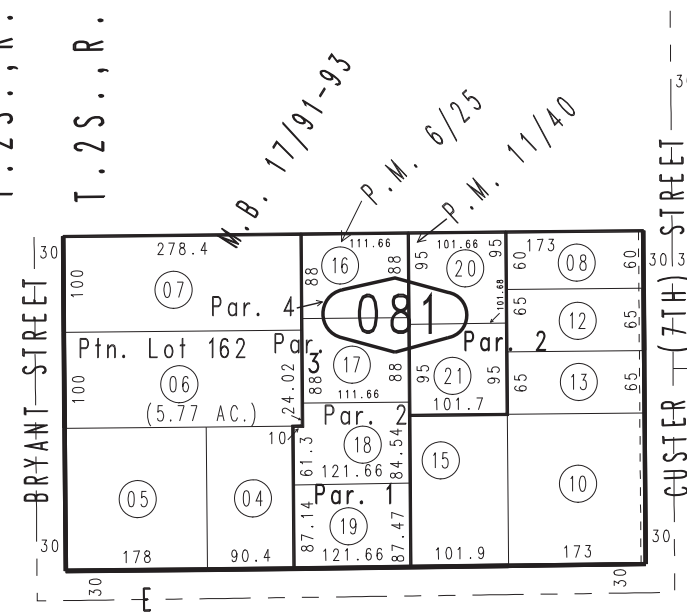
07

06

09

T.2S., R.2W.

T.2S., R.1W.



10

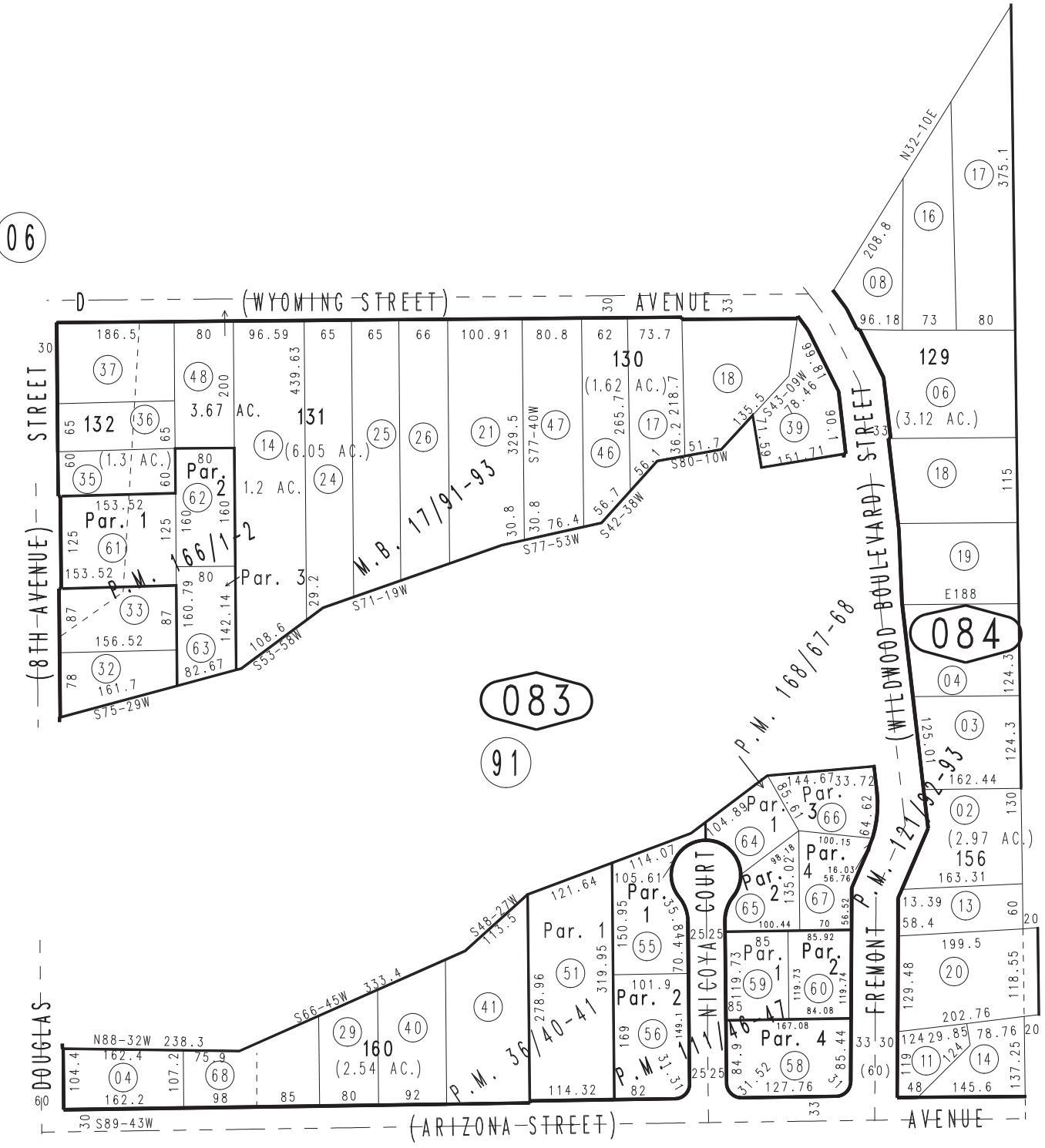
February 2005

Parcel Map No. 10184, P.M. 111/46-47
 Ptn. Parcel Map No. 4020, P.M. 36/40-41
 Parcel Map No. 880, P.M. 11/40
 Parcel Map No. 681, P.M. 6/25

Parcel Map No. 12700, P.M. 168/67-68
 Parcel Map No. 13425, P.M. 166/1-2
 Parcel Map No. 11118, P.M. 121/92-93

Ptn. N.W. 1/4, Sec. 6
 T.2S., R.1W.

Assessor's Map
 Book 0322 Page 08
 San Bernardino County



083

91

11

REVISED
08/19/21 RU