

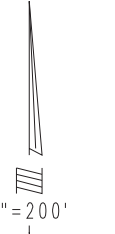
THIS MAP IS FOR THE PURPOSE OF AD VALOREM TAXATION ONLY.



Ptn. Sec.6, T.2S.,R.1W., S.B.B.&M.

City of Yucaipa
Tax Rate Area
22002

0322-06



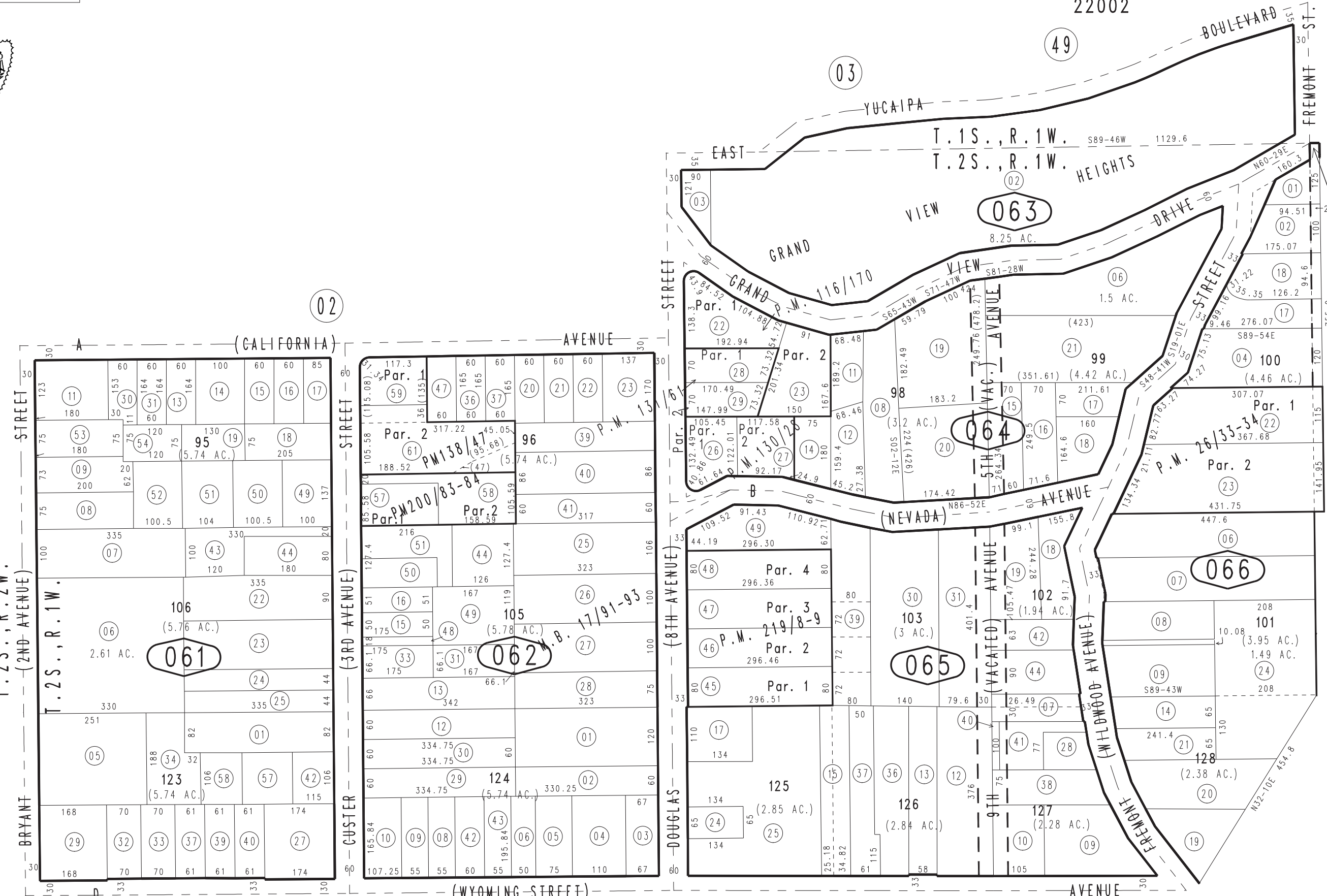
N1/4 COR. SEC.6
T.2S.,R.1W., S.B.B.&M.

0319
06

0319
08

09

08



Parcel Map. 11607, P.M. 130/28
Parcel Map. 7645, P.M. 116/70
Parcel Map No. 2677, P.M. 26/33-34
Ptn. Revised Map of Yucaipa City M.B. 17/91-93

Parcel Map No. 16821, P.M. 219/8-9
Parcel Map No. 16104, P.M. 200/83-84
Parcel Map No. 10198, P.M. 138/47
Parcel Map. 11606, P.M. 131/61

Assessor's Map
Book 0322 Page 06
San Bernardino County

February 2005