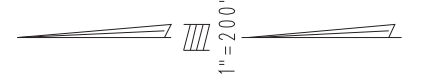


THIS MAP IS FOR THE PURPOSE OF AD VALOREM TAXATION ONLY.

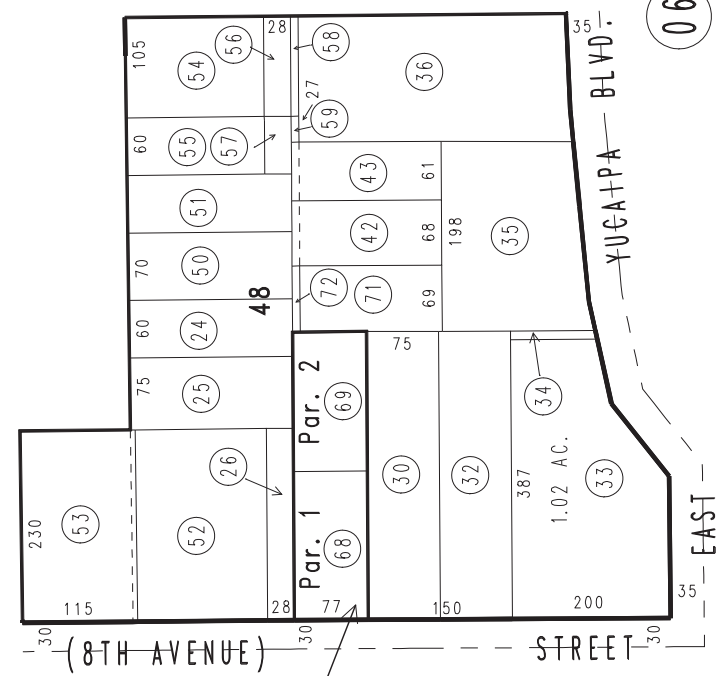
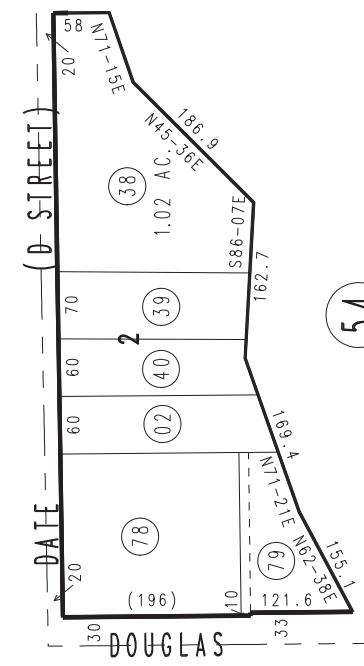
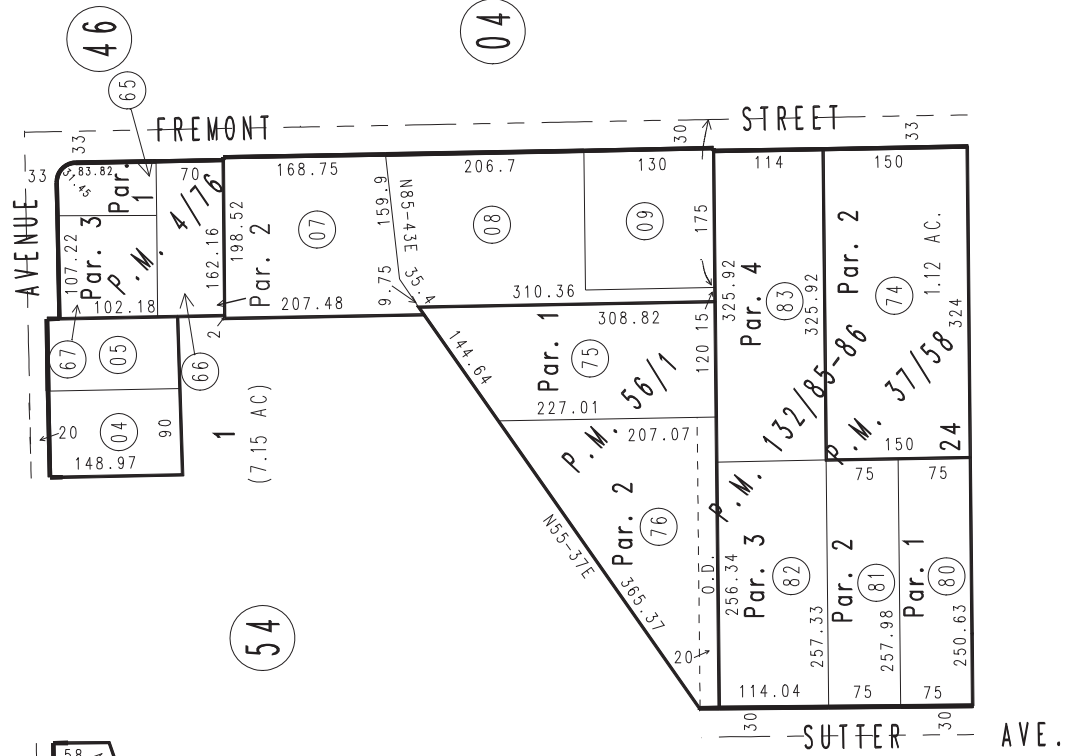
Ptn. Revised Map of Yucaipa City, M.B. 17/91-93

City of Yucaipa
Tax Rate Area
22002

0322-03



0321
33



- Parcel Map No. 11720, P.M. 132/85-86
- Parcel Map No. 5979, P.M. 56/1
- Parcel Map No. 3444, P.M. 37/58
- Parcel Map No. 474, P.M. 4/89
- Parcel Map No. 486, P.M. 4/76

February 2005

Assessor's Map
Book 0322 Page 03
San Bernardino County

REVISED