

THIS MAP IS FOR THE PURPOSE
OF AD VALOREM TAXATION ONLY.

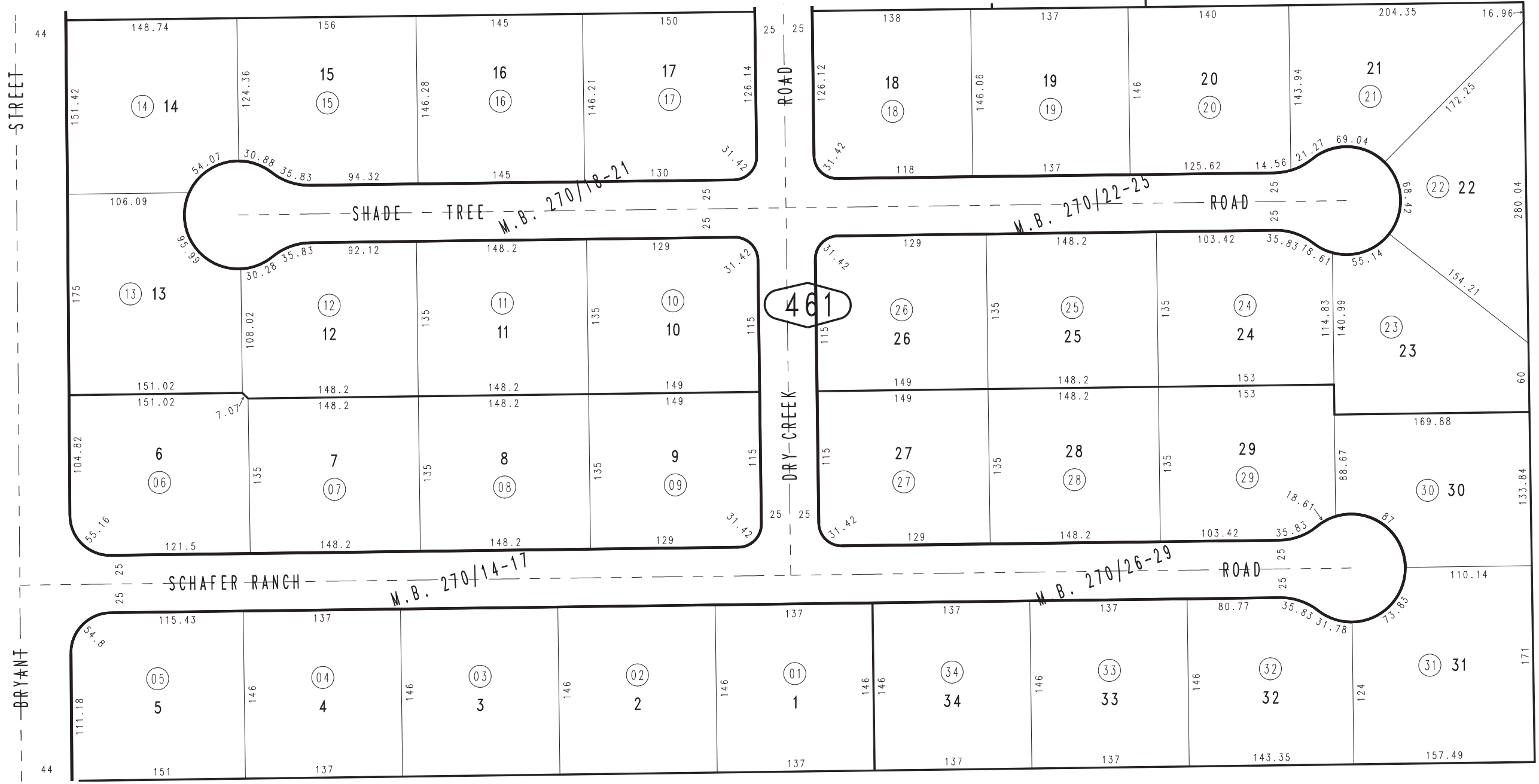
Tract No. 13799-2, M.B. 270/18-21

City of Yucaipa
Tax Rate Area
22002

0321 - 46



51



461

0303
05

40

05

January 2005

Tract No. 13799, M.B. 270/26-29
Tract No. 13799-3, M.B. 270/22-25
Tract No. 13799-1, M.B. 270/14-17

Ptn. SW 1/4, Sec. 30
T.1S., R.1W.

Assessor's Map
Book 0321 Page 46
San Bernardino County

REVISED
08/07/06 GW