

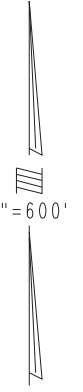
THIS MAP IS FOR THE PURPOSE
OF AD VALOREM TAXATION ONLY.



Sec.5, T.2S.,R.1W., S.B.B.&M.

24

0321 - 27
City of Yucaipa
Yucaipa Joint Unified
Tax Rate Area
22005,22058

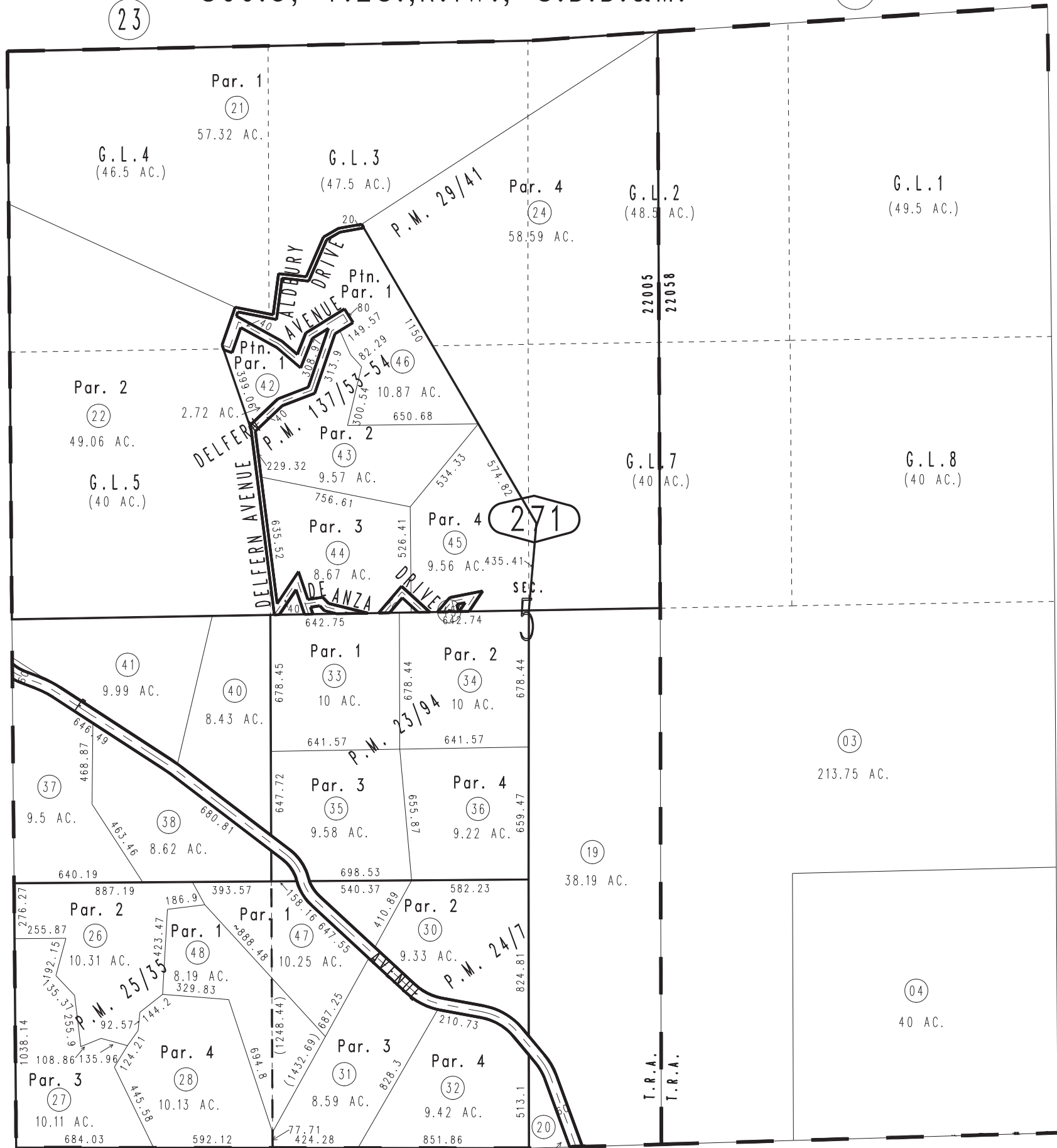


0322
09

0322
13

0322
57

0322
13



28

Parcel Map No. 10199, P.M. 137/53-54
Parcel Map No. 2549, P.M. 29/41
Record of Survey, R.S. 29/27
Parcel Map No. 2550, P.M. 25/35
Parcel Map No. 2552, P.M. 24/7
Parcel Map No. 2551, P.M. 23/94

1242
33

1242
42

1242
51

1242
58

Assessor's Map
Book 0321 Page 27
San Bernardino County

REVISED
11/06/12 KC-MC