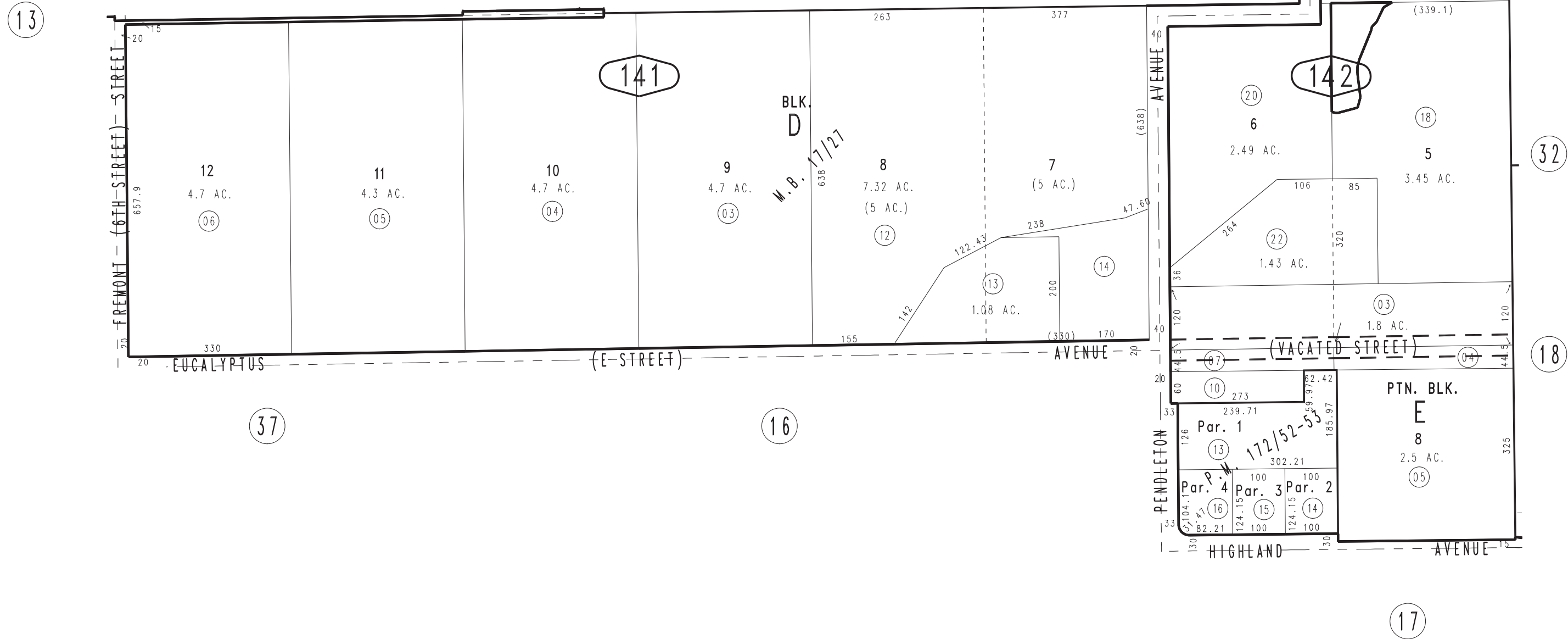


THIS MAP IS FOR THE PURPOSE  
OF AD VALOREM TAXATION ONLY.

Ptn. N.E.1/4 Sec.31, T.1S.,R.1W., S.B.B.&M.

City of Yucaipa  
Tax Rate Area  
22002

0321 - 14



January 2005

Parcel Map No.13908, P.M. 172/52-53  
Ptn. Yucaipa Water & Lumber Co., Sub. No. 1, M.B. 17/27

Assessor's Map  
Book 0321 Page 14  
San Bernardino County

REVISED  
08/24/16 GW  
09/01/16 GW  
10/26/17 RU  
08/01/18 KA