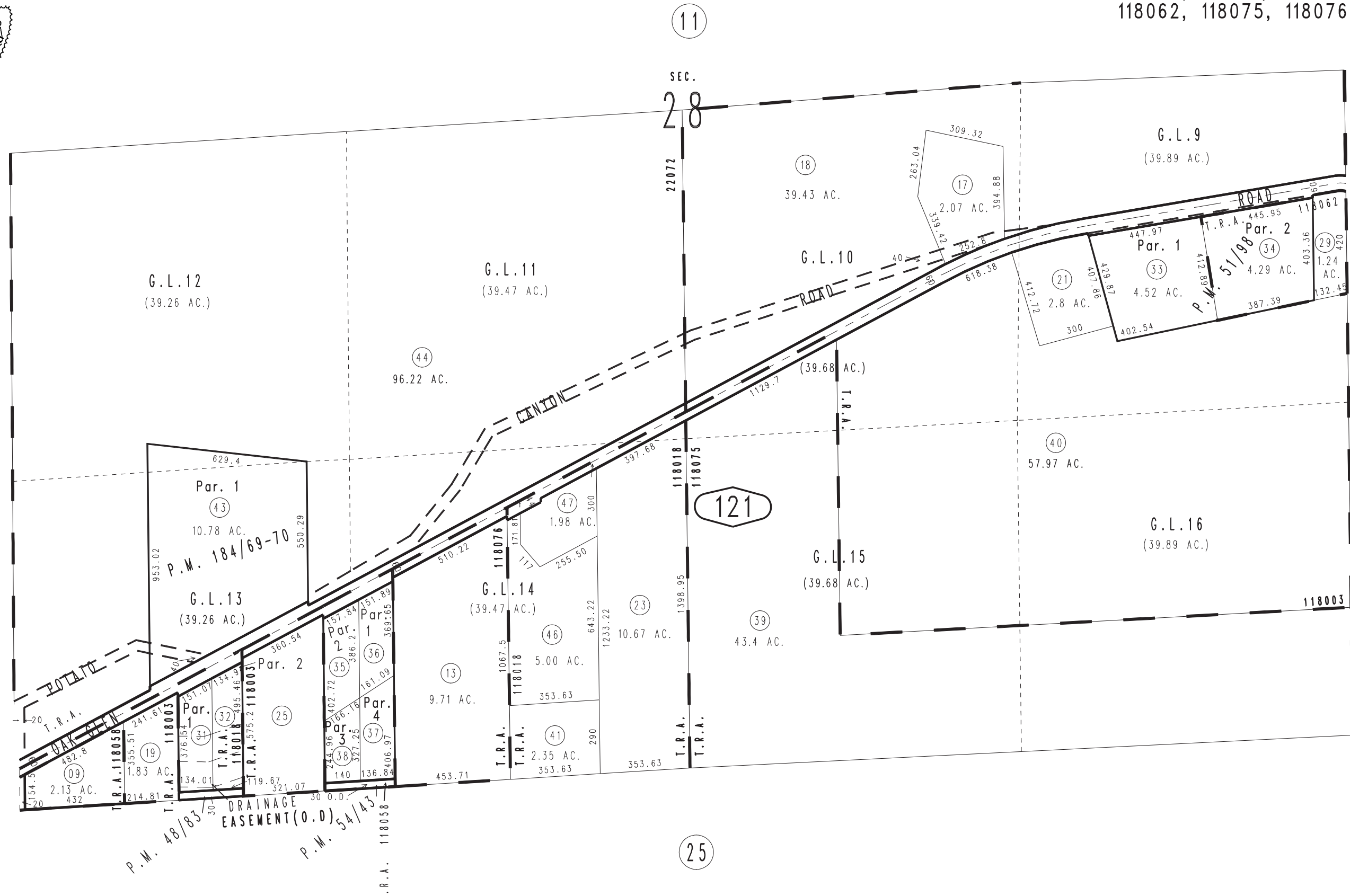


THIS MAP IS FOR THE PURPOSE OF AD VALOREM TAXATION ONLY.



# S.1/2 Sec.28, T.1S.,R.1W., S.B.B.&M.

City of Yucaipa 0321 - 12  
Yucaipa Joint Unified  
Tax Rate Area  
118003, 118018, 118058  
118062, 118075, 118076, 22072



10

11

0324  
03

0324  
10

121

25

Parcel Map No. 15032, P.M. 184/69-70  
Parcel Map No. 4832, P.M. 54/43  
Parcel Map No. 5594, P.M. 51/98  
Parcel Map No. 5171, P.M. 48/83

January 2005

Assessor's Map  
Book 0321 Page 12  
San Bernardino County

REVISED  
11/06/15 RU  
12/01/15 RU  
12/15/15 BK-MC