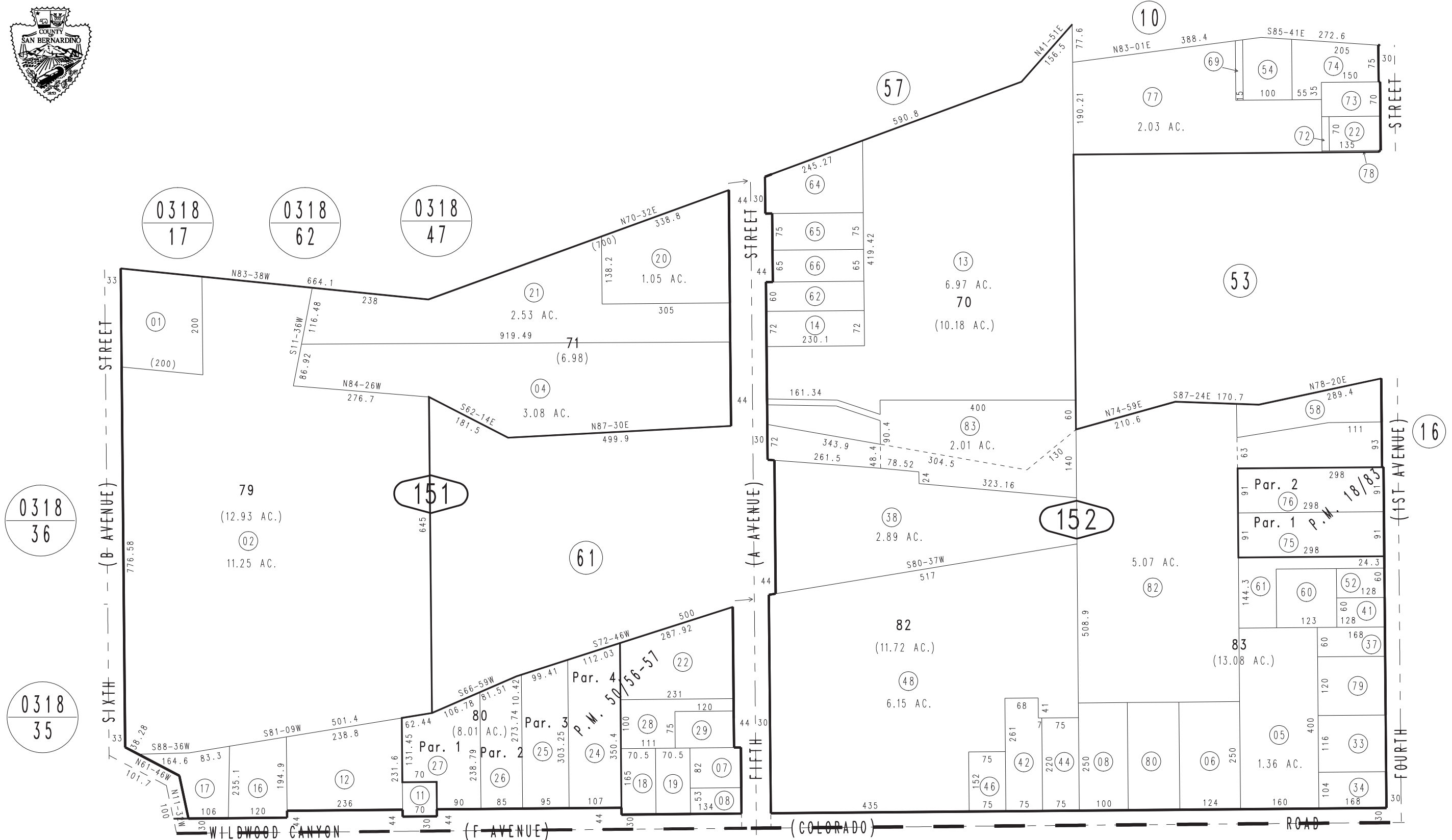


THIS MAP IS FOR THE PURPOSE
OF AD VALOREM TAXATION ONLY.

Ptn. Subdivision No. 3 of Yucaipa Valley M.B. 19/1 & 19/21

City of Yucaipa
Tax Rate Area
22002

0319 - 15



December 2004

Parcel Map No. 5434, P.M. 50/56-57
Parcel Map No. 2133, P.M. 18/83

Ptn. N.E.1/4, Sec. 11
T.2S., R.2W.

Assessor's Map
Book 0319 Page 15
San Bernardino County

REVISED
11/17/23 KA