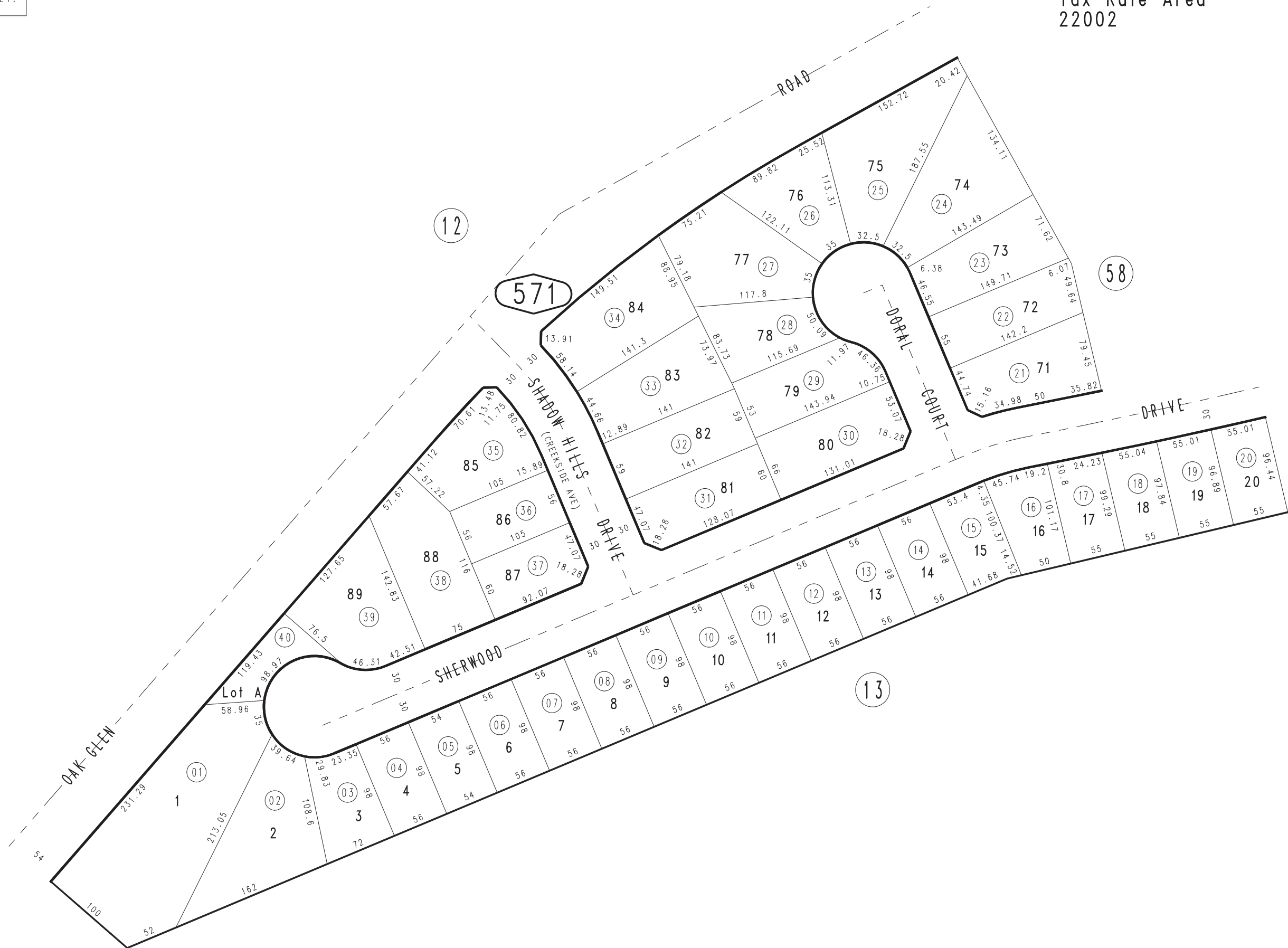


THIS MAP IS FOR THE PURPOSE  
OF AD VALOREM TAXATION ONLY.

Ptn. Tract No. 15891, M.B. 283/97-102

City of Yucaipa  
Tax Rate Area  
22002

0303-57



Ptn. N.E.1/4 & S.E.1/4, Sec. 35  
T.1S., R.2W.

Assessor's Map  
Book 0303 Page 57  
San Bernardino County

REVISED  
05/31/13 BK-MC