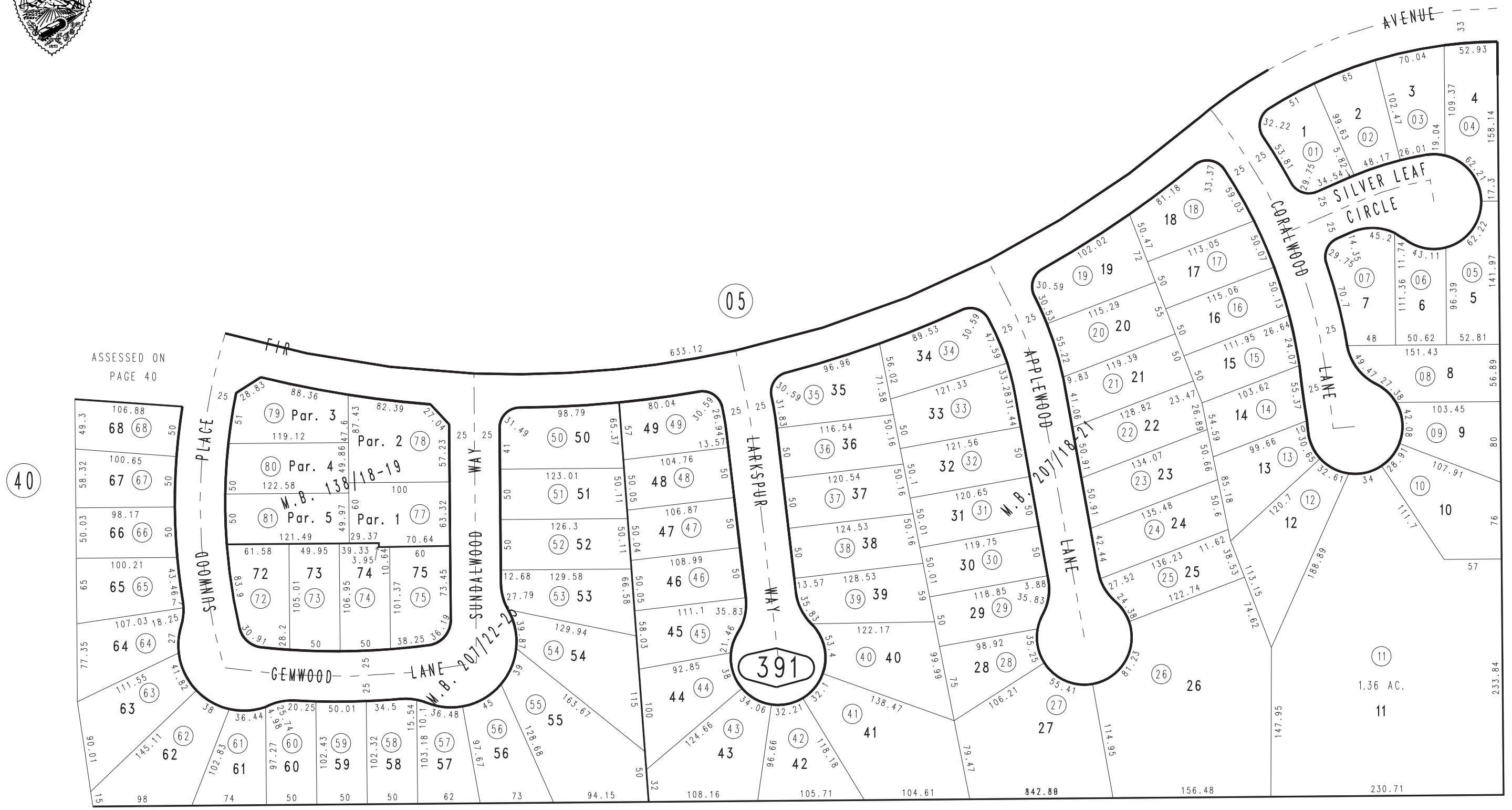


THIS MAP IS FOR THE PURPOSE OF AD VALOREM TAXATION ONLY.

Ptn. S.1/2 Sec.25, T.1S.,R.2W., S.B.B.&M.

City of Yucaipa
Tax Rate Area
22002

0303-39



ASSESSED ON
PAGE 40

Ptn. Tract No. 13508-2, M.B. 207/22-25
Tract No. 13508-1, M.B. 207/18-21
Parcel Map No. 11950, P.M. 138/18-19

January 2005

Assessor's Map
Book 0303 Page 39
San Bernardino County

REVISED
03/06/09 KC