

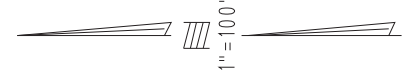
THIS MAP IS FOR THE PURPOSE  
OF AD VALOREM TAXATION ONLY.



# Ptn. Revised Map of Yucaipa City M.B. 17/91-93

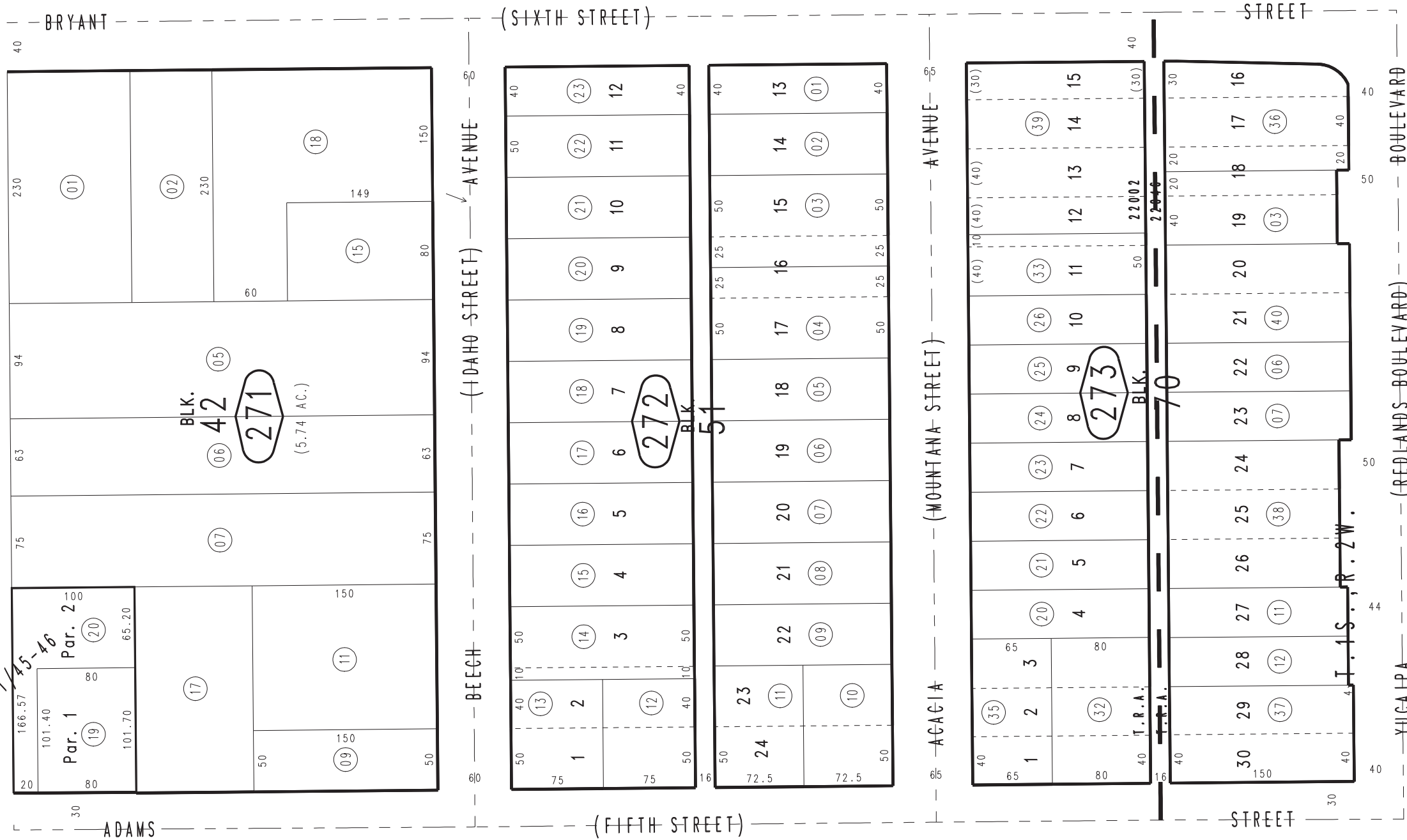
City of Yucaipa  
Tax Rate Area  
22002,22046

0303-27



23

P.M. 201/45-46



0322  
38

0322  
02

0319  
06

26