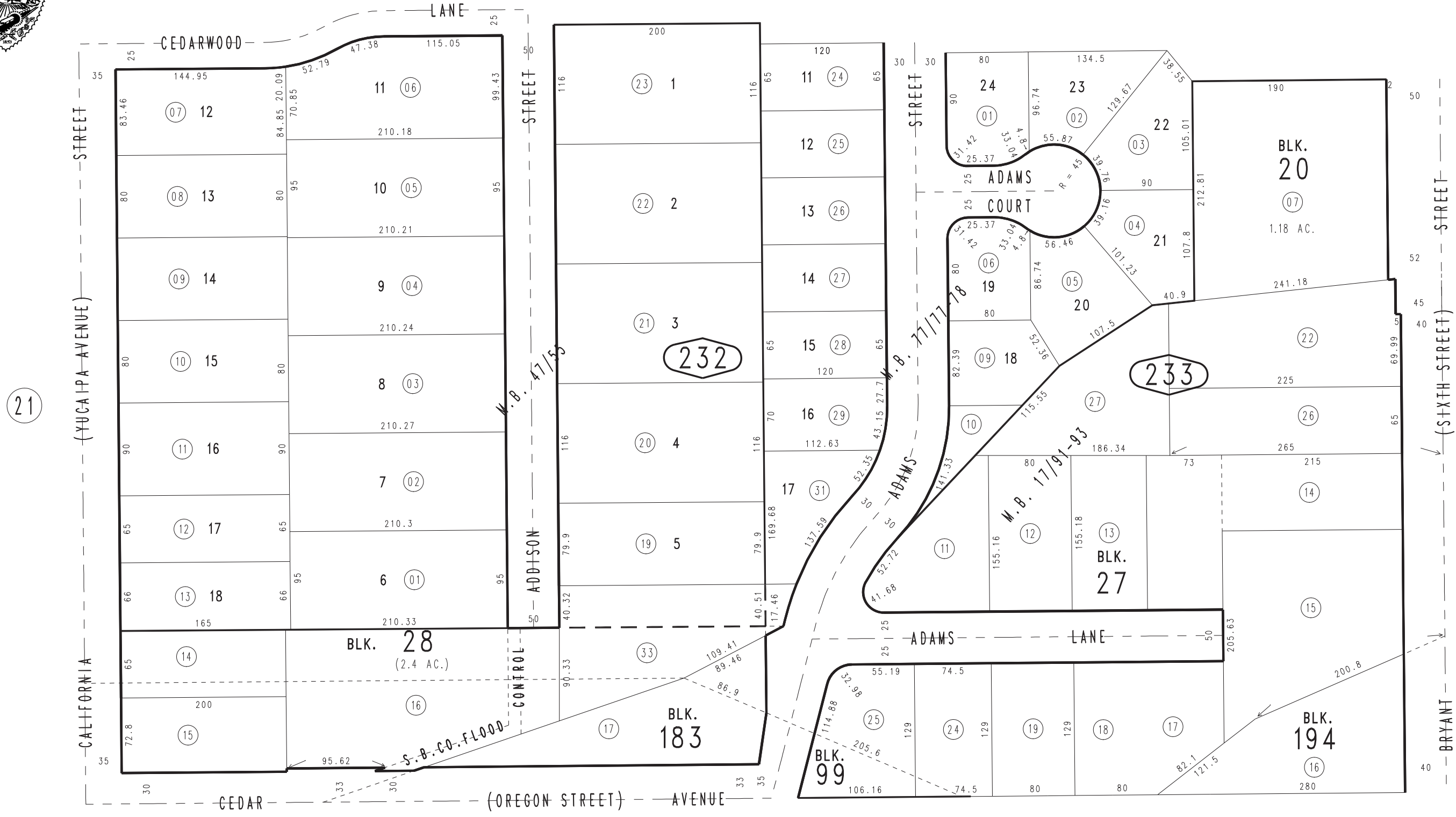


THIS MAP IS FOR THE PURPOSE  
OF AD VALOREM TAXATION ONLY.

# Ptn. Revised Map of Yucaipa City, M.B. 17/91-93 Tract No. 3545, M.B. 47/55

City of Yucaipa  
Tax Rate Area  
22002

0303-23



21

0322  
38

26

27