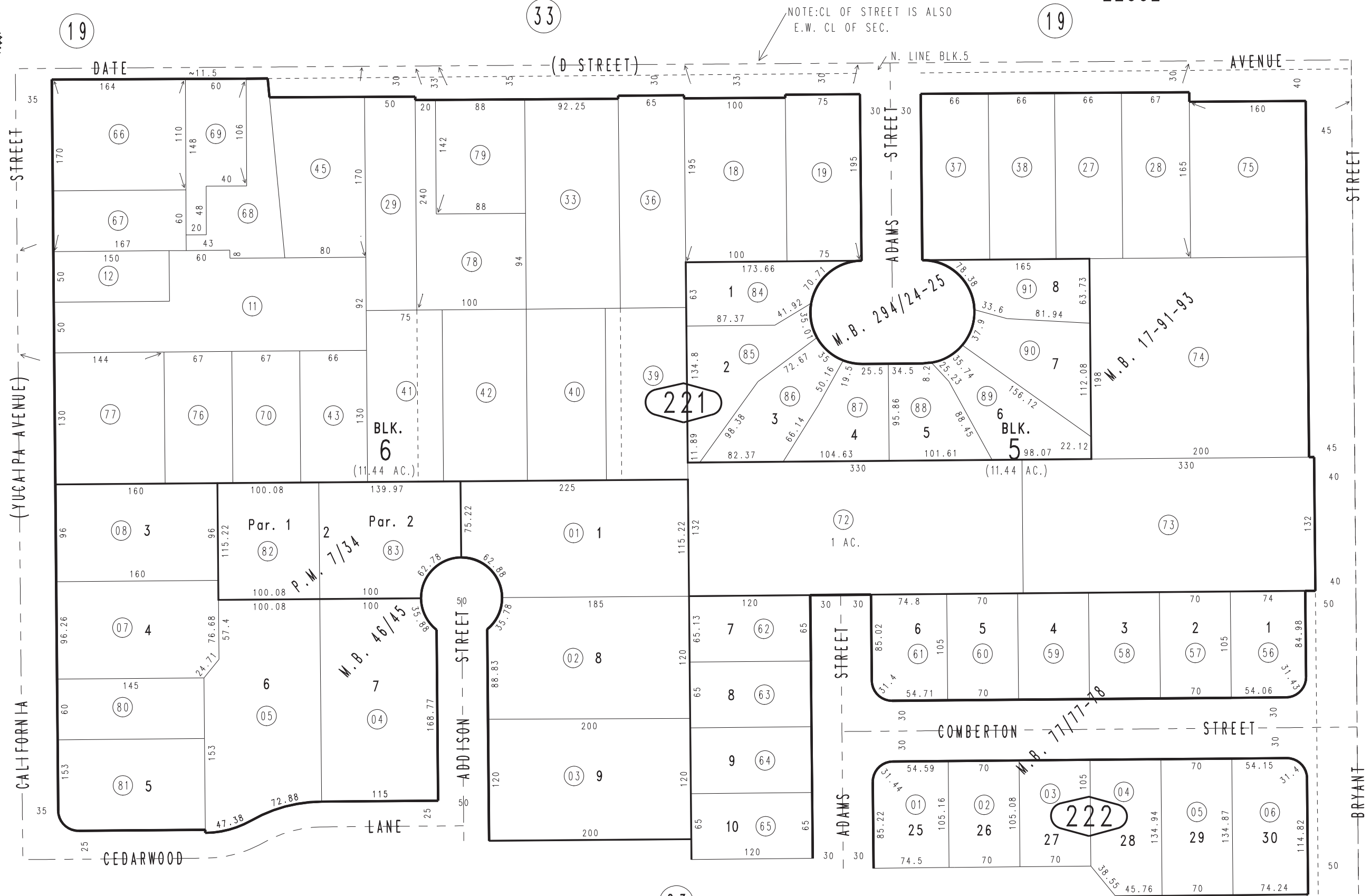


THIS MAP IS FOR THE PURPOSE
OF AD VALOREM TAXATION ONLY.

Ptn. Revised Map of Yucaipa City, M.B. 17/91-92-93 Tract No. 3503, M.B. 46/45

City of Yucaipa
Tax Rate Area
22002

0303-22



T. 1 S., R. 1 W.

0322
40

20

23

Tract No. 15933, M.B. 294/24-25
Ptn. Tract No. 6044, M.B. 77/77-78
Parcel Map No. 750, P.M. 7/34

Assessor's Map
Book 0303 Page 22
San Bernardino County