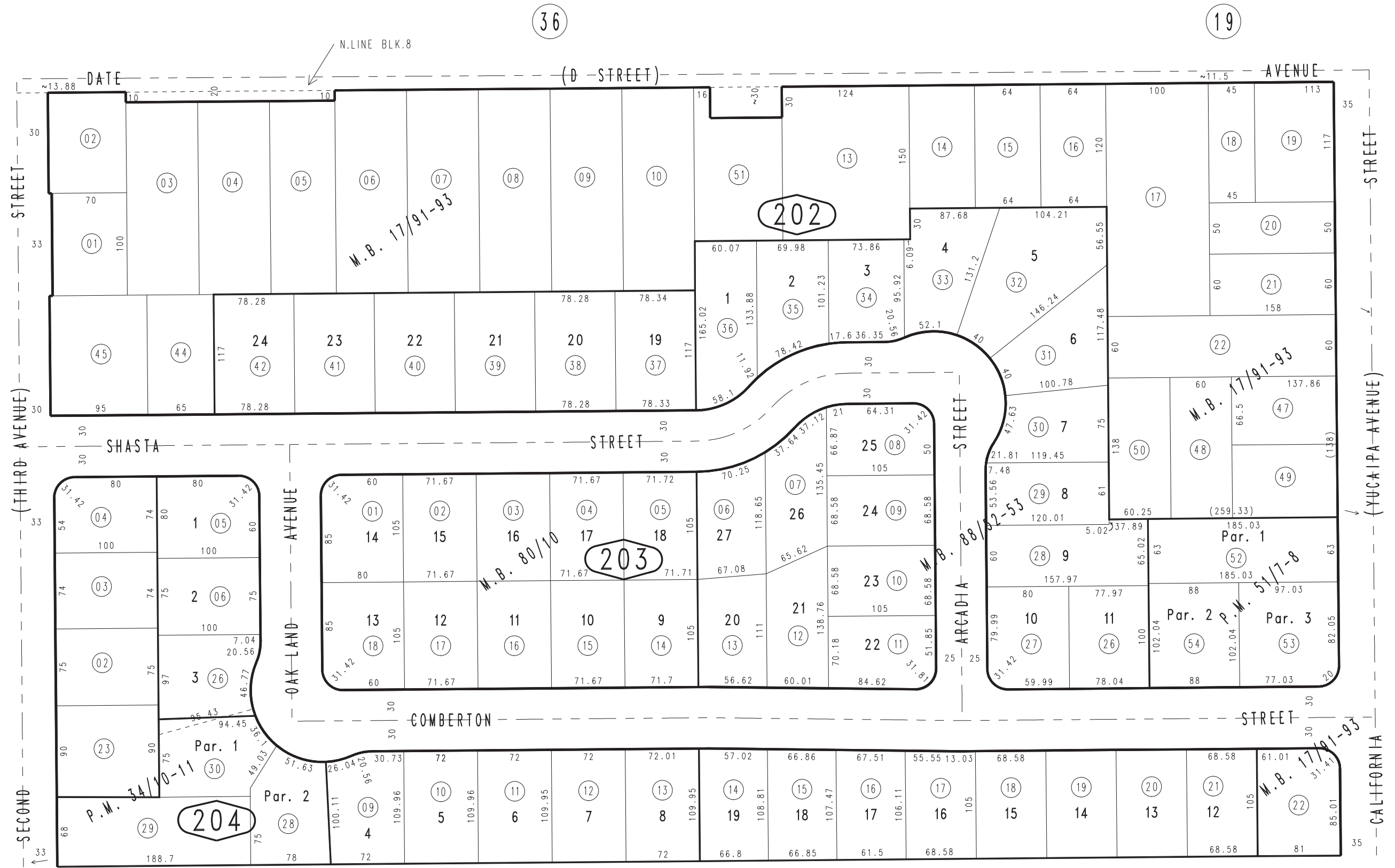


THIS MAP IS FOR THE PURPOSE OF AD VALOREM TAXATION ONLY.

Ptn. Revised Map of Yucaipa City M.B. 17/91-93

City of Yucaipa
Tax Rate Area
22002

0303-20



Tract No. 6558, M.B. 88/52-53
 Tract No. 6309, M.B. 80/10
 Parcel Map No. 4702, P.M. 51/7-8
 Ptn. Parcel Map No. 3507, P.M. 34/10-11

January 2005

Assessor's Map
 Book 0303 Page 20
 San Bernardino County

REVISED