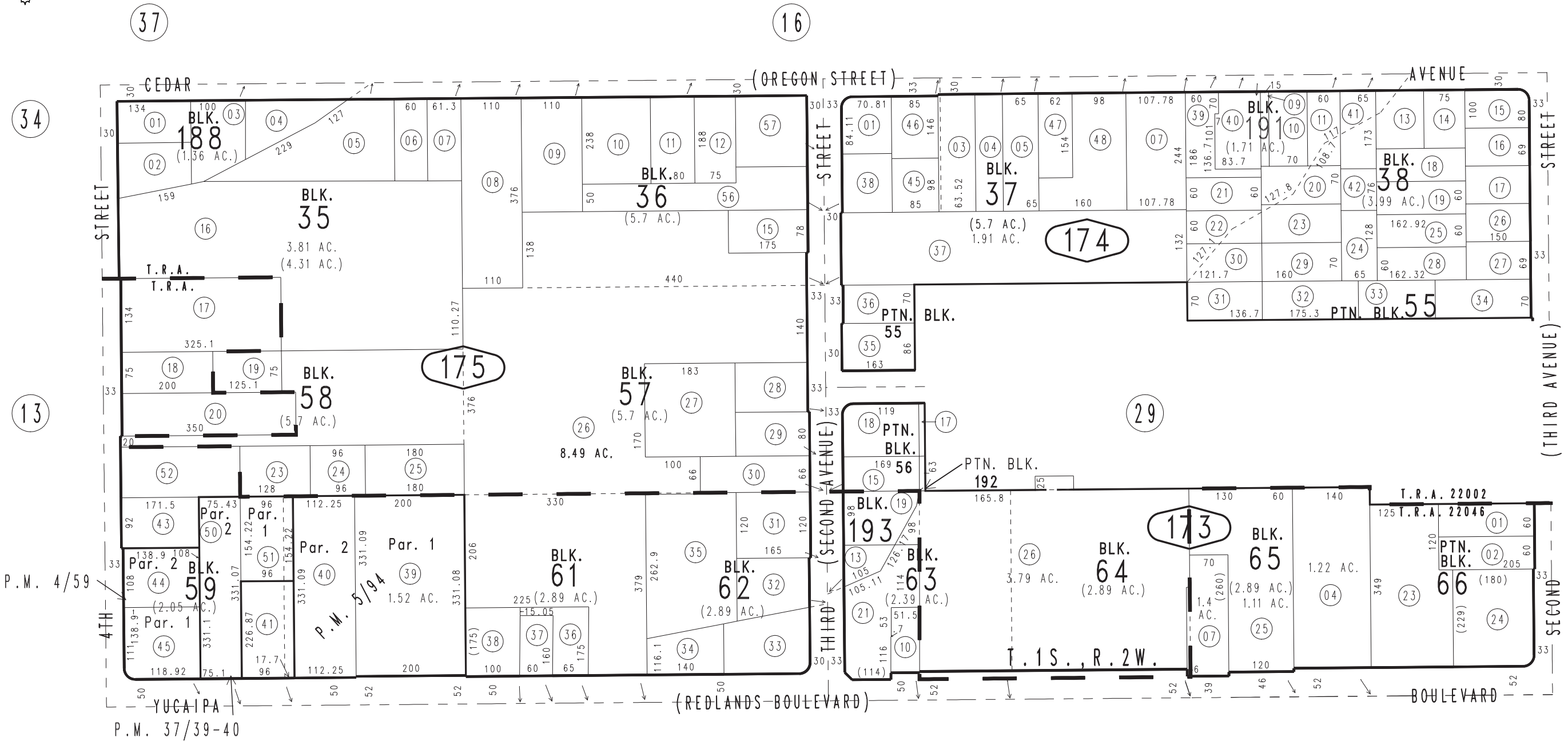


THIS MAP IS FOR THE PURPOSE OF AD VALOREM TAXATION ONLY.

Ptn. Revised Map of Yucaipa City M.B. 17/91-93

City of Yucaipa
Tax Rate Area
22002,22046

0303-17



0319
02

0319
34

January 2005

Parcel Map No. 4039, P.M. 37/39-40
Parcel Map No. 638, P.M. 5/94
Parcel Map No. 396, P.M. 4/59

Ptn. S.W.1/4, Sec. 36
T.1S., R.2W.

Assessor's Map
Book 0303 Page 17
San Bernardino County

REVISED	
11/19/18	KA
02/13/19	KA
04/15/19	KA
04/18/19	KA
08/08/19	RU
12/05/19	KA