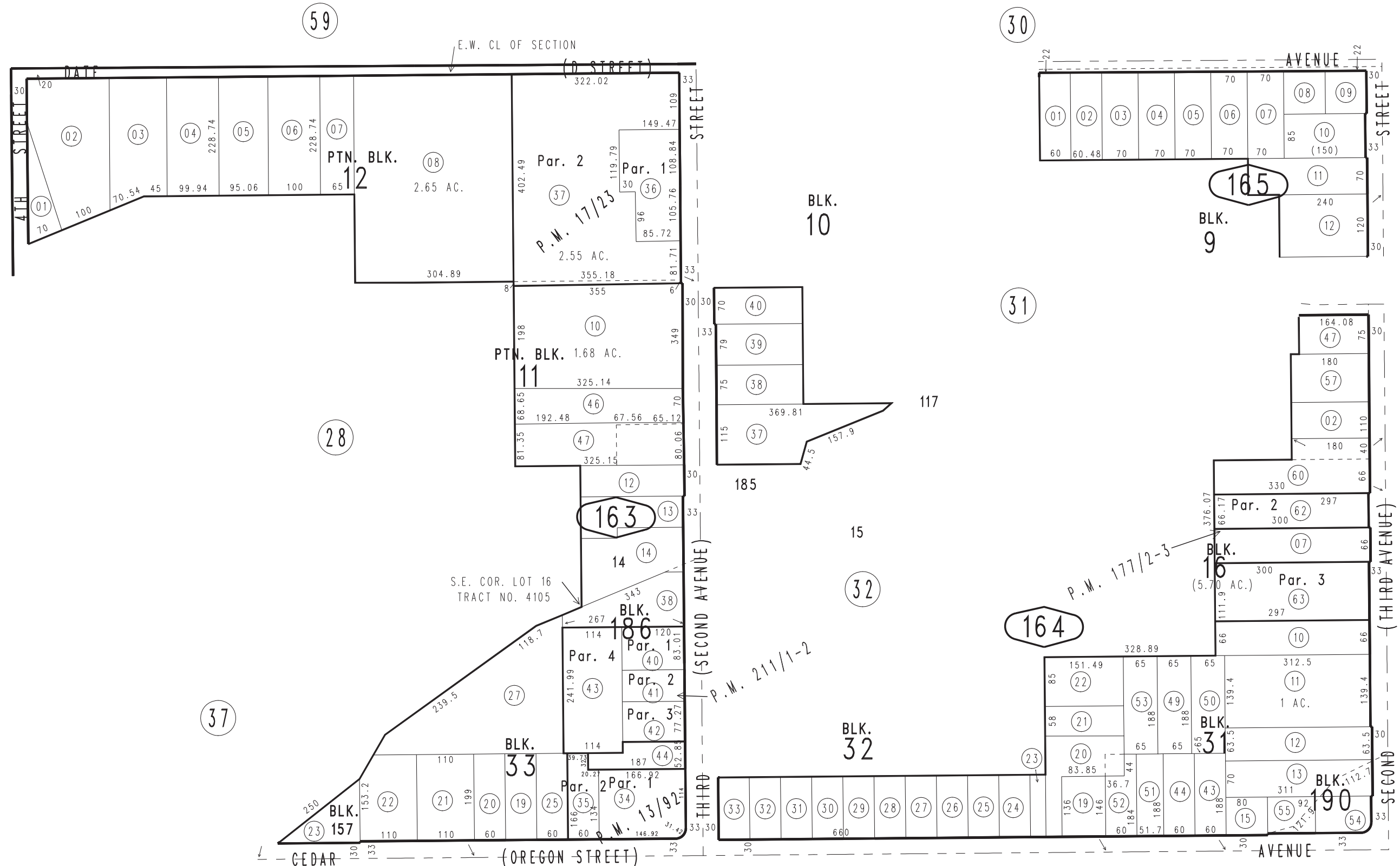


THIS MAP IS FOR THE PURPOSE OF AD VALOREM TAXATION ONLY.

Ptn. Revised Map of Yucaipa City M.B. 17/91-93

City of Yucaipa
Tax Rate Area
22002

0303-16



Parcel Map No. 15743, P.M. 211/1-2
 Ptn. Parcel Map No. 12965, P.M. 177/2-3
 Parcel Map No. 2055, P.M. 17/23
 Parcel Map No. 1465, P.M. 13/92

January 2005

Ptn. S.W.1/4, Sec. 36
 T.1S., R.2W.

Assessor's Map
 Book 0303 Page 16
 San Bernardino County

REVISED
 07/20/22 RU
 07/21/22 RU