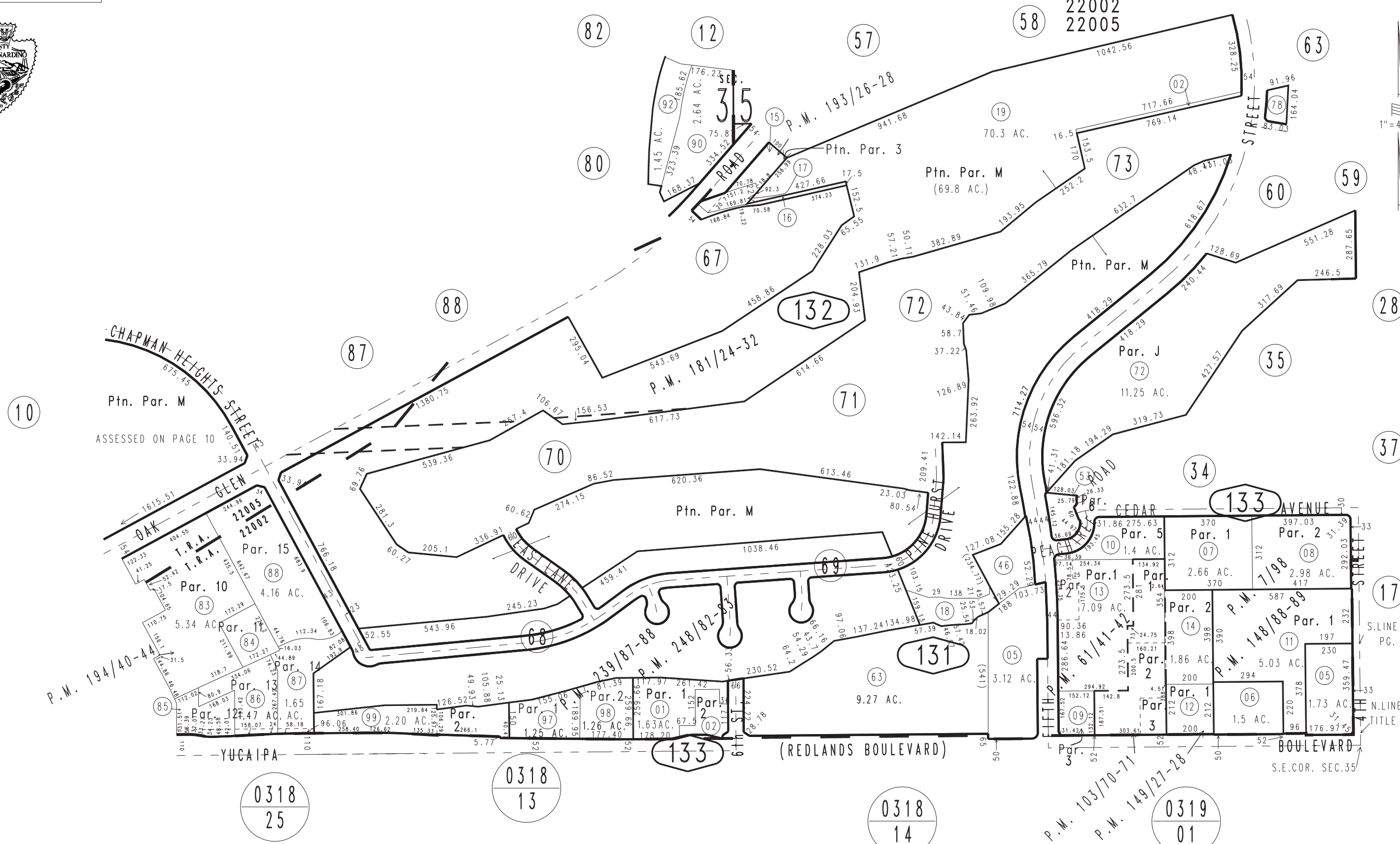
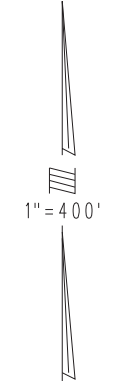


THIS MAP IS FOR THE PURPOSE OF AD VALOREM TAXATION ONLY.

S.E.1/4 & S.W.1/4 Sec.35, T.1S.,R.2W., S.B.B.&M.

City of Yucaipa
Tax Rate Area
22002
22005

0303-13



Parcel Map No. 10297, P.M. 149/27-28
Parcel Map No. 13083, P.M. 148/88-89
Parcel Map No. 9300, P.M. 103/70-71
Ptn. Parcel Map No. 6126, P.M. 61/41-42
Parcel Map No. 857, P.M. 7/98

Parcel Map No. 19594, P.M. 248/82-83
Parcel Map No. 18337, P.M. 239/87-88
Ptn. Parcel Map No. 15596, P.M. 194/40-44
Ptn. Parcel Map No. 15253, P.M. 193/26-28
Ptn. Parcel Map No. 13021, P.M. 181/24-32

Assessor's Map
Book 0303 Page 13
San Bernardino County

REVISED
01/29/20 KC
01/07/22 KC