

THIS MAP IS FOR THE PURPOSE OF AD VALOREM TAXATION ONLY.

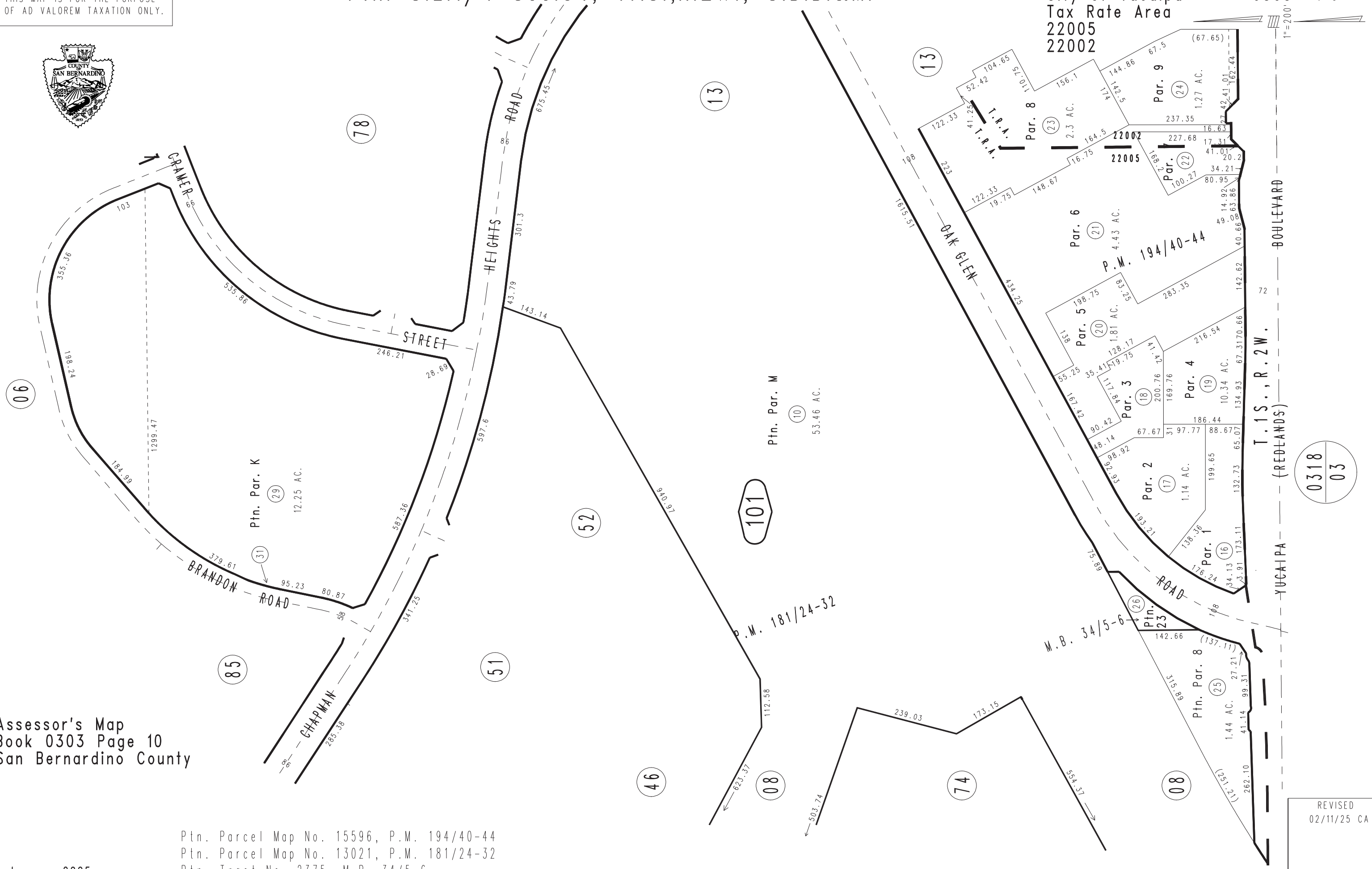


Ptn. S.E.1/4 Sec.34, T.1S.,R.2W., S.B.B.&M.

City of Yucaipa
Tax Rate Area
22005
22002

0303-10

1"=200'



Assessor's Map
Book 0303 Page 10
San Bernardino County

Ptn. Parcel Map No. 15596, P.M. 194/40-44
Ptn. Parcel Map No. 13021, P.M. 181/24-32
Ptn. Tract No. 2375, M.B. 34/5-6

January 2005

0318
03

REVISED
02/11/25 CA