

THIS MAP IS FOR THE PURPOSE OF AD VALOREM TAXATION ONLY.



Ptn. S.W.1/4 Sec.34, (08) T.1S.,R.2W., S.B.B.&M.

City of Yucaipa Tax Rate Area 22029, 22061 0303 - 07
22062

(06)

43
ROAD
HEIGHTS
CHAPMAN
43

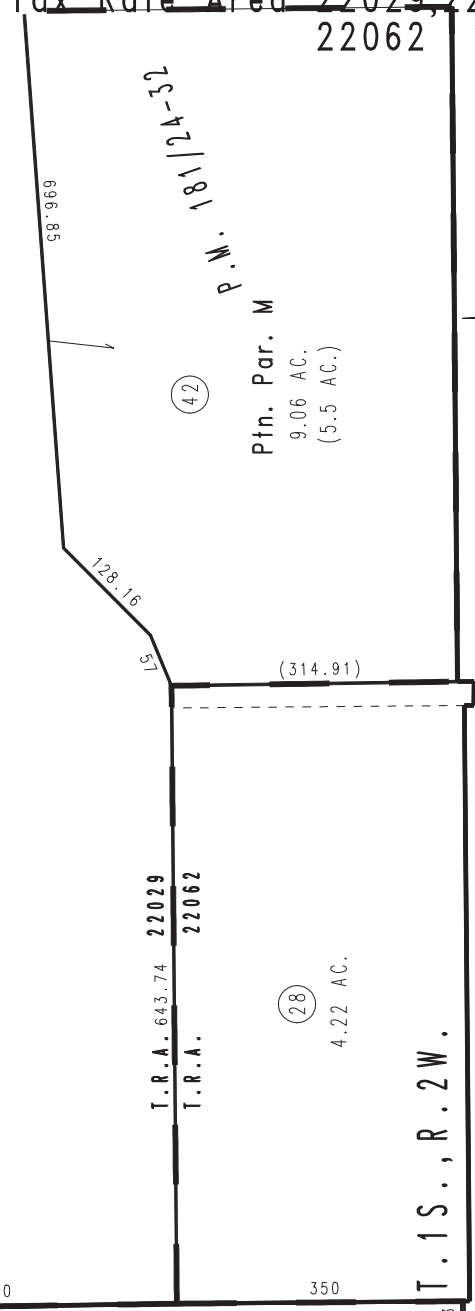
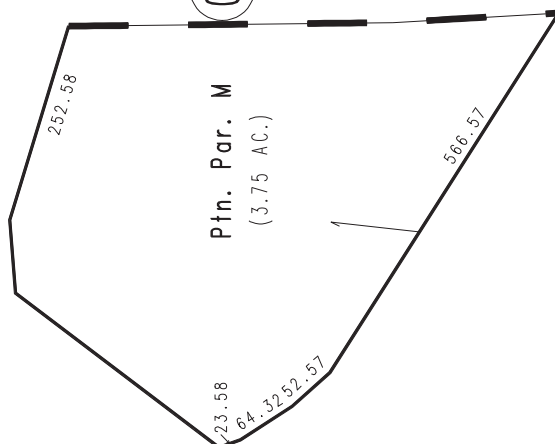
(48)

(47)

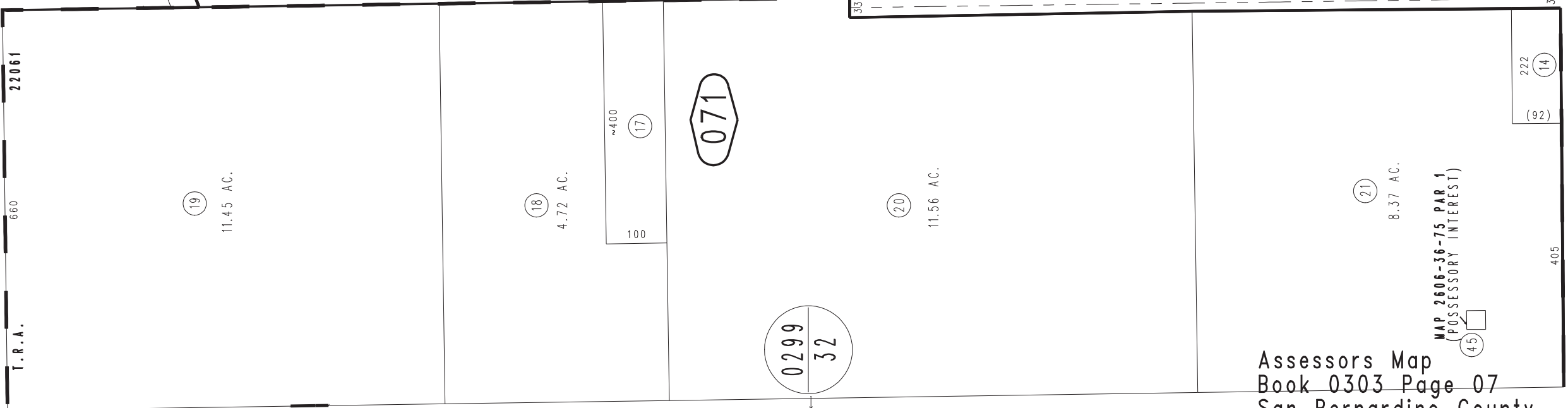
(61)

(53)

(50)



0298
32



0318
01

January 2005

Assessors Map
Book 0303 Page 07
San Bernardino County

REVISED
10/13/22 GW
10/30/24 KC