

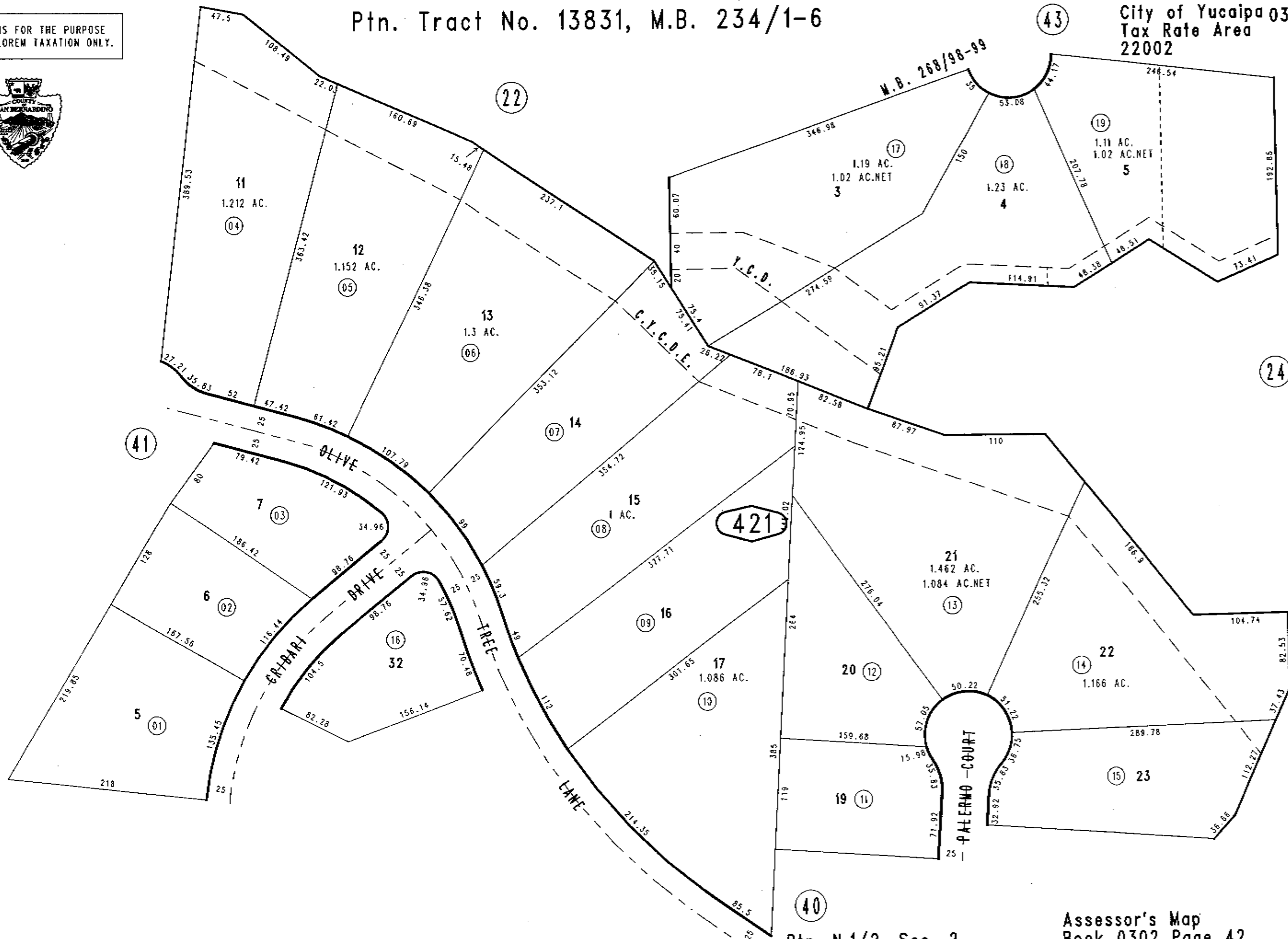
THIS MAP IS FOR THE PURPOSE
OF AD VALOREM TAXATION ONLY.



Ptn. Tract No. 13831, M.B. 234/1-6

City of Yucaipa 0302-42
Tax Rate Area
22002

1"=100'



September 2004

Ptn. Tract No. 14287, M.B. 268/98-99

Ptn. N.1/2, Sec. 2
T.1S., R.2W.

Assessor's Map
Book 0302 Page 42
San Bernardino County

REVISED
06/24/05 RLU