

THIS MAP IS FOR THE PURPOSE
OF AD VALOREM TAXATION ONLY.

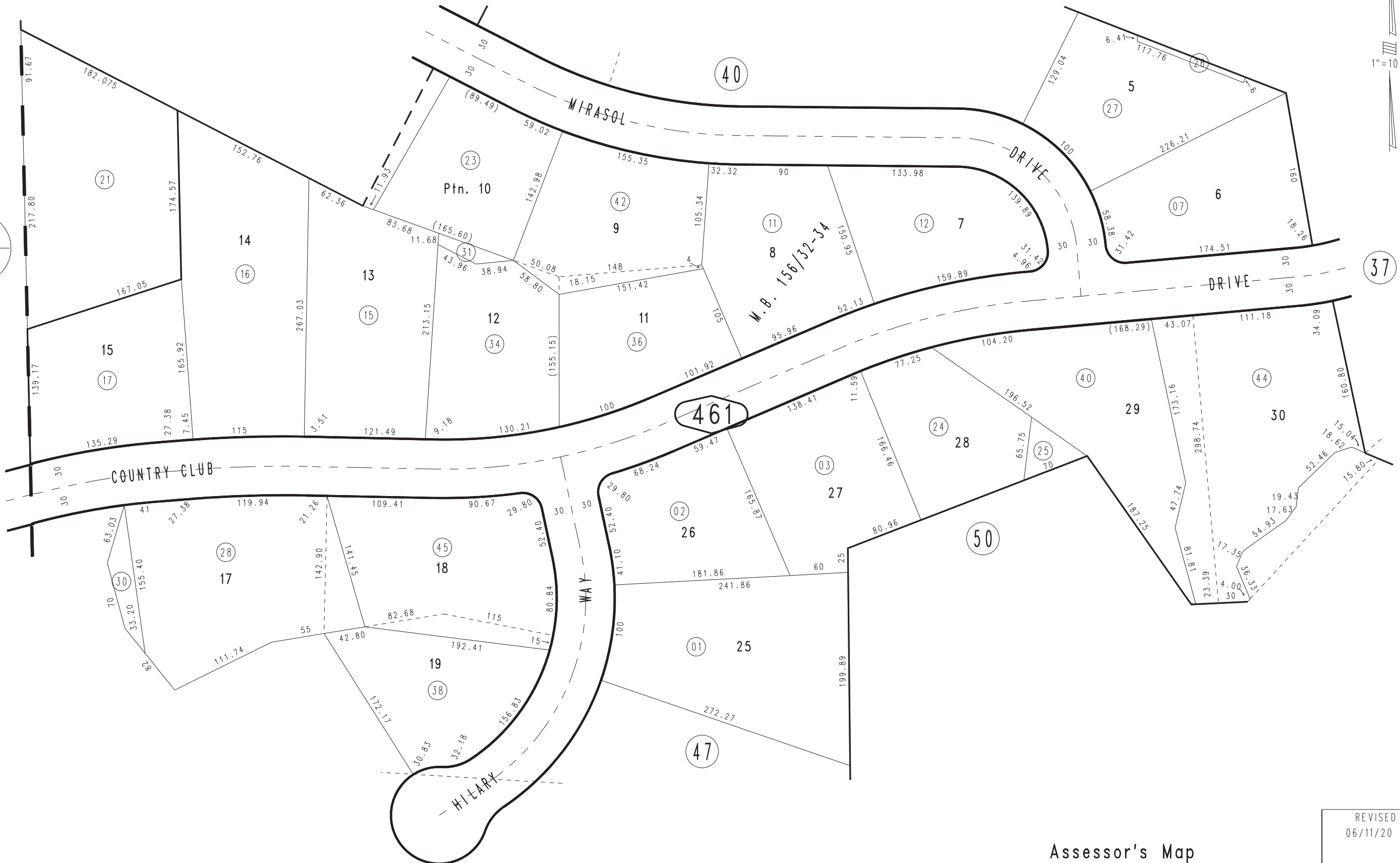
Ptn. S.W.1/4, S.W.1/4, Fract'l Sec. 6, T.2 S., R.2 W., S.B.M.

City of Redlands
Tax Rate Area
5011

0300-46



0176
19



OCT. 1979

Ptn. Tract No. 9178, M.B. 148/62-64, Amending Map 156/32-34

Assessor's Map
Book 0300 Page 46
San Bernardino County

REVISED
06/11/20 KC