

THIS MAP IS FOR THE PURPOSE OF AD VALOREM TAXATION ONLY.

W.1/2 Sec. 8 & Ptn. W.1/2 Sec. 5, T.2 S.,R.2 W. S.B.M.

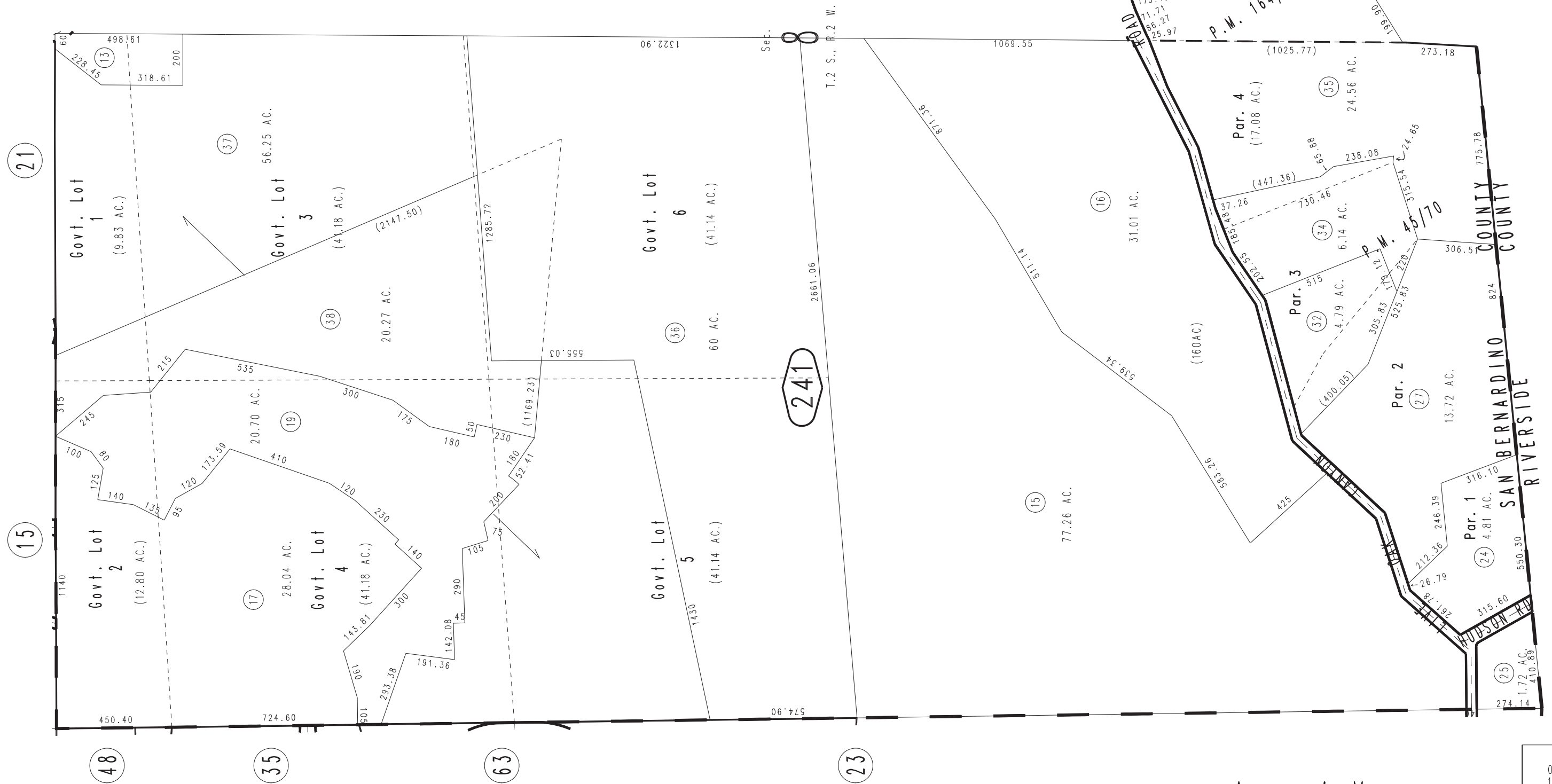
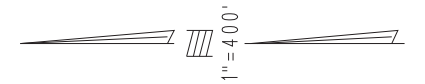
City of Redlands
Tax Rate Area
5050

0300-24



0301
14

0301
19



JAN. 1953

Ptn. Parcel Map No. 14132, P.M. 164/8-10
Parcel Map No. 4930, P.M. 45/70

Assessor's Map
Book 0300 Page 24
San Bernardino County

REVISED
06/20/14 RU
11/13/14 RM