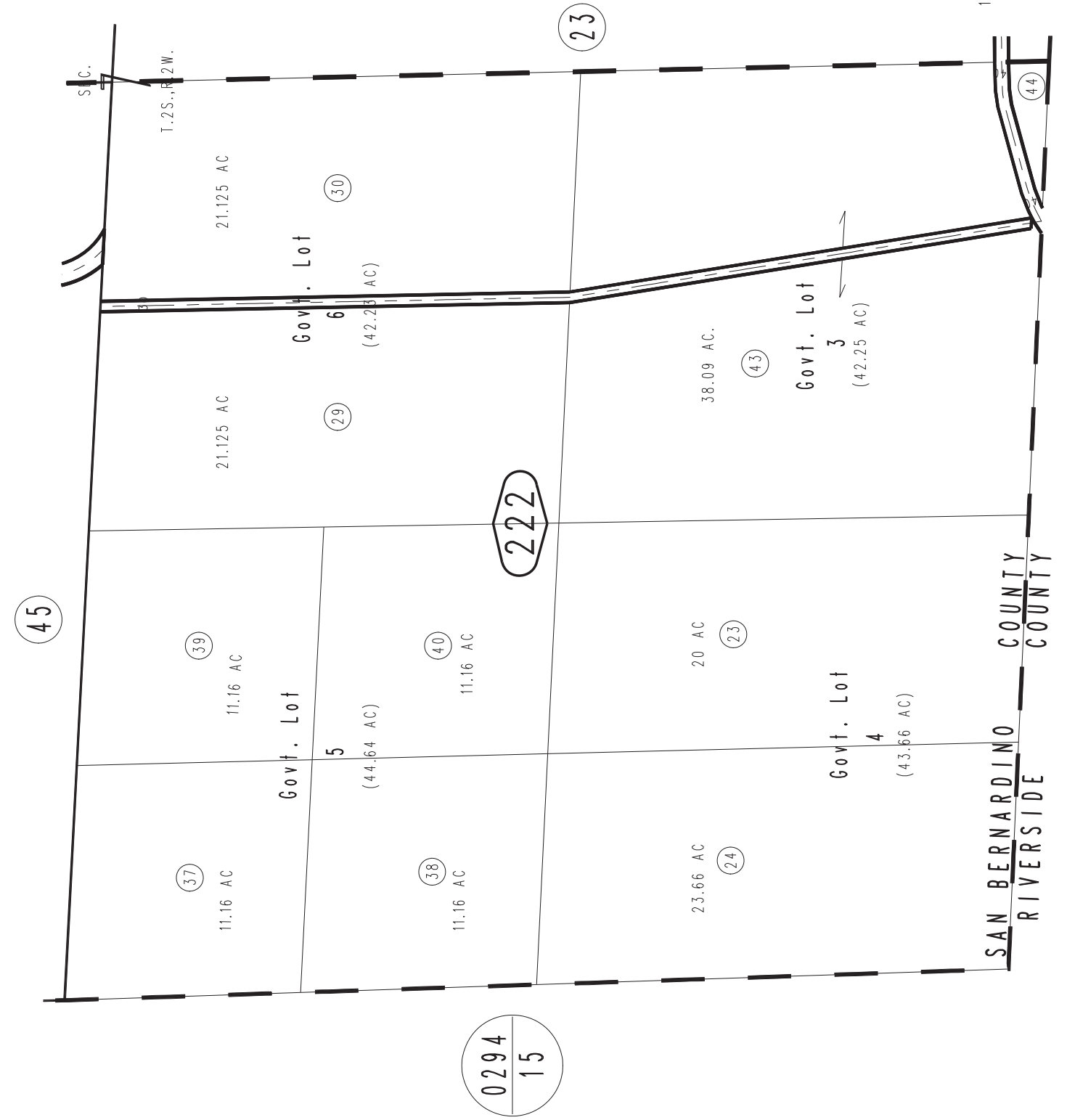
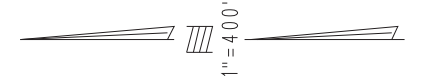


THIS MAP IS FOR THE PURPOSE
OF AD VALOREM TAXATION ONLY.

S.W.1/4, Sec. 7, T.2 S., R.2 W., S.B.B.& M.

City of Redlands
Tax Rate Area
5011

0300-22



0294
15

JAN. 1953

Assessor's Map
Book 0300 Page 22
San Bernardino County

REVISED
09/03/19 KA