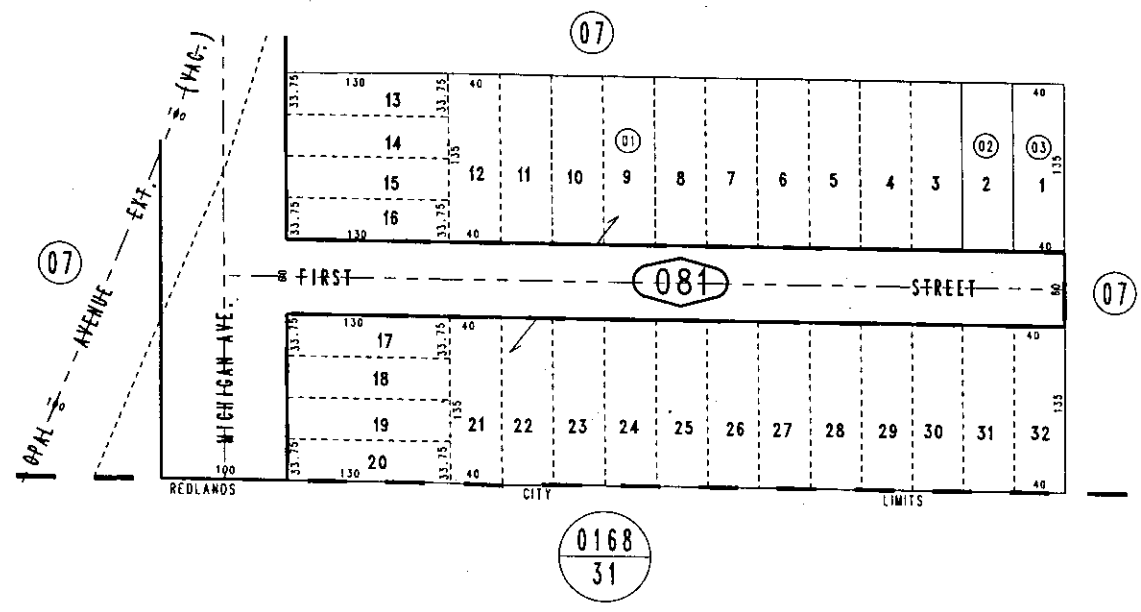
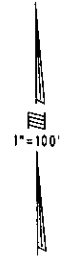


THIS MAP IS FOR THE PURPOSE  
OF AD VALOREM TAXATION ONLY.

# Resub. Lot 16, Chicago Sub. To Redlands M.B.16/56

City of Highland  
Tax Rate Area  
18146

0297-08



October 2003

Assessor's Map  
Book 0297 Page 08  
San Bernardino County

REVISED