

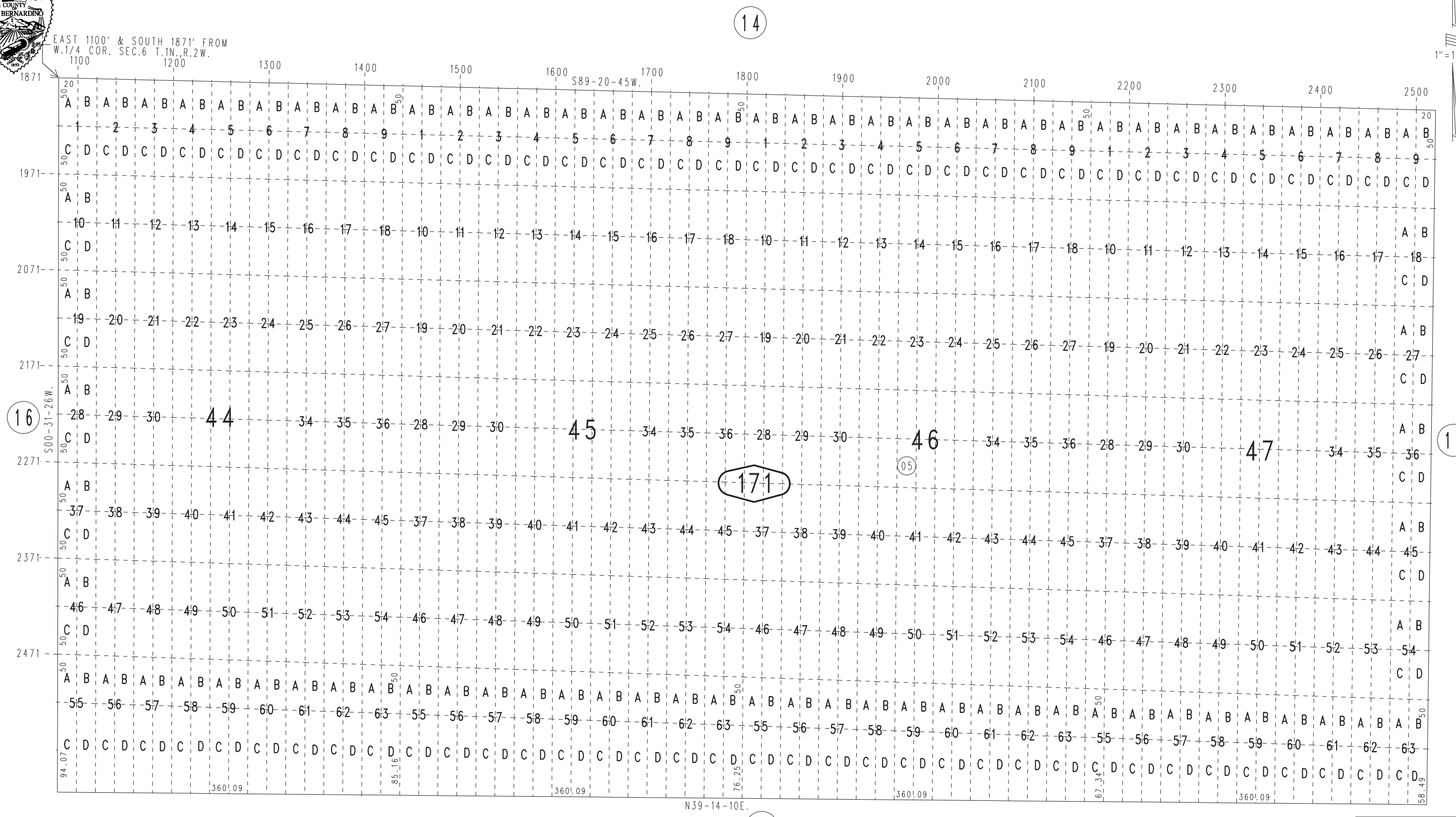
THIS MAP IS FOR THE PURPOSE OF AD VALOREM TAXATION ONLY.

Ptn. Assessor's Map No. 10, O.M. 1/16-19
Ptn. Sec.6., T.1N.,R.2W., S.B.B.&M.

Rim of The World Unified 0296-17
Tax Rate Area
105029



EAST 1100' & SOUTH 1871' FROM
W.1/4 COR. SEC.6 T.1N.,R.2W.



REVISED