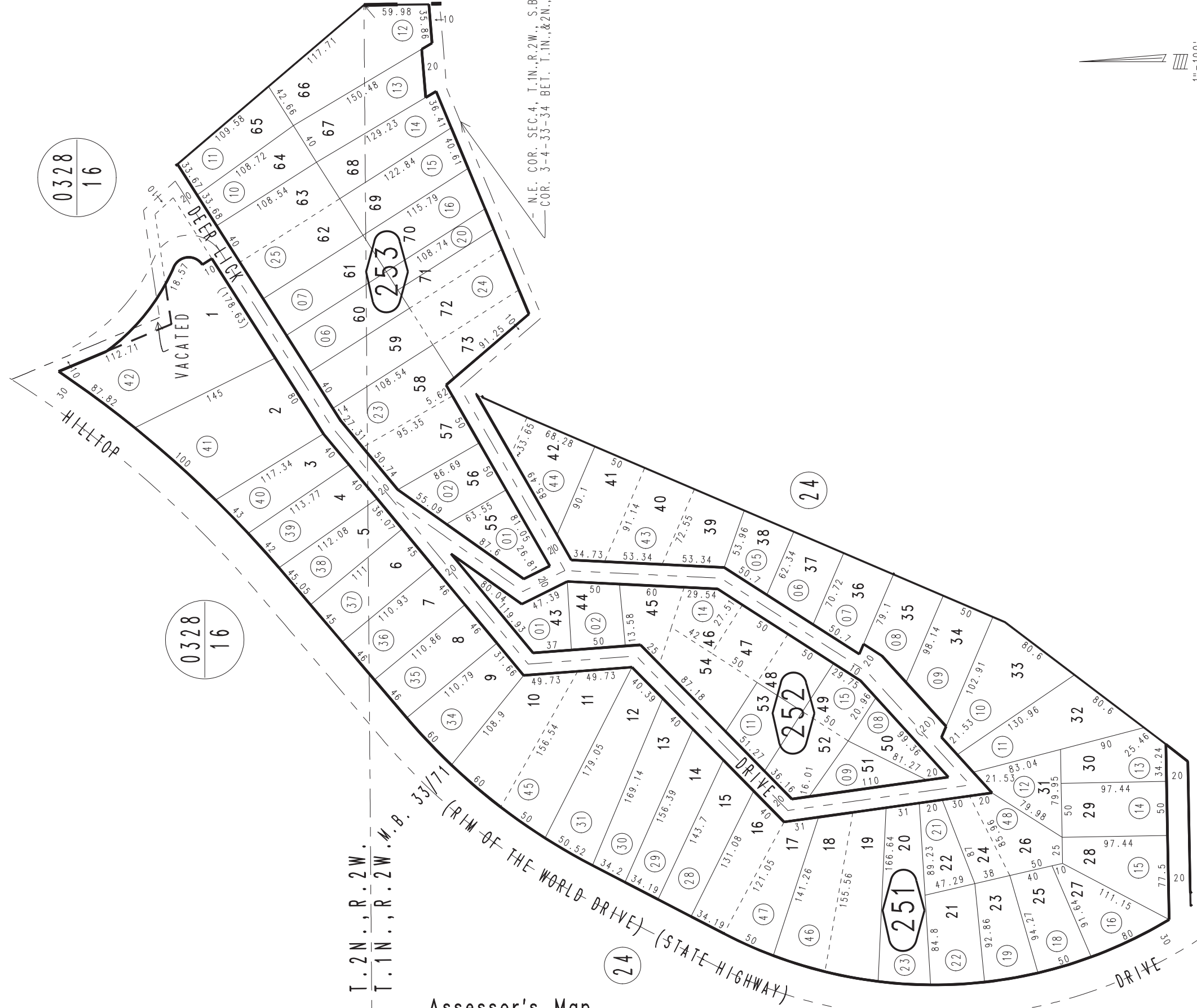


THIS MAP IS FOR THE PURPOSE
OF AD VALOREM TAXATION ONLY.



Ptn. Sec.4, T.1N.,R.2W. & Ptn. Sec.33, T.2N.,R.2W., S.B.B.&M.

Rim of The World Unified Tax Rate Area
105002 0295-25



N.E. COR. SEC.4, T.1N.,R.2W., S.B.B.&M.
COR. 3-4-33-34 BET. T.1N.,&2N.,R.2W.

T.2N., R.2W.
T.1N., R.2W. M.B. 33/71

Assessor's Map
Book 0295 Page 25
San Bernardino County

April 2005

Deer Lick Springs Tract, Tract No. 2359, M.B. 33/71

REVISED
04/06/16 KC