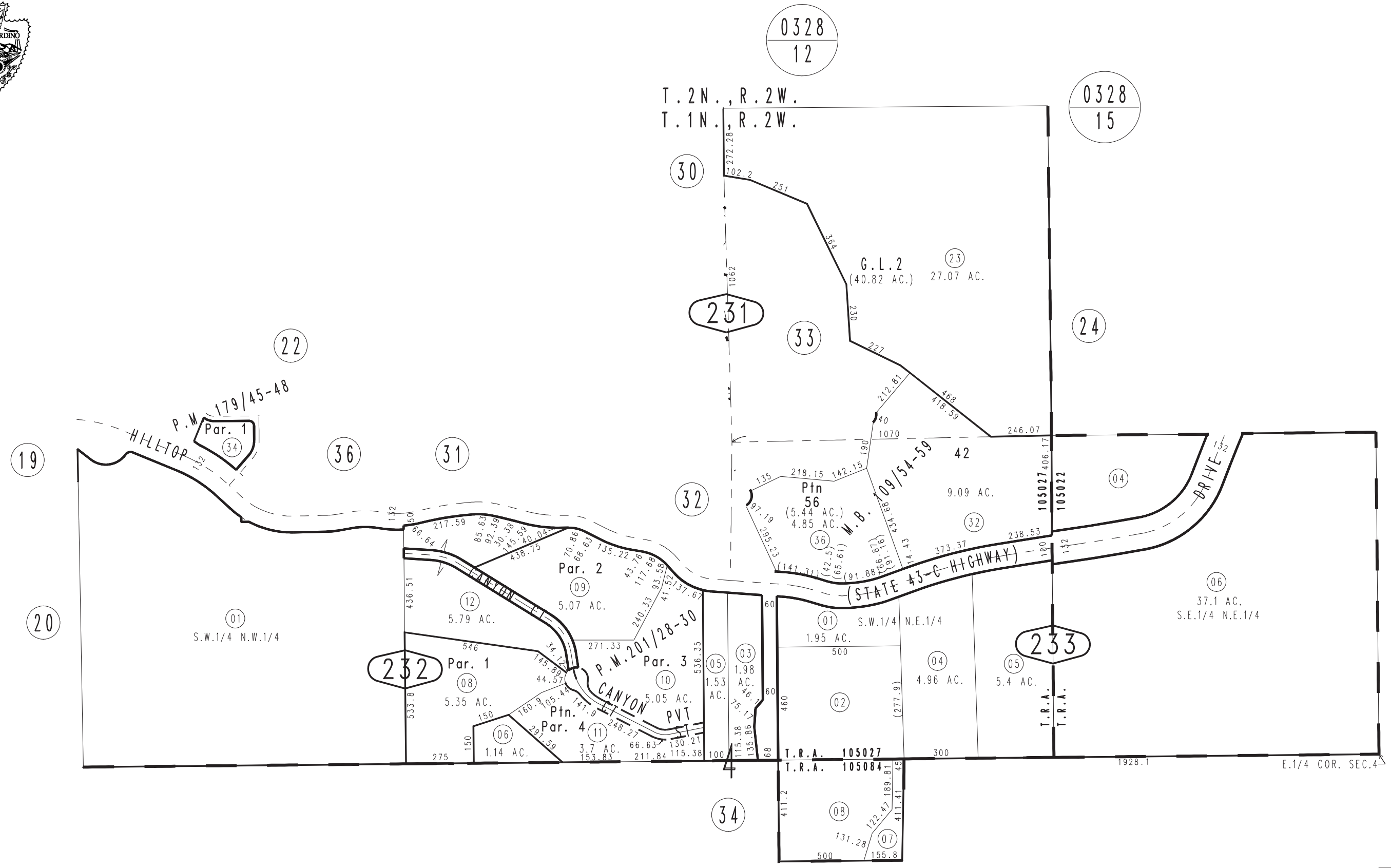
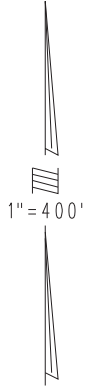


THIS MAP IS FOR THE PURPOSE OF AD VALOREM TAXATION ONLY.



Ptn. Parcel Map No. 14694, P.M. 201/28-30
Parcel Map No. 14672, P.M. 179/45-48
Ptn. Tract No. 7568, M.B. 109/54-59

April 2005

Assessor's Map
Book 0295 Page 23
San Bernardino County

REVISED
09/13/24 KC