

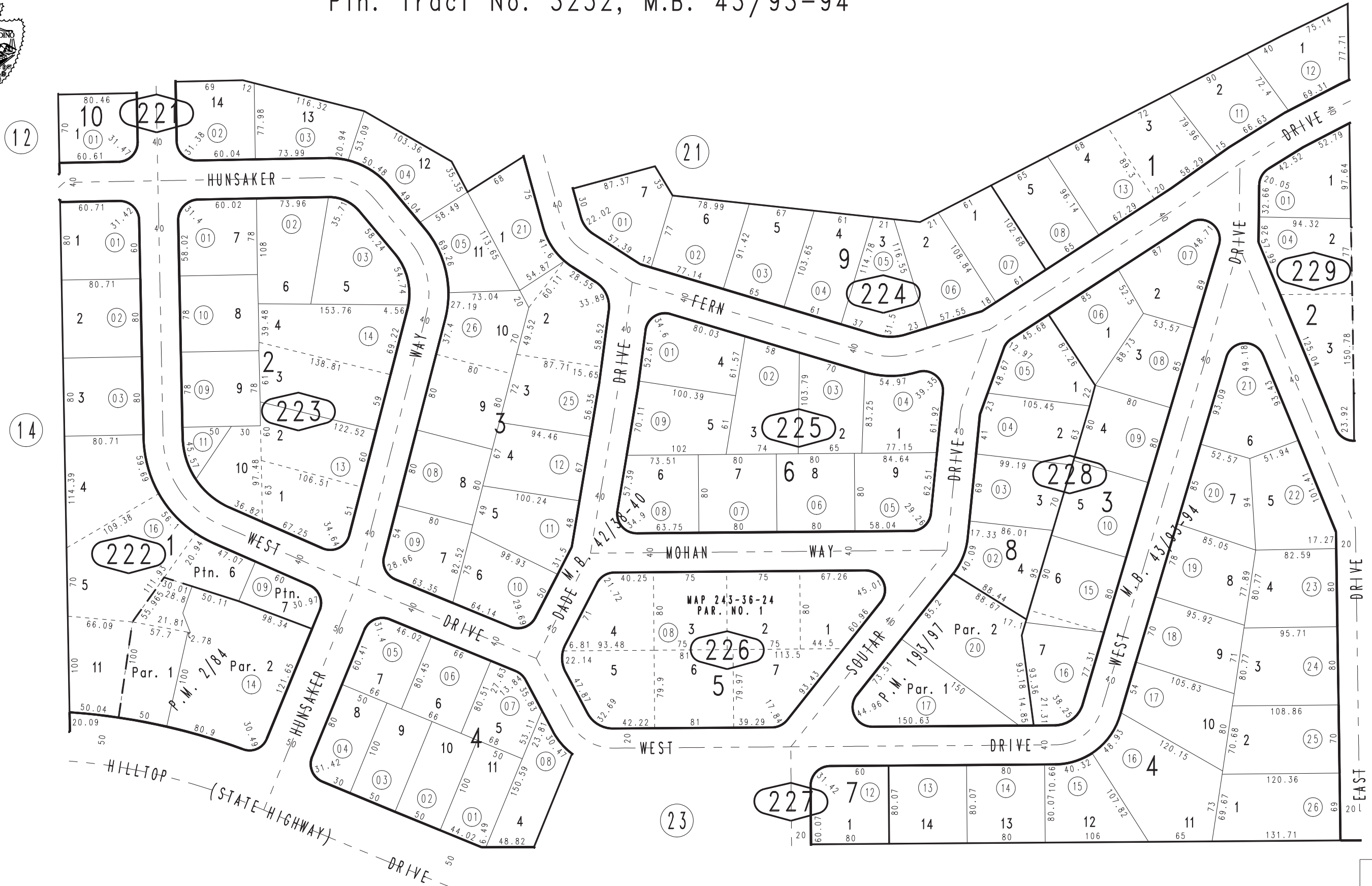
THIS MAP IS FOR THE PURPOSE OF AD VALOREM TAXATION ONLY.



Ptn. Sec.4, T.1N.,R.2W., S.B.B.&M.  
Tract No. 3009, M.B. 42/38-40  
Ptn. Tract No. 3252, M.B. 43/93-94

Rim of The World Unified  
Tax Rate Area  
105027

0295-22



Parcel Map No. 15734, P.M. 193/97  
Parcel Map No. 234, P.M. 2/84

April 2005

Assessor's Map  
Book 0295 Page 22  
San Bernardino County

REVISED  
06/22/20 KC