

THIS MAP IS FOR THE PURPOSE  
OF AD VALOREM TAXATION ONLY.

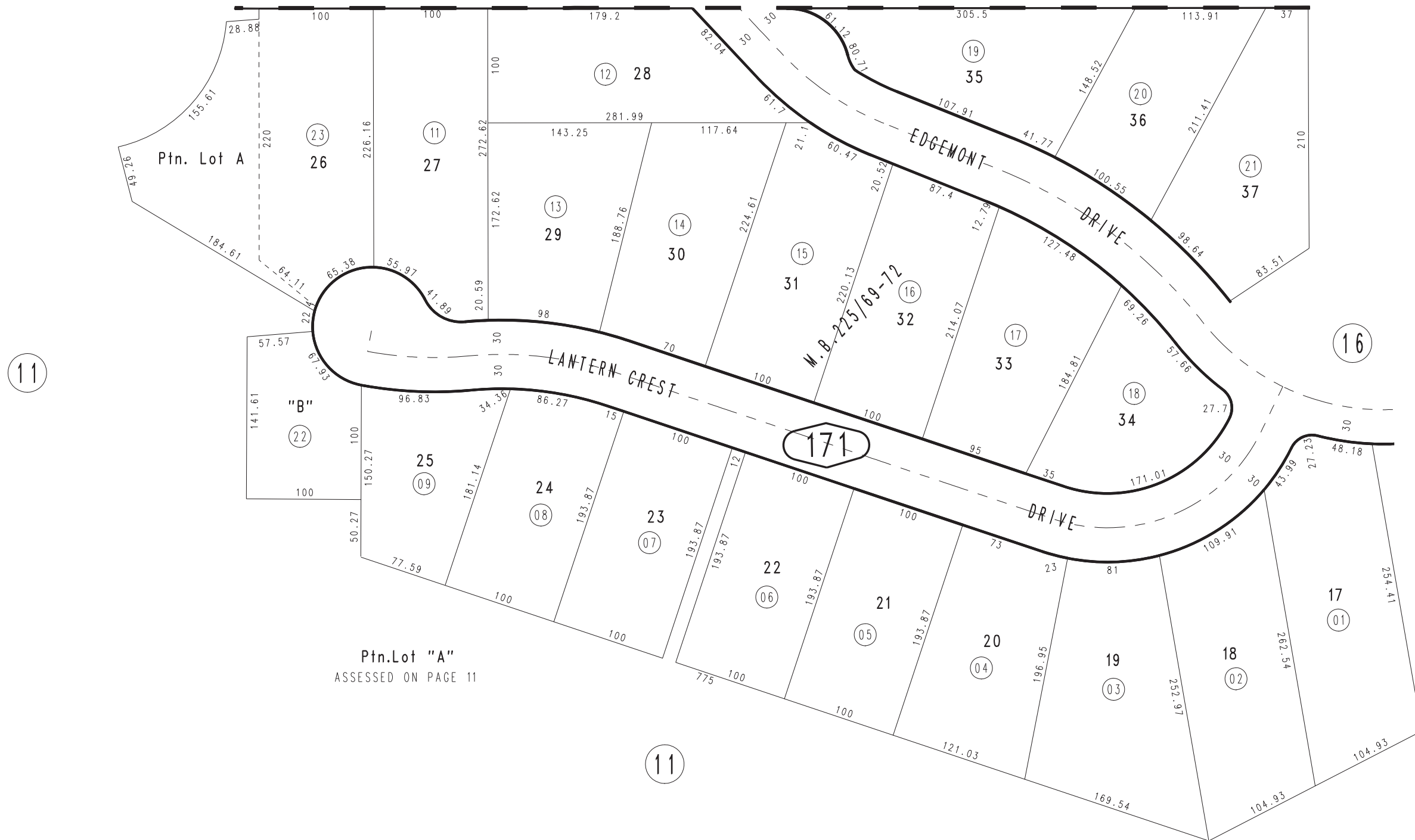
Ptn. Tract No. 13103, M.B.223/58-61  
Amending Map, M.B. 225/69-72

City of Redlands  
Tax Rate Area  
5023

0294-17



0176  
14



Ptn. Lot A

"B"

Ptn.Lot "A"  
ASSESSED ON PAGE 11