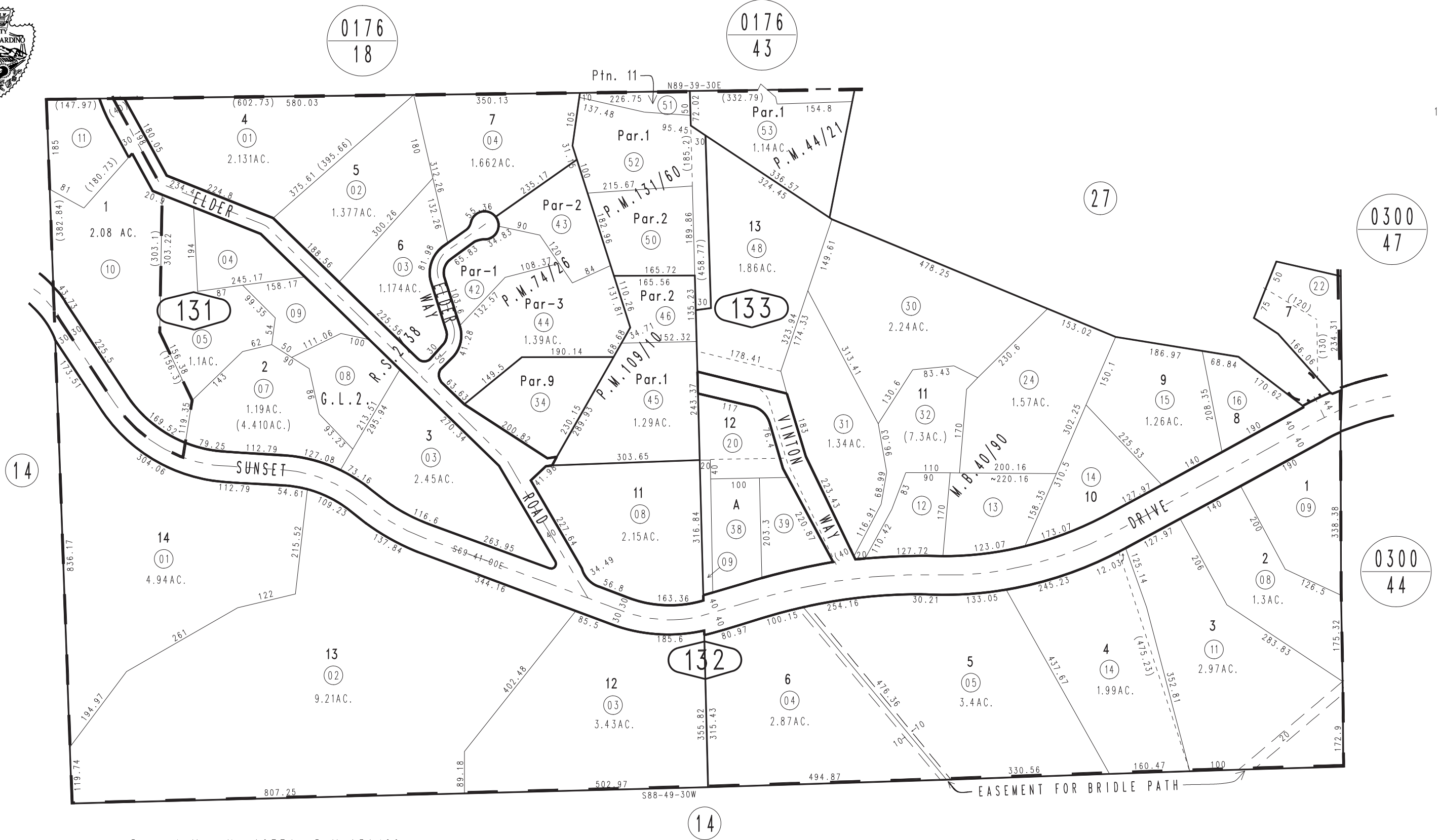


THIS MAP IS FOR THE PURPOSE
OF AD VALOREM TAXATION ONLY.

N.1/2, N.E.1/4 Sec.12, T.2S.,R.3W., S.B.B.&M.

City of Redlands
Tax Rate Area
5023

0294-13



Parcel Map No.10774, P.M.131/60
Parcel Map No.10186, P.M.109/10
Parcel Map No.7253, P.M.74/26
Ptn. Parcel Map No.4770, P.M.44/21
Country Club Heights R.S.2/38
Country Club Heights Tract No. 2977 M.B.40/90

October 2003

Assessor's Map
Book 0294 Page 13
San Bernardino County

REVISED
01/07/15 RM-MC