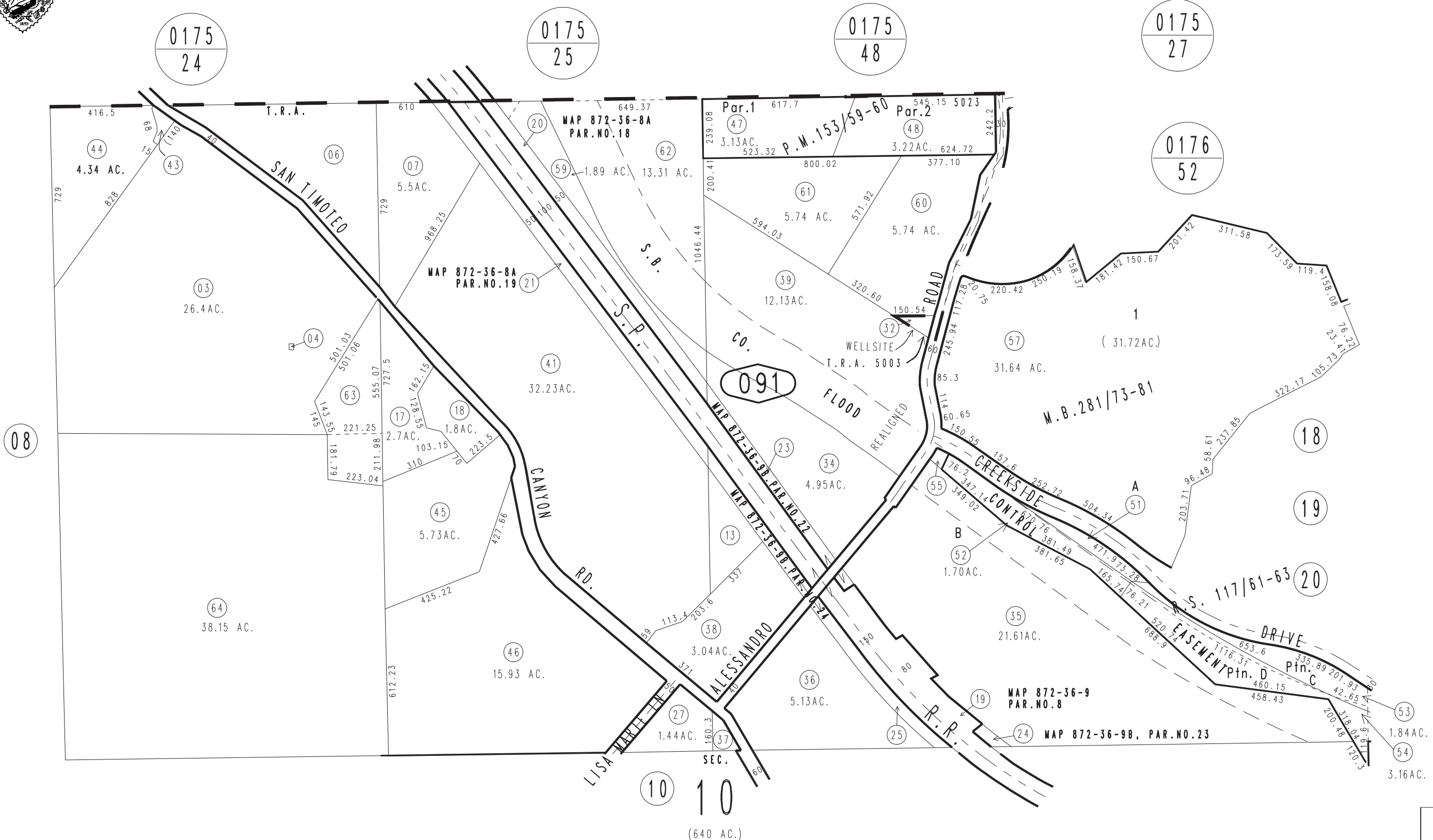


THIS MAP IS FOR THE PURPOSE OF AD VALOREM TAXATION ONLY.

N.1/2 Sec.10 T.2S.,R.3W., S.B.B.&M

City of Redlands
Tax Rate Area
5003,5023

0294-09



October 2003

Record of Survey 117/61-63
Ptn. Tract No.14790-2, M.B.281/73-81
Parcel Map No.11189, P.M.153/59-60

Assessor's Map
Book 0294 Page 09
San Bernardino County

REVISED
11/06/17 KA