

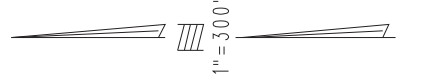
THIS MAP IS FOR THE PURPOSE
OF AD VALOREM TAXATION ONLY.

Ptn. W.1/2 Sec.4 T.2S.,R.3W., S.B.B.&M

0175
22

City of Redlands
Tax Rate Area
5000,5023

0294-05



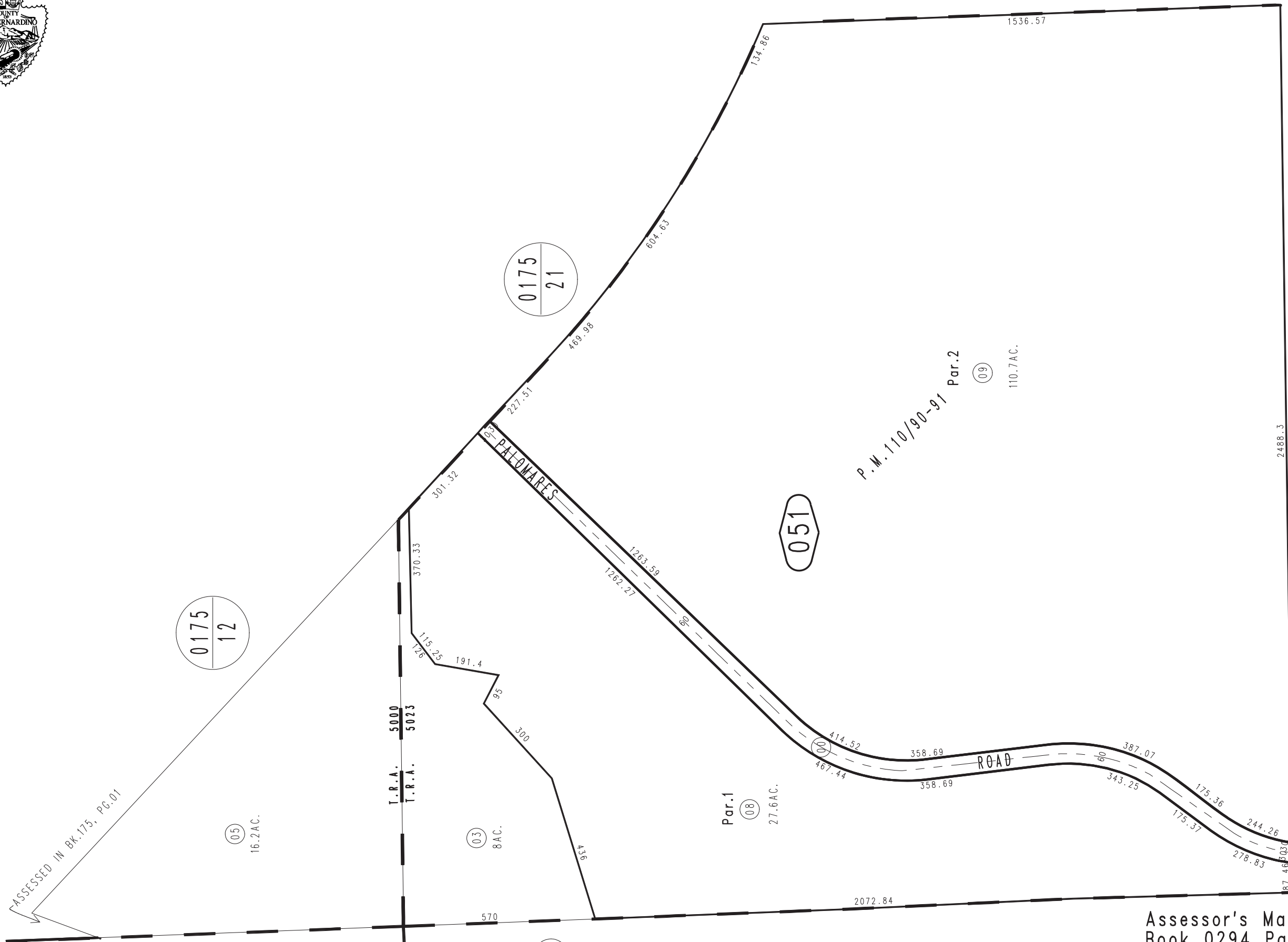
October 2003

Parcel Map No.10033,P.M.110/90-91

04

Assessor's Map
Book 0294 Page 05
San Bernardino County

REVISED
09/11/09 GW



0175
12

0175
21

051

07

05

03

08

09

ASSESSED IN BK.175, PG.01

T.R.A. 5000
T.R.A. 5023

PALOMARES

P.M.110/90-91 Par.2

ROAD

S.W.COR. SEC.4
T.2S., R.3W.

570

436

300

191.4

115.25

370.33

301.32

227.51

469.98

604.63

134.86

1536.57

2488.3

87.46

278.83

175.37

175.36

343.25

387.07

358.69

414.52

467.44

27.6AC.

2072.84

27.6AC.

Par.1

1262.27

1263.59

90

90

90

90

90

90

90

90

90

90

90

90

90

90

87.46

278.83

175.37

175.36

343.25

387.07

358.69

414.52

467.44

27.6AC.

2072.84

27.6AC.

Par.1

1262.27

1263.59

90

90

90

90

90

90

90

90

90

90

90

90

90

90

87.46

278.83

175.37

175.36

343.25

387.07

358.69

414.52

467.44

27.6AC.

2072.84

27.6AC.

Par.1

1262.27

1263.59

90

90

90

90

90

90

90

90

90

90

90

90

90

90

87.46

278.83

175.37

175.36

343.25

387.07

358.69

414.52

467.44

27.6AC.

2072.84

27.6AC.

Par.1

1262.27

1263.59

90

90

90

90

90

90

90

90

90

90

90

90

90

90

87.46

278.83

175.37

175.36

343.25

387.07

358.69

414.52

467.44

27.6AC.

2072.84

27.6AC.

Par.1

1262.27

1263.59

90

90

90

90

90

90

90

90

90

90

90

90

90

90

87.46

278.83

175.37

175.36

343.25

387.07

358.69

414.52

467.44

27.6AC.

2072.84

27.6AC.

Par.1

1262.27

1263.59

90

90

90

90

90

90

90

90

90

90

90

90

90

90

87.46

278.83

175.37

175.36

343.25

387.07

358.69

414.52

467.44

27.6AC.

2072.84

27.6AC.

Par.1

1262.27

1263.59

90

90

90

90

90

90

90

90

90

90

90

90

90

90

87.46

278.83

175.37

175.36

343.25

387.07

358.69

414.52

467.44

27.6AC.

2072.84

27.6AC.

Par.1

1262.27

1263.59

90

90

90

90

90

90

90

90

90

90

90

90

90

90

87.46

278.83

175.37

175.36

343.25

387.07

358.69

414.52

467.44

27.6AC.

2072.84

27.6AC.

Par.1

1262.27

1263.59

90

90

90

90

90

90

90

90

90

90

90

90

90

90

87.46

278.83

175.37

175.36

343.25

387.07

358.69

414.52

467.44

27.6AC.

2072.84

27.6AC.

Par.1

1262.27

1263.59

90

90

90

90

90