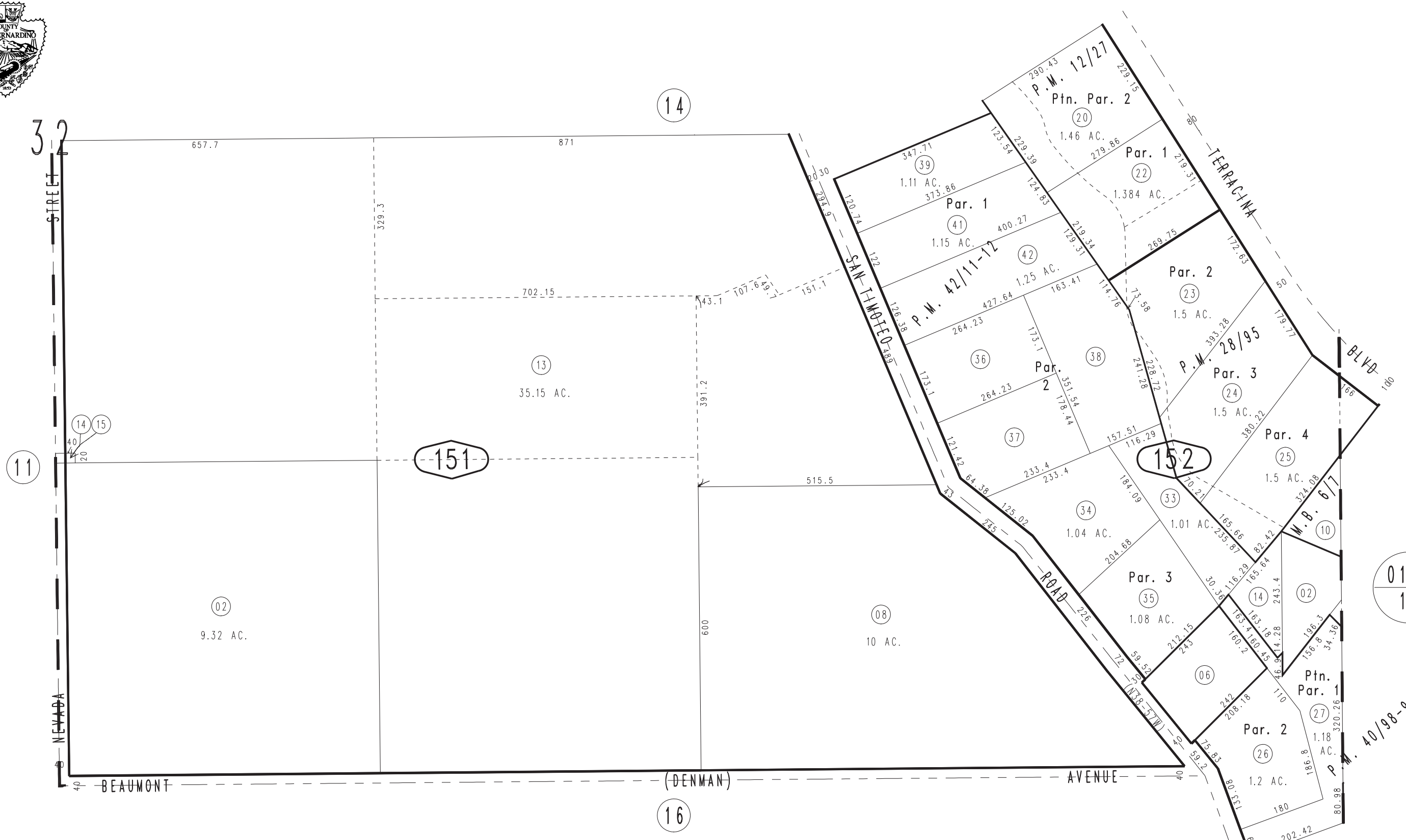


THIS MAP IS FOR THE PURPOSE
OF AD VALOREM TAXATION ONLY.

Ptn. N.1/2 S.E.1/4 Sec.32, T.1S.,R.3W., S.B.B.&M.

City of Redlands
Tax Rate Area
5010

0293-15



Ptn. Parcel Map No. 4322, P.M. 42/11-12
Ptn. Parcel Map No. 4223, P.M. 40/98-99
Parcel Map No. 3196, P.M. 28/95
Ptn. Parcel Map No. 1410, P.M. 12/27
Ptn. Terracina Add. No. 1, M.B. 6/7

Assessor's Map
Book 0293 Page 15
San Bernardino County

REVISED
03/01/11 KA-MC