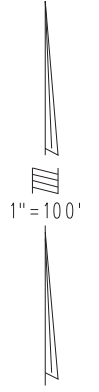
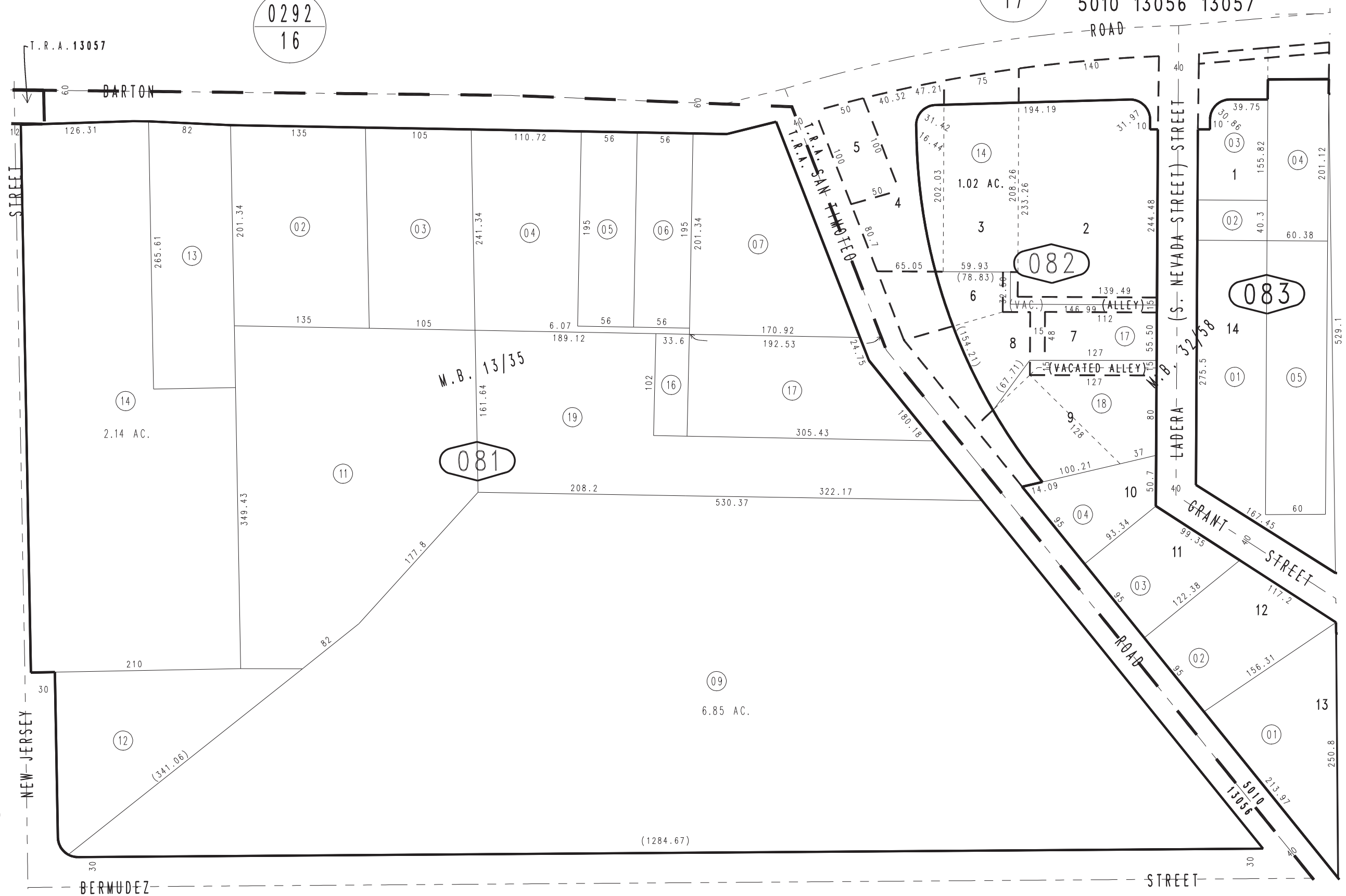


THIS MAP IS FOR THE PURPOSE
OF AD VALOREM TAXATION ONLY.

Ptn. N.E.1/4 N.W.1/4 Sec.32, T.1S.,R.3.W., S.B.B.&M.

City of Redlands
Redlands Unified
Tax Rate Area
5010 13056 13057

0293-08



February 2004

Ptn. Mrs. Bermudez Survey, M.B. 13/35
Trails-End Terrace, Tr. No. 2267, M.B. 32/58

Assessor's Map
Book 0293 Page 08
San Bernardino County

REVISED
05/08/24 KC
08/06/24 RU
08/14/24 RU
09/10/24 RU