

THIS MAP IS FOR THE PURPOSE  
OF AD VALOREM TAXATION ONLY.

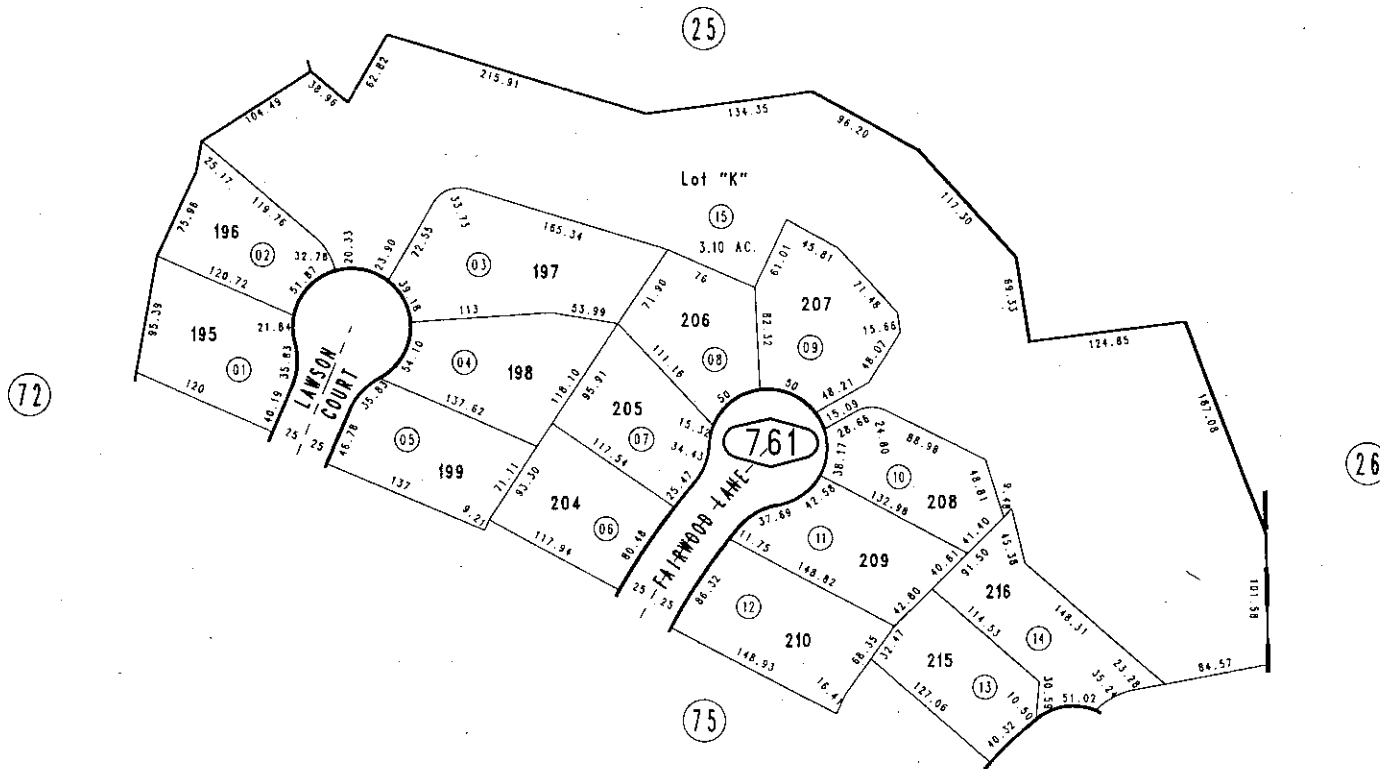
Ptn. Tract No.15985-4, M.B. 292/38-42

City of Highland  
Tax Rate Area  
18001

0288-76



1"=100'



November 2003 KWP

Ptn. S1/2, Sec. 35  
T.1N., R.3W.

Assessor's Map  
Book 0288 Page 76  
San Bernardino County

REVISED