

THIS MAP IS FOR THE PURPOSE  
OF AD VALOREM TAXATION ONLY.

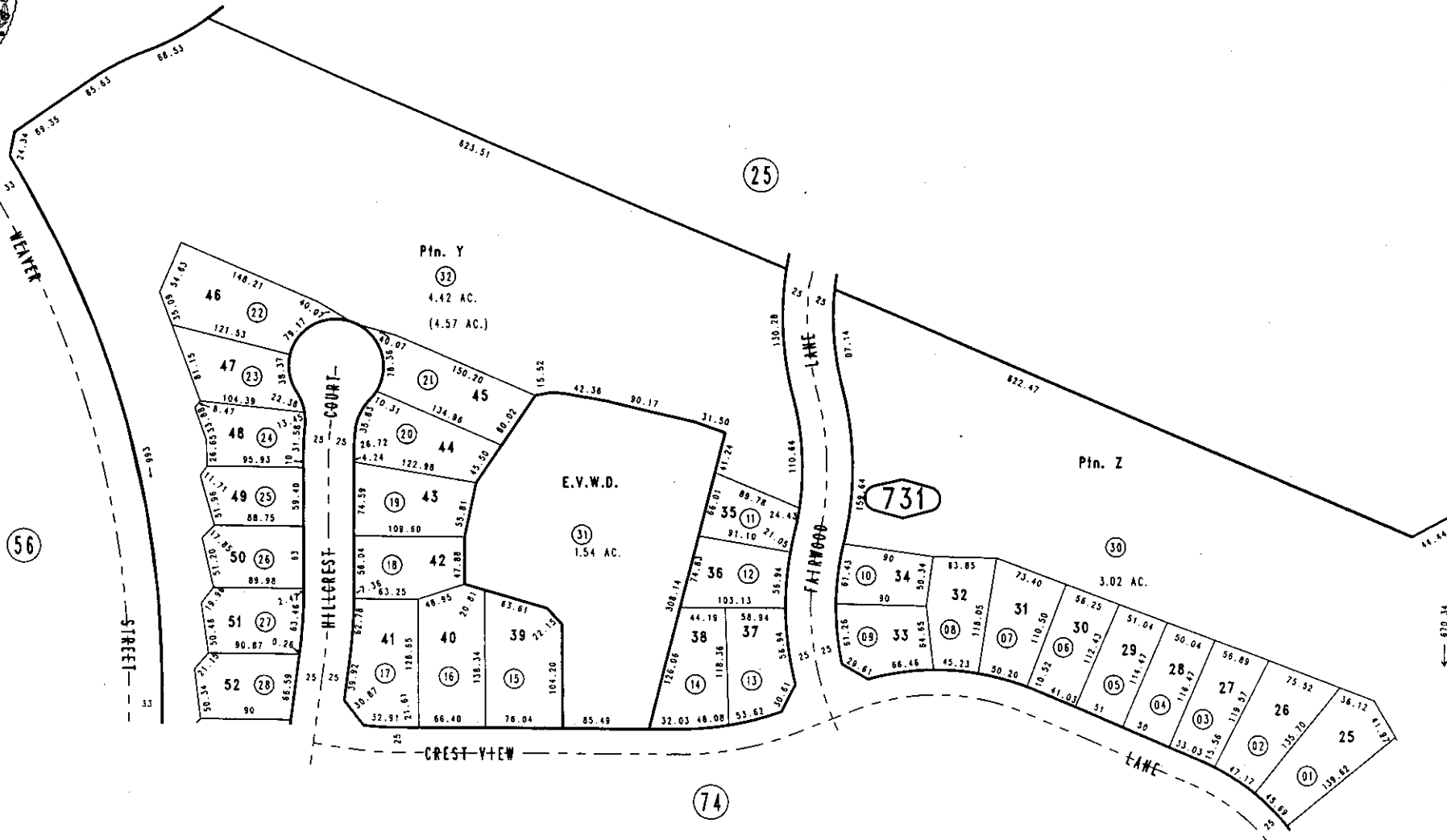
Ptn. Tract 16068, M.B.289/59-62

City of Highland  
Tax Rate Area  
18001

0288-73



1"=100'



March 2003

Ptn. SE1/4, Sec. 35  
T.1N., R.3W.

Assessor's Map  
Book 0288 Page 73  
San Bernardino County

REVISED  
03-12-03 KWP  
02/11/2004 RLU