

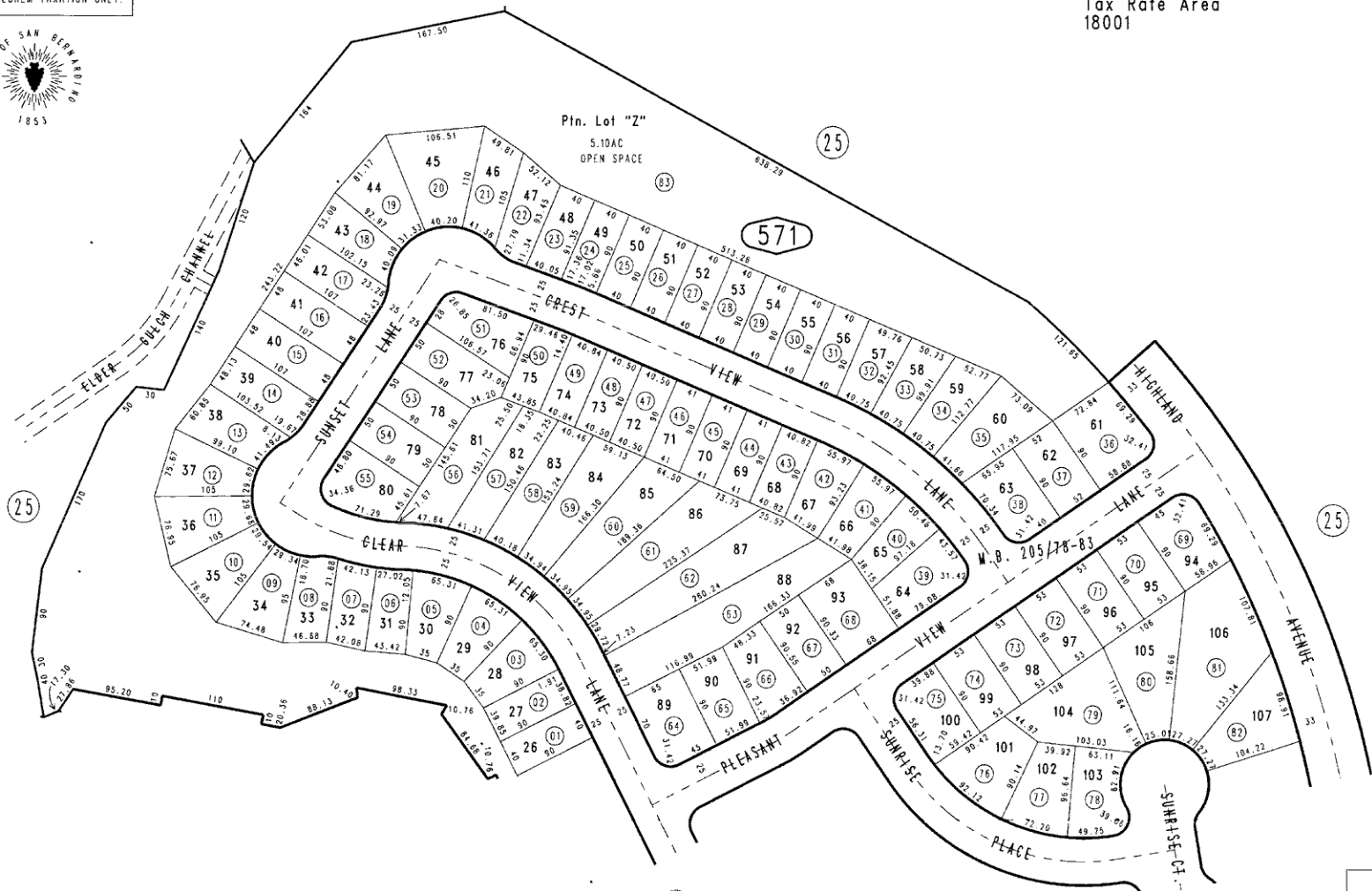
THIS MAP IS FOR THE PURPOSE
OF AD VALOREM TAXATION ONLY.



Ptn. Tract No. 13469, M.B. 205/78-83

City of Highland
Tax Rate Area
18001

0288-57



APRIL 1996

Ptn. S.1/2, Sec. 35
T.1N., R.3W.

Assessor's Map
Book 0288 Page 57
San Bernardino County

REVISED