

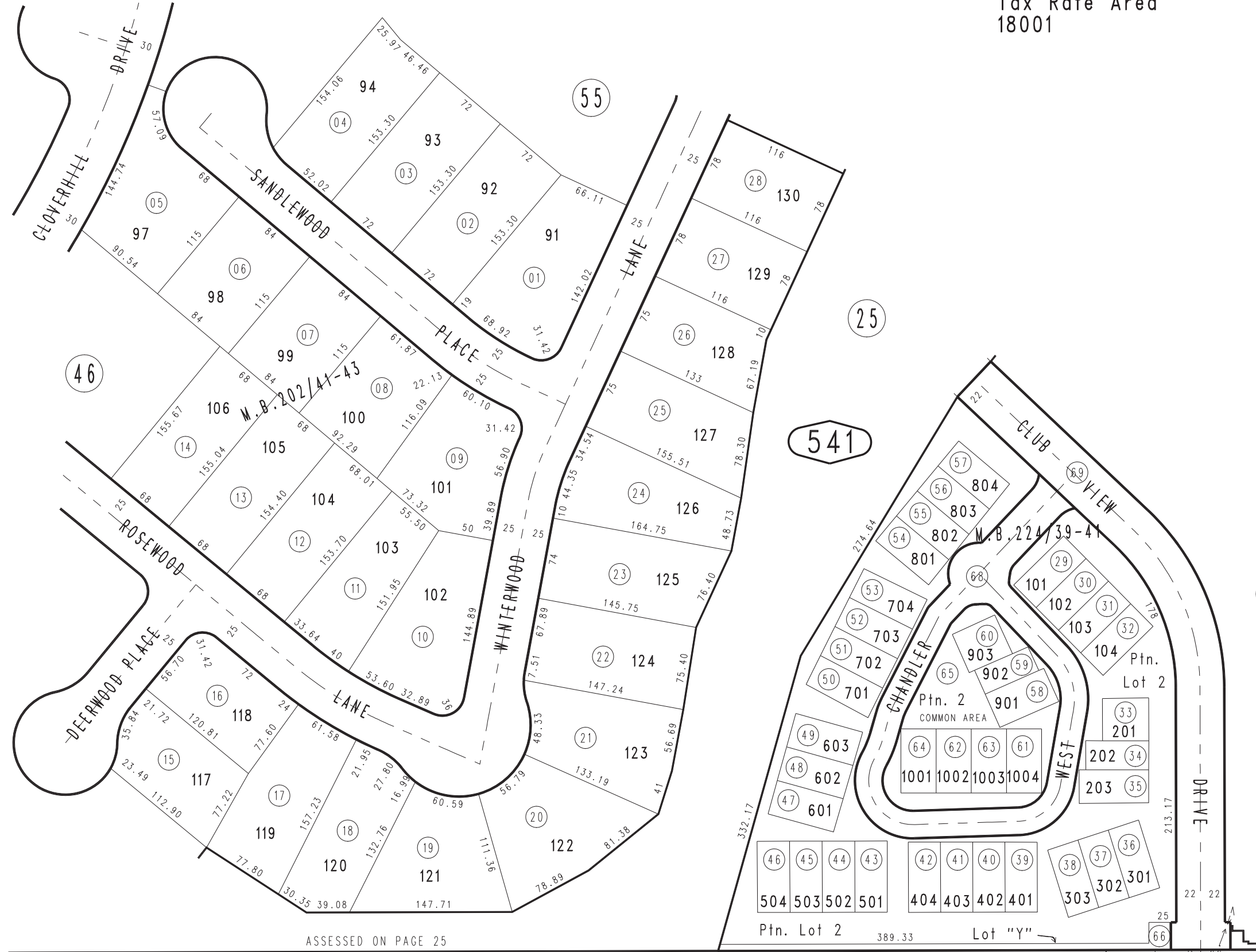
THIS MAP IS FOR THE PURPOSE OF AD VALOREM TAXATION ONLY.



Ptn. Tract No. 12307, M.B., 202/41-43

City of Highland
Tax Rate Area
18001

0288-54



ASSESSED ON PAGE 25

Assessed on Pgl 66

52 BASELINE AVENUE 52

1210
05

NOV. 1995

Condo. Plan 91-046686, 91-074296
Ptn. Tract No. 13551, M.B. 224/39-41

Ptn. S.W.1/4, Sec. 35
T.1N., R.3W.

Assessor's Map
Book 0288 Page 54
San Bernardino County

REVISED
02/02/09 RM
07/15/09 KA
10/22/12 KC