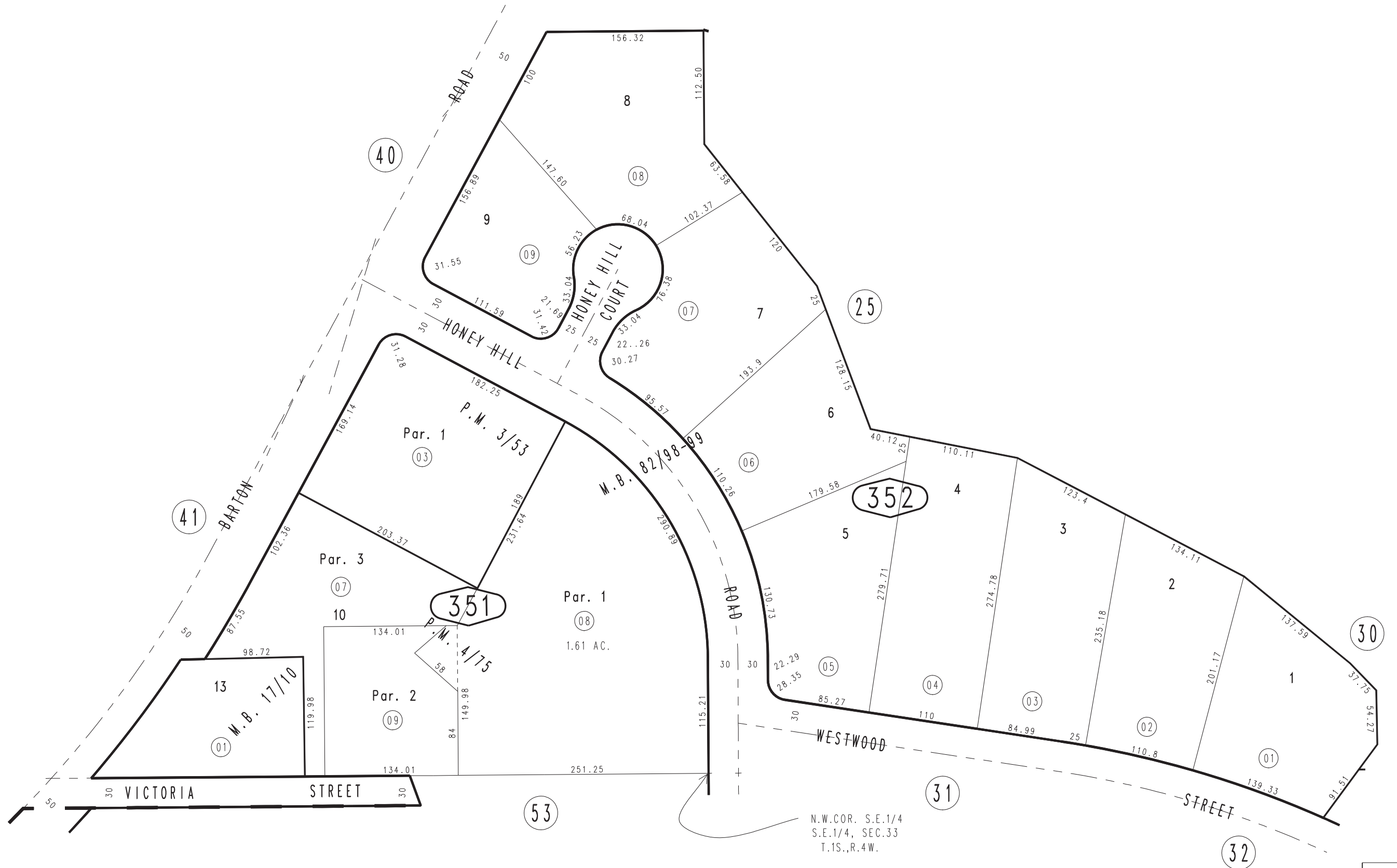


THIS MAP IS FOR THE PURPOSE
OF AD VALOREM TAXATION ONLY.

Tract No. 6471, M.B. 82/98-99
Ptn. S.E.1/4 Sec.33, T.1S.,R.4W., S.B.B.&M.

City of Grand Terrace 0276-35
Tax Rate Area
16001



Ptn. Vista Grande Tract, M.B. 17/10
Parcel Map No. 483, P.M. 4/75
Parcel Map No. 352, P.M. 3/53

December 2003

Assessor's Map
Book 0276 Page 35
San Bernardino County

REVISED