

THIS MAP IS FOR THE PURPOSE  
OF AD VALOREM TAXATION ONLY.



# Ptn. Rancho San Bernardino, M.B. 7/2

City of San Bernardino 0272-16  
Tax Rate Area  
7217 7231

0150  
15

0150  
16

0150  
29

0150  
27

0150  
30

0150  
28

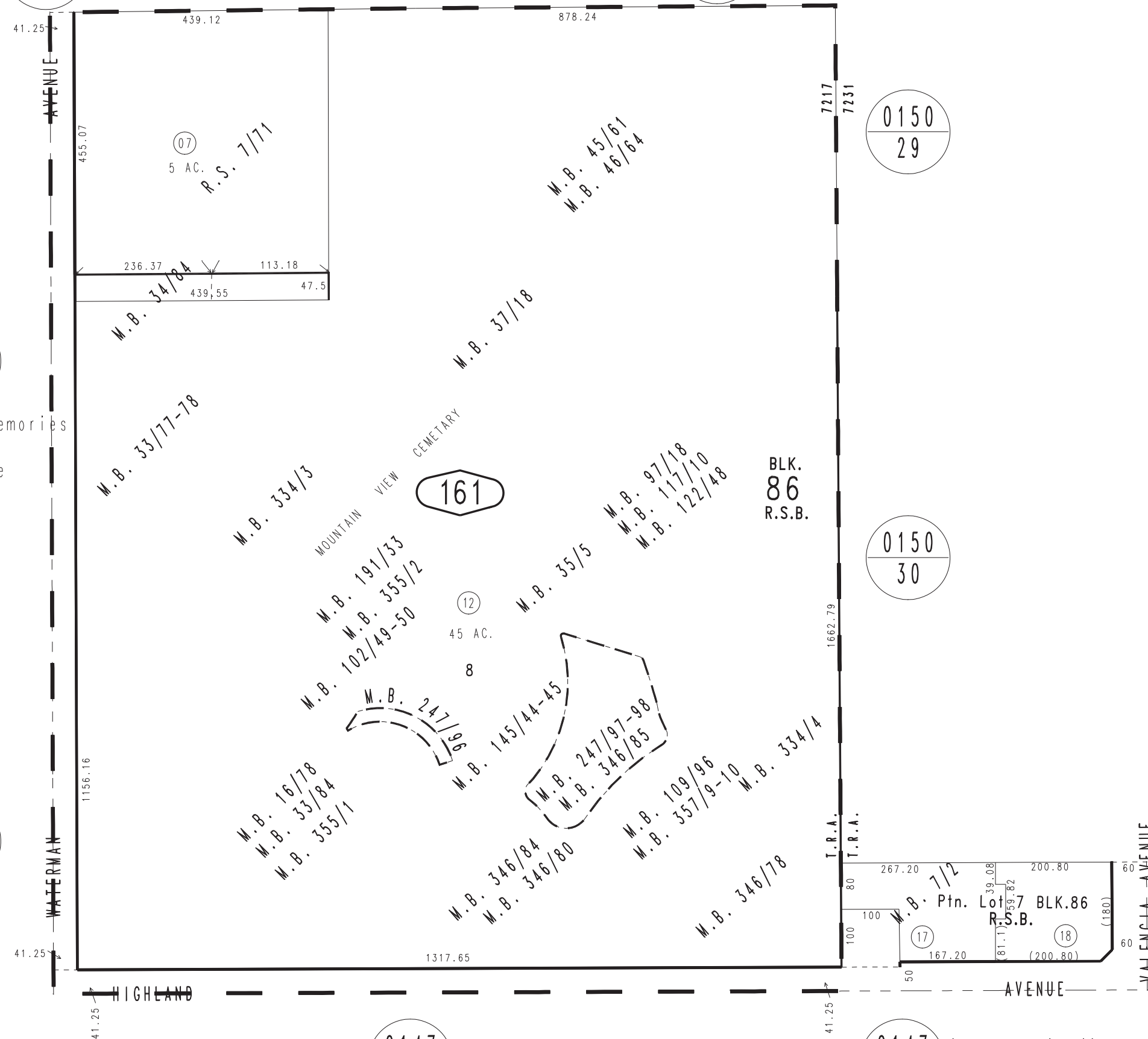
0150  
31

0147  
01

0147  
03

- Tract No. 20354, M.B. 357/9-10, Court of Memories
- Tract No. 20290, M.B. 355/2, Eternal Peace
- Tract No. 20292, M.B. 355/1, Garden of Hope
- Lawn T Private Estates
- Tract No. 20100, M.B. 346/85
- Harmony Estates 1 and 2
- Tract No. 20099, M.B. 346/84
- Poinsettia T Private Estates
- Tract No. 20095, M.B. 346/80
- Garden of Remembrance Ph. 2
- Tract No. 20094, M.B. 346/78-79
- Tract No. 18783, M.B. 334/4
- Tract No. 18776, M.B. 334/3
- Tract No. 15392, M.B. 247/97-98
- Tract No. 15296, M.B. 247/96
- Tract No. 13341, M.B. 191/33
- Tract No. 10665, M.B. 145/44-45
- Tract No. 8971, M.B. 122/48
- Tract No. 8717, M.B. 117/10
- Tract No. 8296, M.B. 109/96
- Tract No. 7912, M.B. 102/49-50
- Tract No. 7745, M.B. 97/18
- Tract No. 3356, M.B. 46/64
- Tract No. 3483, M.B. 45/61
- Lawn Q, M.B. 37/18
- Tract No. 2465, M.B. 35/5
- Blk. Eucalyptus, M.B. 34/84
- Tract No. 2360, M.B. 16/78, M.B. 33/84
- Tract No. 2299, M.B. 33/77-78

January 2005



Ptn. S.W.1/4, Sec. 26  
T.1N., R.4W.

Assessor's Map  
Book 0272 Page 16  
San Bernardino County

REVISED

- 08/18/20 RU
- 03/01/21 RU
- 04/15/21 GW
- 01/29/22 KA