

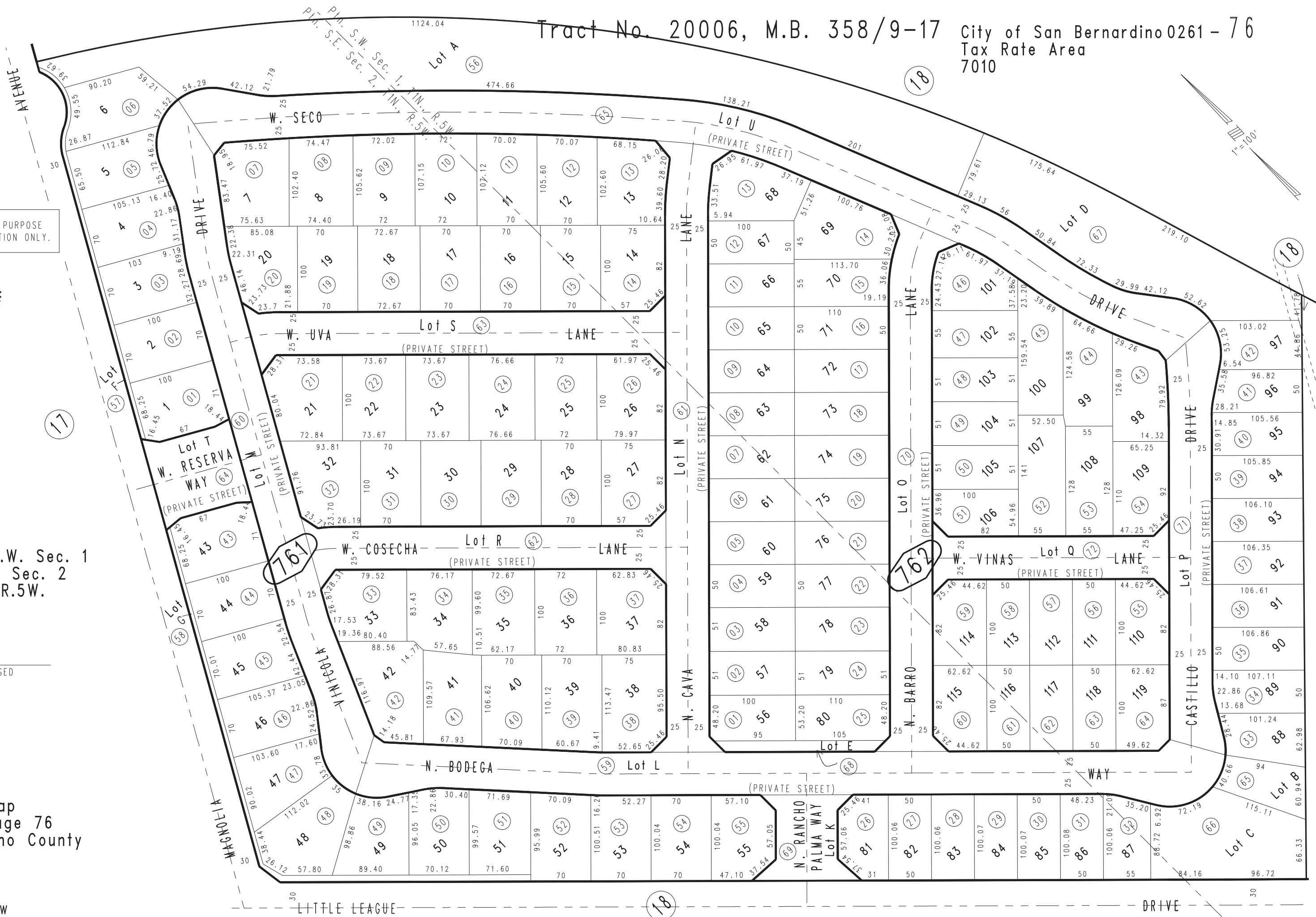
THIS MAP IS FOR THE PURPOSE  
OF AD VALOREM TAXATION ONLY.



Ptn. S.W. Sec. 1  
& S.E. Sec. 2  
T.1N., R.5W.

REVISED

Assessor's Map  
Book 0261 Page 76  
San Bernardino County



761

762

18

18

18

17