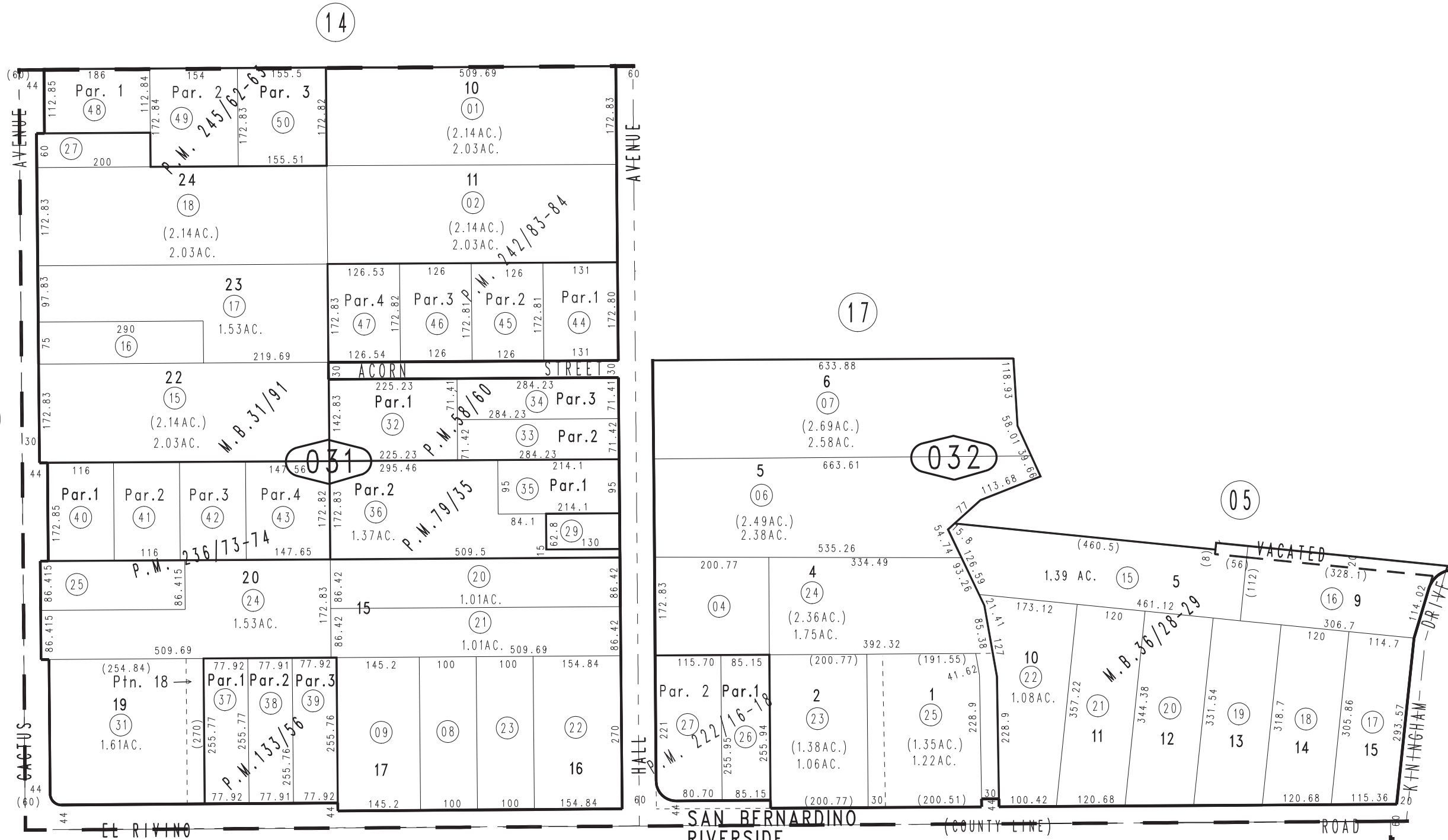


THIS MAP IS FOR THE PURPOSE OF AD VALOREM TAXATION ONLY.

Ptn. Rivino Orchards, Tract No. 2501, M.B. 36/28-29 Ptn. Tract No. 2206, M.B. 31/91

Colton Jt. Unified
Tax Rate Area
64031

0260-03



0259
18

17

14

05

032

031

05

- Parcel Map No. 19542, P.M. 245/62-63
- Parcel Map No. 19458, P.M. 242/83-84
- Parcel Map No. 17377, P.M. 236/73-74
- Parcel Map No. 16667, P.M. 222/16-18
- Parcel Map No. 8540, P.M.133/56
- Parcel Map No. 7728, P.M.79/35
- Parcel Map No. 6177, P.M.58/60

October 2003

Ptn. S.W.1/4, Sec. 35
T.1S., R.5W.

Assessor's Map
Book 0260 Page 03
San Bernardino County

REVISED

- 09/30/14 RU
- 06/04/15 GW
- 01/28/16 GW
- 05/13/19 RU