

THIS MAP IS FOR THE PURPOSE OF AD VALOREM TAXATION ONLY.



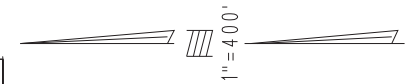
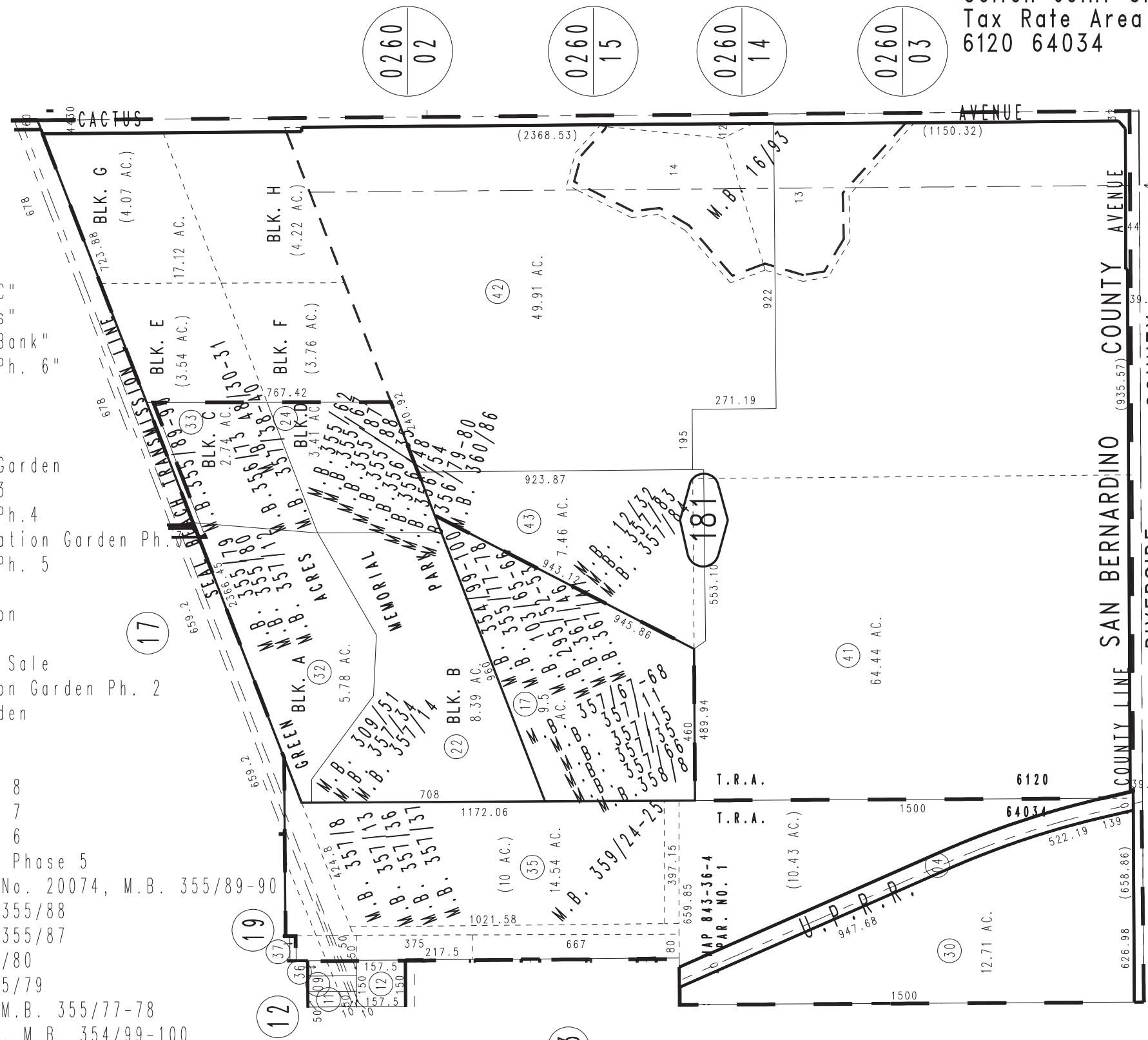
Ptn. Sec.34, T.1S.,R.5W., S.B.B.&M.

City of Rialto
Colton Joint Unified
Tax Rate Area
6120 64034

0259-18

- Tract No. 20639, M.B. 367/47, "Guadalupe Lot Garden"
- Tract No. 20638, M.B. 367/46, "Juan Diego Lots & DDLC"
- Tract No. 20469, M.B. 360/86, "Lakeview Monument Lots"
- Tract No. 20405, M.B. 359/24-25, "Holy Family Niche Bank"
- Tract No. 20181, M.B. 358/8, "Our Lady of Guadalupe Ph. 6"
- Tract No. 20187, M.B. 357/38-40, Lakeview 10
- Tract No. 20193, M.B. 357/84, Summit Estate
- Tract No. 20180, M.B. 357/83, Guadalupe Lot Garden
- Tract No. 20374, M.B. 357/12, Memory View Cremation Garden
- Tract No. 20177, M.B. 357/14, Our Lady of Guadalupe 3
- Tract No. 20178, M.B. 357/34, Our Lady of Guadalupe Ph.4
- Tract No. 20197, M.B. 357/67-68, Memory Terrace Cremation Garden Ph.
- Tract No. 20179, M.B. 357/66, Our Lady of Guadalupe Ph. 5
- Tract No. 20194, M.B. 357/35, Hedge Estates
- Tract No. 18844, M.B. 357/15, Memory Terrace Cremation
- Tract No. 20355, M.B. 357/11, Juan Diego DDLCs
- Tract No. 20367, M.B. 357/37, St. Elias Church Group Sale
- Tract No. 20195, M.B. 357/36, Memory Terrace Cremation Garden Ph. 2
- Tract No. 20196, M.B. 357/13, Memory Terrace Lot Garden
- Tract No. 20191, M.B. 357/8, Garden of Resurrection
- Tract No. 20075, M.B. 356/79-80, Lakeview 9

- Tract No. 20186, M.B. 356/73, Lakeview 8
- Tract No. 20185, M.B. 356/54, Lakeview 7
- Tract No. 20184, M.B. 356/48, Lakeview 6
- Tract No. 20183, M.B. 356/35, Lakeview Phase 5
- Guardian Angel Columbarium Niches Tr. No. 20074, M.B. 355/89-90
- Lakeview Garden 4 Tr. No. 20182, M.B. 355/88
- Lakeview Garden 3 Tr. No. 18843, M.B. 355/87
- Deseret Garden Tr. No. 20329, M.B. 355/80
- Apostles Garden Tr. No. 20328, M.B. 355/79
- Juan Diego Columbarium Tr. No. 20318, M.B. 355/77-78
- Eternal Serenity Estates Tr. No. 20192, M.B. 354/99-100
- Tract No. 18835, M.B. 335/67, "Lakeview Garden 2"
- Tract No. 18801, M.B. 334/62, "Lakeview Garden"
- Tract No. 17467, M.B. 309/51, "Our Lady of Guadalupe"
- Tract No. 16367, M.B. 295/52-53
- Green Acres Memorial Park, Tr. No. 3670, M.B. 48/30-31
- Ptn. Tr. No. 2, A.C. Armstrong Estate, M.B. 12/32
- Ptn. Blk. 5, Rivino Heights, M.B. 16/93
- Tract No. 7940, Garden of the Sermon on the Mount, M.B. 103/65-66



REVISED	
10/22/20	RU
03/05/21	GW
04/14/21	RU
07/21/21	RU
12/10/21	RU
04/03/24	RU