

THIS MAP IS FOR THE PURPOSE
OF AD VALOREM TAXATION ONLY.

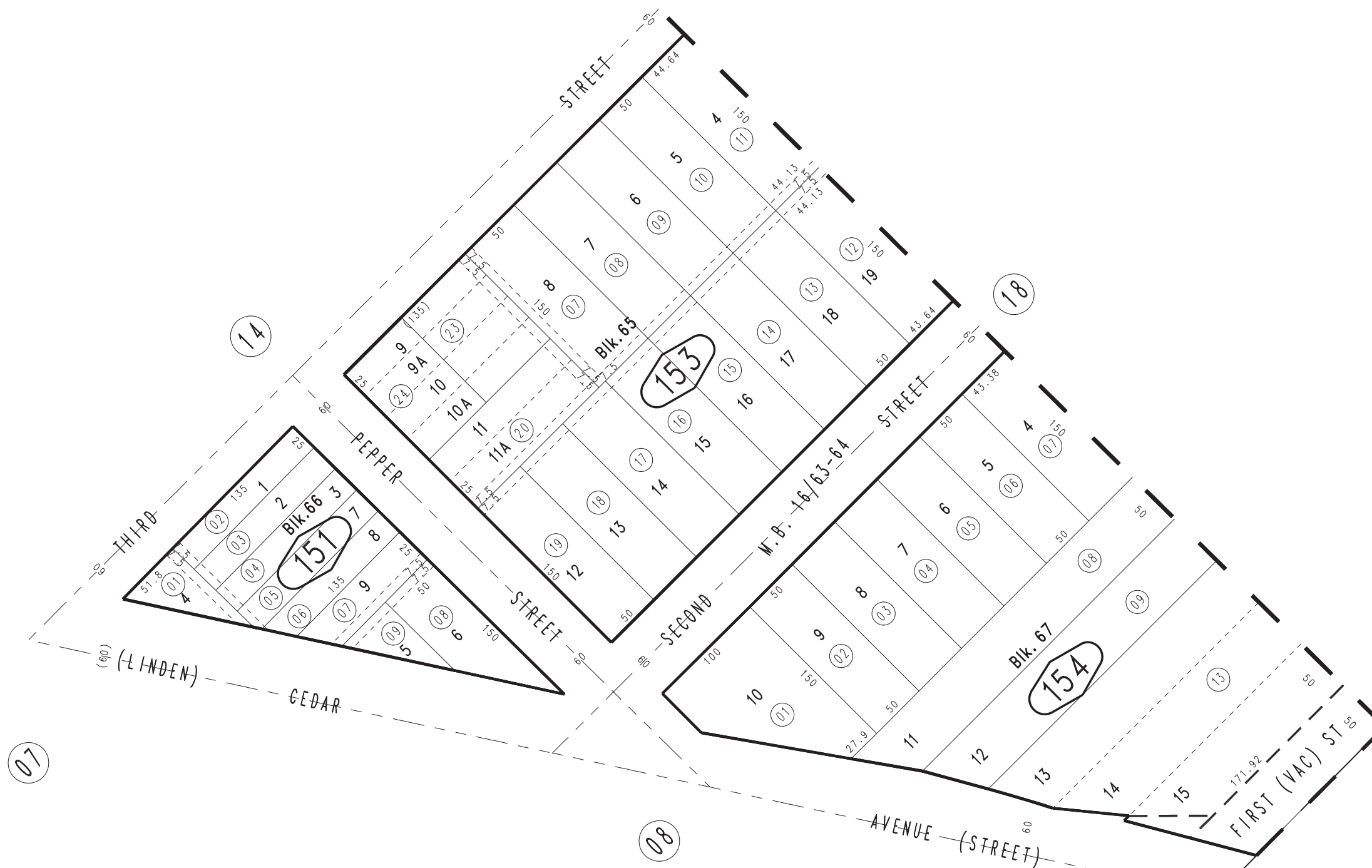


Ptn. Town of Crestmore
M.B. 16/63-64

Colton Joint Unified
Tax Rate Area
64040

0259-15

1" = 100'



SAN BERNARDINO COUNTY
RIVERSIDE COUNTY

Ptn. N.W. 1/4, Sec 34
T.1S., R.5W.

Assessor's Map
Book 0259 Page 15
San Bernardino County

REVISED